

LOC I-ELM	APP CRS	Rwy ldg	7799
109.1	242°	TDZE	955
		Apt Elev	955

ILS or LOC RWY 24

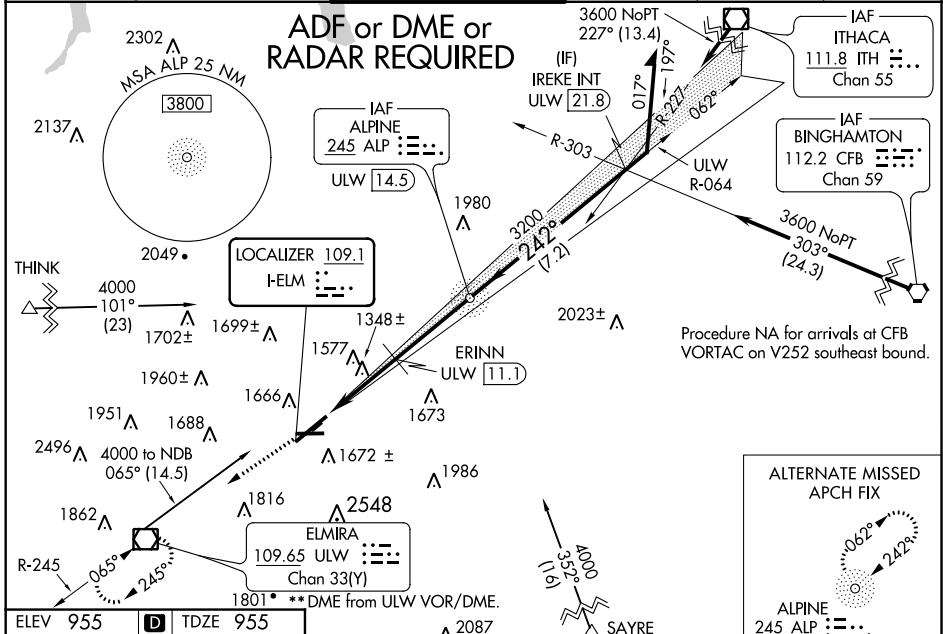
ELMIRA/CORNING RGNL (ELM)

⚠ For inoperative MALS, increase S-ILS Rwy 24 all Cats visibility to 1¼. When local altimeter setting not received, use Penn Yan altimeter setting and increase all DA 73 feet and all MDA 80 feet, and increase S-ILS 24 all Cats and ERINN fix minimums S-LOC 24 Cats C/D visibility ¼ mile and S-LOC 24 Cats A/C/D visibility ½ mile; inop table does not apply to S-LOC 24 Cats A/C/D; for inop MALS, increase S-ILS 24 # all Cats visibility to ¾ mile, increase S-ILS 24 all Cats visibility to 1½ mile. Circling Rwy 10 NA at night. #Missed approach requires a minimum climb of 260 feet per NM to 2300. #RVR 1800 authorized with use of FD or AP or HUD to DA, NA when using Penn Yan altimeter setting.

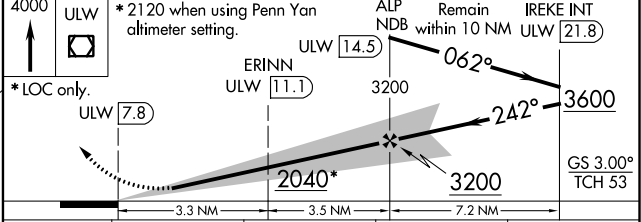
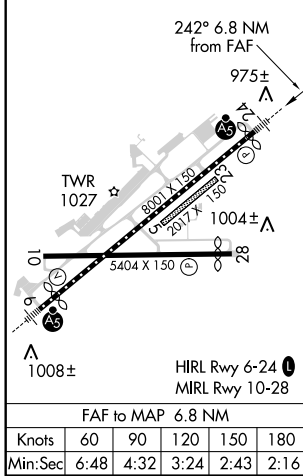
MALS

MISSED APPROACH:
 Climb to 4000 direct ULW VOR/DME and hold, continue climb-in-hold to 4000.

ATIS	ELMIRA APP CON *	ELMIRA TOWER *	GND CON	CLNC DEL	UNICOM
125.475	128.425 257.8	121.1 (CTAF) 0 257.8	121.9	121.9	122.95



ELEV 955	D	TDZE 955
----------	---	----------



CATEGORY	A	B	C	D
S-ILS 24 #		1155/24	200 (200-½)	
S-ILS 24		1346/45	391 (400-¾)	
S-LOC 24	2040/40 1085 (1100-¾)	2040/55 1085 (1100-1)	2040-2½	1085 (1100-2½)
CIRCLING	2100-1¼ 1145 (1200-1¼)	2100-1½ 1145 (1200-1½)	2120-3 1165 (1200-3)	2160-3 1205 (1300-3)
ERINN FIX MINIMUMS**				
S-LOC 24	1600/24	645 (700-½)	1600-1¾	645 (700-1¾)
CIRCLING	2100-1¼ 1145 (1200-1¼)	2100-1½ 1145 (1200-1½)	2120-3 1165 (1200-3)	2160-3 1205 (1300-3)

NE-2, 16 JUL 2020 to 13 AUG 2020

NE-2, 16 JUL 2020 to 13 AUG 2020