


WAAS CH <b>42827</b> <b>W06A</b>	APP CRS <b>062°</b>	Rwy ldg TDZE Apt Elev	<b>7401</b> <b>944</b> <b>955</b>
--	------------------------	-----------------------------	---

# RNAV (GPS) RWY 6

ELMIRA/CORNING RGNL (ELM)

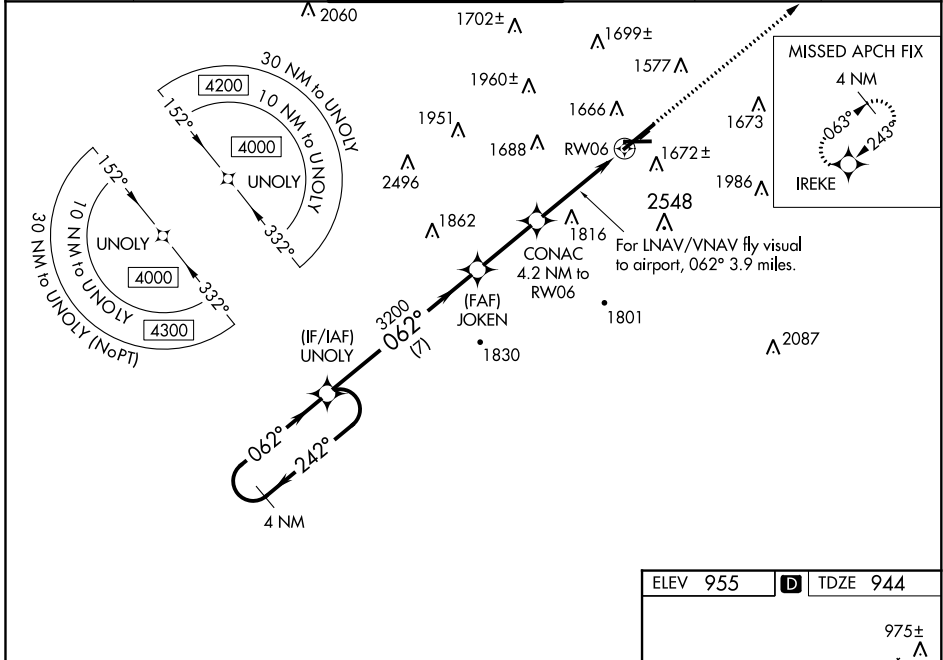
**⚠** Night landing: Rwy 10 NA. For uncompensated Baro-VNAV systems, LNAV/VNAV NA below -16°C (4°F) or above 37°C (98°F). DME/DME RNP-0.3 NA. When local altimeter setting not received, LNAV/VNAV NA. When local altimeter setting not received, use Penn Yan altimeter setting and increase LPV DA 73 feet and all MDA 80 feet, and increase LNAV Cats A/C/D visibility ½ mile; inop table does not apply to LNAV Cats A/C/D; for inop MALS, increase LPV all Cats visibility to ¾.

**⚠** -17°C

MALS 

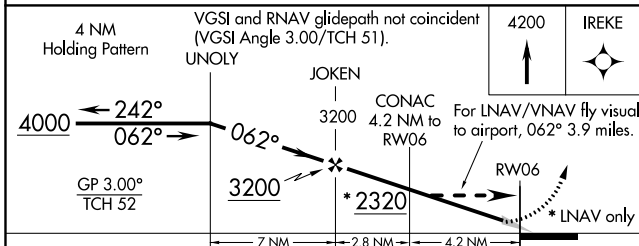
**MISSED APPROACH FIX:** Climb to 4200 direct IREKE and hold.

ATIS <b>125.475</b>	ELMIRA APP CON * <b>128.425 257.8</b>	ELMIRA TOWER * <b>121.1 (CTAF) 0 257.8</b>	GND CON <b>121.9</b>	CLNC DEL <b>121.9</b>	UNICOM <b>122.95</b>
------------------------	--	---	-------------------------	--------------------------	-------------------------



NE-2, 16 JUL 2020 to 13 AUG 2020

NE-2, 16 JUL 2020 to 13 AUG 2020



ELEV 955	<b>D</b> TDZE 944
----------	-------------------

TWR 1027, RWY 6 (5404 x 150), TAXIWAY 28 (800 x 150), 2017 X 150. Altitudes: 975±, 1004±, 1008±. Heading: 062° to RW06.

HIRL Rwy 6-24 **1**  
MIRL Rwy 10-28

CATEGORY	A	B	C	D
LPV DA		1144-½	200 (200-½)	
LNAV/VNAV DA		2234-3	1290 (1300-3)	
LNAV MDA	2040-¾ 1096 (1100-¾)	2040-1 1096 (1100-1)	2040-2½ 1096 (1100-2½)	
CIRCLING	2100-1¼ 1145 (1200-1¼)	2100-1½ 1145 (1200-1½)	2120-3 1165 (1200-3)	2160-3 1205 (1300-3)