

LOC/DME I-SXH 108.95 Chan 26(Y)	APP CRS 093°	Rwy Idg 10540 TDZE 669 Apt Elev 680
--	------------------------	--

ILS RWY 10C (SA CAT I)

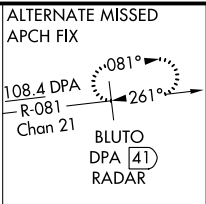
CHICAGO O'HARE INTL (ORD)

From GIBNS: RNAV-1 GPS required.
 RNAV 1-GPS or RADAR required for procedure entry. DME or RADAR required.
 Simultaneous approach authorized. Requires specific OPSPEC, MSPEC, or LOA approval and use of HUD to DH.

ALSF-2
 MISSED APPROACH: Climb to 4000 on heading 093° and CGT VORTAC R-336 to CGT VORTAC and hold.

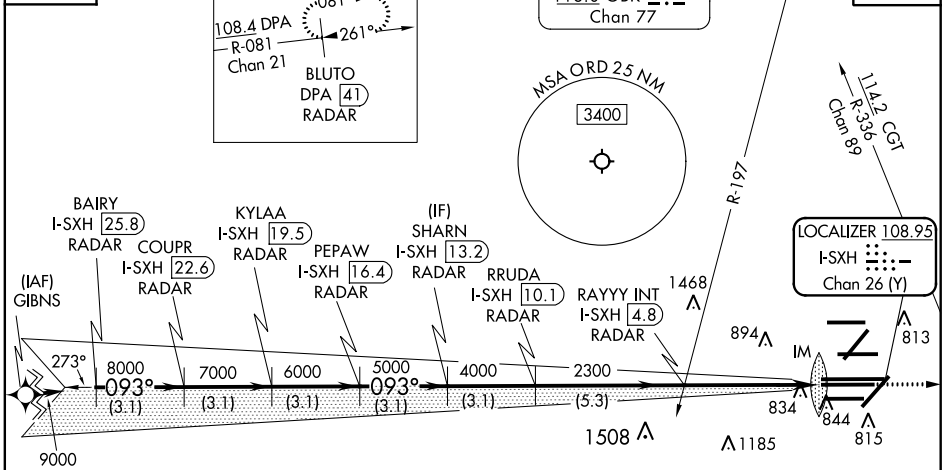
CHICAGO APP CON 119.0 292.125	O'HARE TOWERS 128.15 348.0 (Rwy 9L/27R) 133.0 348.0 (10R/28L) 126.9 132.7 348.0 (CENTER)	GND CON (TWR CENTER) 124.125 (TWR NORTH) 121.75 (OBND) 118.05 (TWR SOUTH) 121.9 (IBND) 226.675 (ALL TWRHS)	CLNC DEL 121.6
---	--	--	--------------------------

D-ATIS
135.4
282.225



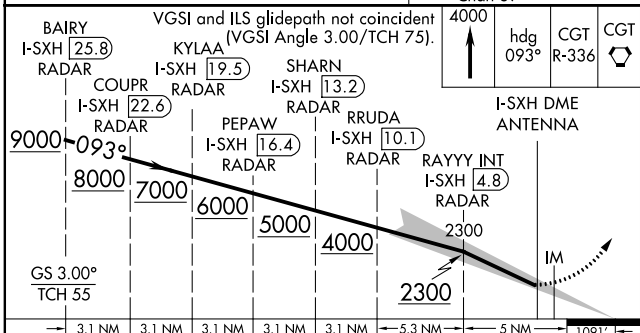
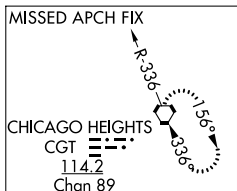
NORTHBROOK
113.0 OBK
Chan 77

CPDLC

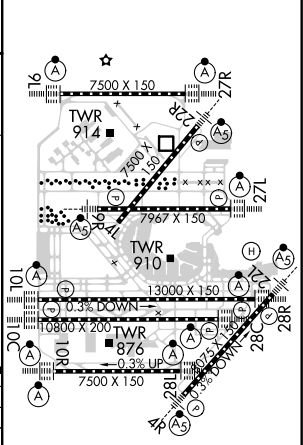


EC-3, 16 JUL 2020 to 13 AUG 2020

EC-3, 16 JUL 2020 to 13 AUG 2020



ELEV 680 TDZE 669



4000	hdg 093°	CGT R-336	CGT
9000	8000	7000	6000
5000	4000	2300	IM
3.1 NM	3.1 NM	3.1 NM	3.1 NM
5.3 NM	5 NM	1091'	
CATEGORY	A	B	C
5-ILS 10C	RA 148/14 150 DA 819		

SA CATEGORY I ILS - SPECIAL AIRCREW & AIRCRAFT CERTIFICATION REQUIRED

HIRL all Rwy's
 TDZ/CL all Rwy's except 4L