

| | | | |
|--|------------------------|-----------------------------|---|
| LOC/DME I-VQX 110.75 Chan 44(Y) | APP CRS 274° | Rwy ldg TDZE Apt Elev | 7500 667 680 |
|--|------------------------|-----------------------------|---|

ILS RWY 28L (SA CAT I)

CHICAGO O'HARE INTL (ORD)

From VOGLR: RNAV 1-GPS required.

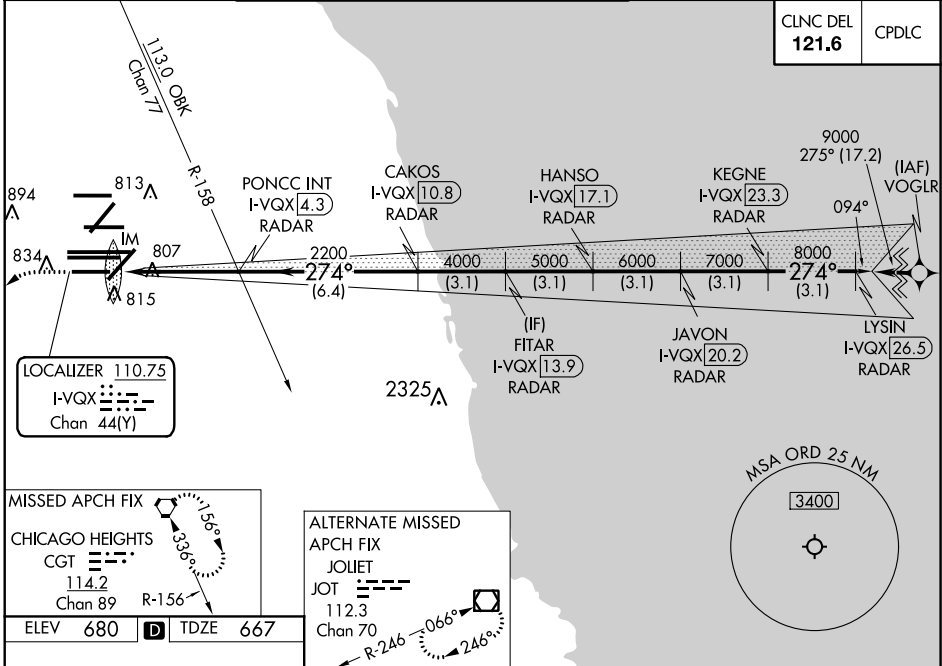
Aircraft not GPS equipped - RADAR required for procedure entry. DME or RADAR required.

ALSIF-2

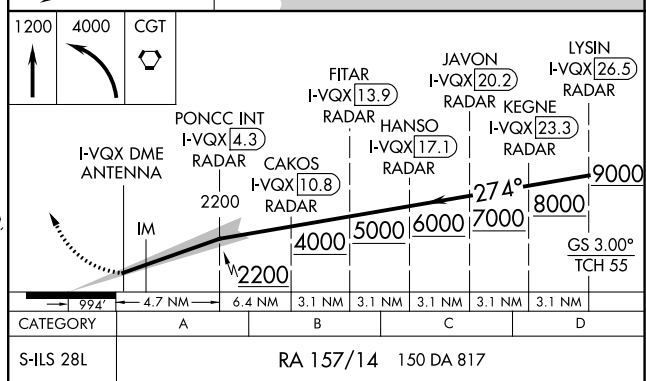
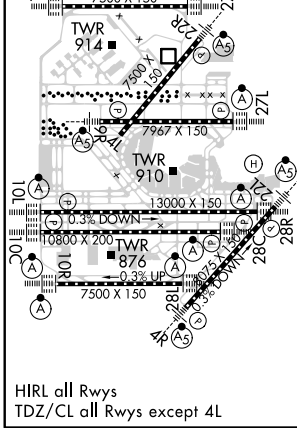
MISSED APPROACH: Climb to 1200 then climbing left turn to 4000 direct CGT VORTAC and hold.

Simultaneous approach authorized.
Requires specific OPSPEC, MSPEC, or LOA approval and use of HUD to DH.

| | | | | |
|------------------------|---|--|---------------------------------------|--------------------------------------|
| D-ATIS 135.4 | CHICAGO APP CON 119.0 292.125 | O'HARE TOWERS 128.15 348.0 (Rwy 9L/27R) 133.0 348.0 (10R/28L) | GND CON (TWR NORTH) 124.125 | (TWR CENTER) 121.75 (OBND) |
| 282.225 | 119.0 292.125 | 120.75 121.15 126.9 132.7 348.0 (CENTER) | 118.05 (TWR SOUTH) | 121.9 (IBND) |
| | | | 226.675 (ALL TWSRS) | |



| | | |
|-----------------|----------|-----------------|
| ELEV 680 | D | TDZE 667 |
|-----------------|----------|-----------------|



SA CATEGORY I ILS-SPECIAL AIRCREW & AIRCRAFT CERTIFICATION REQUIRED

EC-3, 16 JUL 2020 to 13 AUG 2020

EC-3, 16 JUL 2020 to 13 AUG 2020