

LOC/DME I-MED <b>111.1</b> Chan <b>48</b>	APP CRS <b>093°</b>	Rwy ldg <b>12246</b> TDZE <b>672</b> Apt Elev <b>680</b>
---	------------------------	--

# ILS or LOC RWY 10L

CHICAGO O'HARE INTL (ORD)

From GIBNS: RNAV-1 GPS required.  
 RNAV 1-GPS or RADAR required for procedure entry. DME or RADAR required.  
 Simultaneous approach authorized.

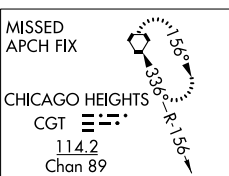
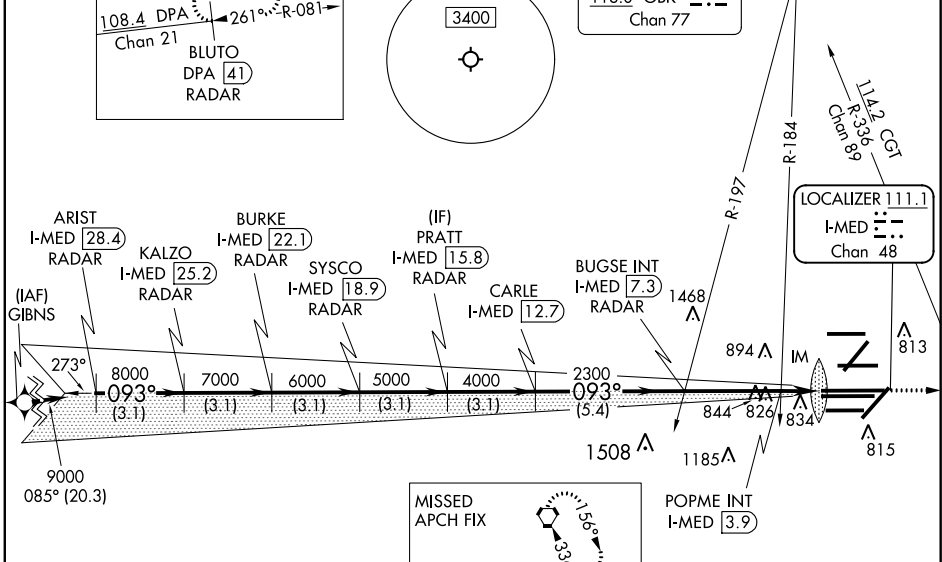
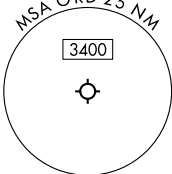
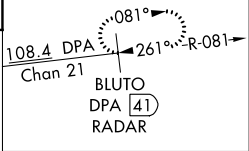
ALSF-2  
 MISSED APPROACH: Climb to 4000 on heading 093° and CGT VORTAC R-336 to CGT VORTAC and hold.

CHICAGO APP CON <b>119.0 292.125</b>	O'HARE TOWERS <b>128.15 348.0</b> (Rwy 9L/27R) <b>133.0 348.0</b> (10R/28L) <b>126.9 348.0</b> (CENTER)	GND CON (TWR CENTER) <b>124.125</b> (TWR NORTH) <b>118.05</b> (TWR SOUTH) <b>226.675</b> (ALL TWRs)	(TWR CENTER) <b>121.75</b> (OBND) <b>121.9</b> (IBND)	CLNC DEL <b>121.6</b>
---	--	--	---	--------------------------

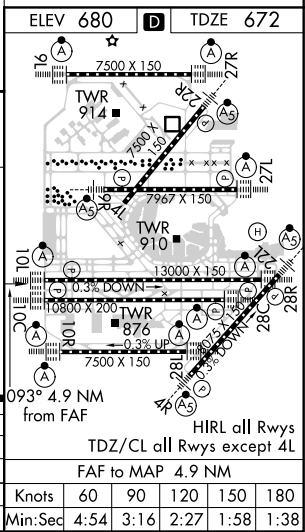
D-ATIS **135.4**  
**282.225**

ALTERNATE MISSED APCH FIX

CPDLC



ARIST I-MED [28.4] RADAR	BURKE I-MED [22.1] RADAR	PRATT I-MED [15.8] RADAR	BUGSE INT I-MED [7.3] RADAR	POPME INT I-MED [3.9] RADAR
KALZO I-MED [25.2] RADAR	SYSCO I-MED [18.9] RADAR	CARLE I-MED [12.7] RADAR		
9000	8000	7000	6000	5000
8000	7000	6000	5000	4000
3.1 NM	3.1 NM	3.1 NM	3.1 NM	3.1 NM
3.1 NM	3.1 NM	3.1 NM	5.4 NM	3.4 NM
1.4 NM	0.1 NM			
*LOC only.				
Hdg 093° CGT R-336				
GS 3.00° TCH 56				
2300 *1200				
IM				
CATEGORY A B C D				
S-ILS 10L 872/18 200 (200-½)				
S-LOC 10L 1200/24 528 (600-½) 1200/55 528 (600-1)				
POPME FIX MINIMUMS (DUAL VOR RECEIVERS OR DME REQUIRED)				
S-LOC 10L 1080/24 408 (400-½) 1080/40 408 (400-¾)				



EC-3, 16 JUL 2020 to 13 AUG 2020

EC-3, 16 JUL 2020 to 13 AUG 2020