

ILS or LOC RWY 22L

CHICAGO O'HARE INTL (ORD)

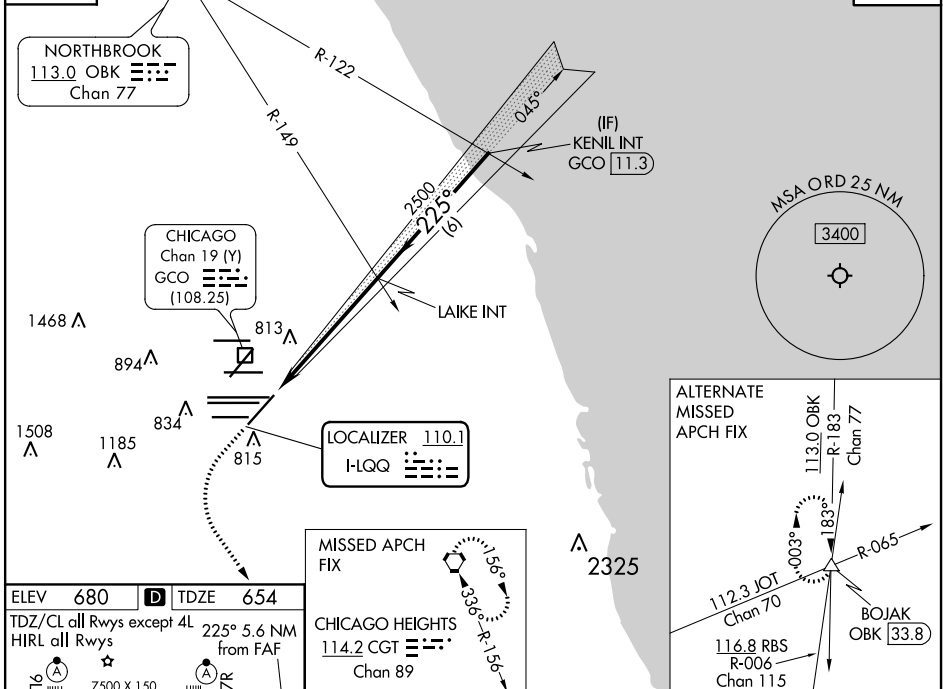
LOC I-LQQ	APP CRS	Rwy ldg TDZE	8075 654
110.1	225°	Apt Elev	680

RADAR required for procedure entry.		MALSR	MISSED APPROACH: Climb to 1100 then climbing left turn to 4000 direct CGT VORTAC.
Simultaneous approach authorized.			

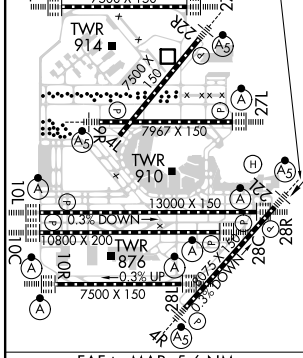
CHICAGO APP CON	O'HARE TOWERS	GND CON	(TWR CENTER)	CLNC DEL
119.0 292.125	128.15 348.0 (Rwy 9L/27R) 133.0 348.0 (110R/28L)	124.125 (TWR NORTH) 118.05 (TWR SOUTH) 226.675 (ALL TWRs)	121.75 (OBND) 121.9 (IBND)	121.6

D-ATIS
135.4
282.225

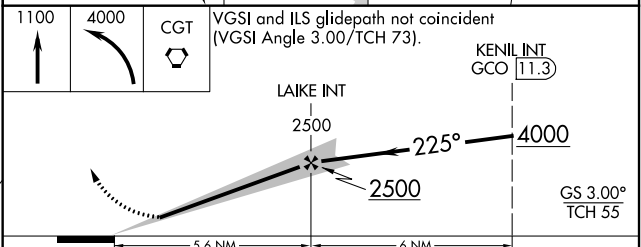
CPDLC



ELEV 680	TDZE 654
TDZ/Cl all Rwy's except 4L 225° 5.6 NM from FAF	
HIRL all Rwy's	



Knots	60	90	120	150	180
Min:Sec	5:36	3:44	2:48	2:14	1:52



CATEGORY	A	B	C	D
S-ILS 22L	854/18 200 (200-½)			
S-LOC 22L	1120/24	466 (500-½)	1120/50	466 (500-1)
CIRCLING	1220-1	540 (600-1)	1220-1½ 540 (600-½)	1460-2½ 780 (800-2½)

EC-3, 16 JUL 2020 to 13 AUG 2020

EC-3, 16 JUL 2020 to 13 AUG 2020