

| | | | |
|---------------------------|------------------------|---|------------------------|
| LOC I-RXZ 111.3 | APP CRS 223° | Rwy ldg TDZE 7375 652 | Apt Elev 680 |
|---------------------------|------------------------|---|------------------------|

ILS or LOC RWY 22R

CHICAGO O'HARE INTL (ORD)

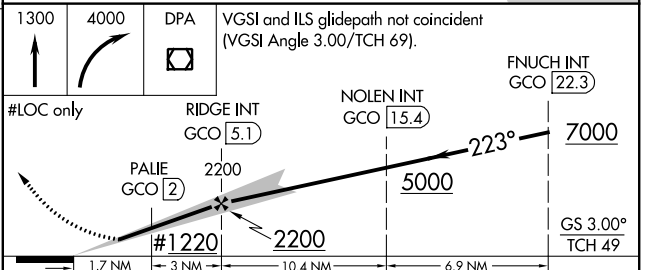
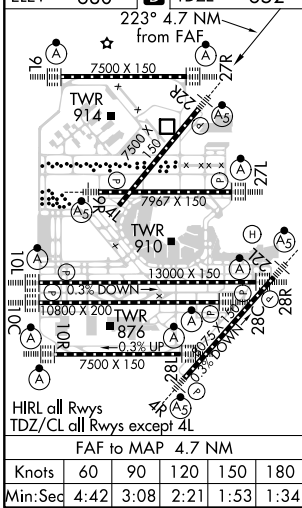
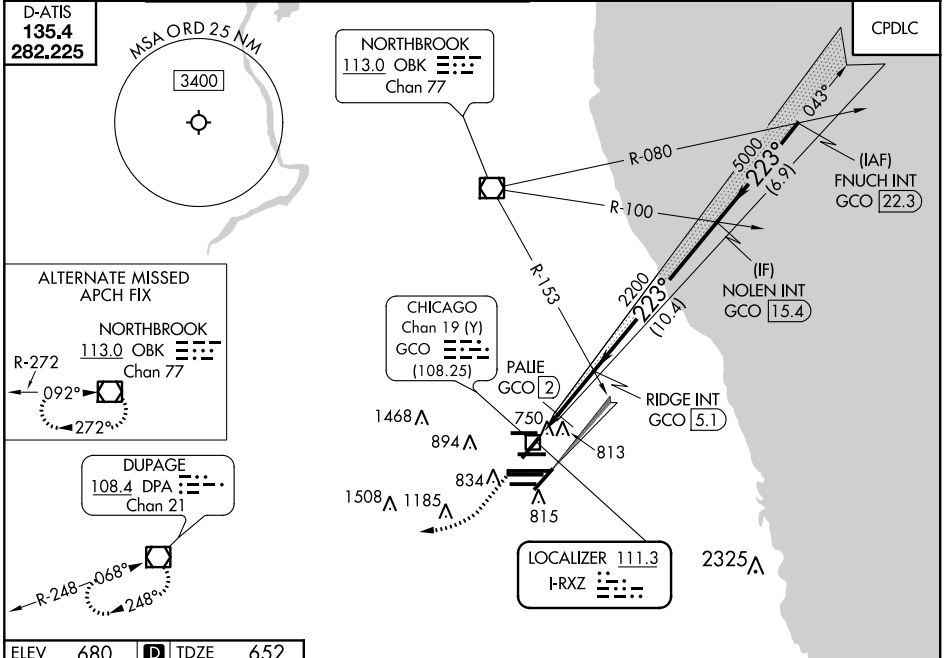
RADAR required for procedure entry.

Simultaneous approach authorized.
*DME from GCO DME.

MALSR

MISSED APPROACH: Climb to 1300 then climbing right turn to 4000 direct DPA VOR/DME and hold.

| | | | | |
|---|--|---|---|--------------------------|
| CHICAGO APP CON 119.0 292.125 | O'HARE TOWERS 128.15 348.0 (Rwy 9L/27R) 120.75 121.15 126.9 132.7 348.0 (CENTER) | GND CON (TWR NORTH) 124.125 (TWR SOUTH) 118.05 (ALL TWRs) 226.675 | (TWR CENTER) 121.75 (OBND) 121.9 (IBND) | CLNC DEL 121.6 |
|---|--|---|---|--------------------------|



| CATEGORY | DPA | | | |
|---------------------|--------------------|-------------|--------------|--------------|
| | A | B | C | D |
| S-ILS 22R | 852/18 200 (200-½) | | | |
| S-LOC 22R | 1220/24 | 568 (600-½) | 1220-1¼ | 568 (600-1¼) |
| C CIRCLING | 1220-1 | 540 (600-1) | 1220-1½ | 1460-2½ |
| *PALIE FIX MINIMUMS | | | | |
| S-LOC 22R | 980/24 | 328 (300-½) | 980/26 | 328 (300-½) |
| C CIRCLING | 1220-1 | 540 (600-1) | 1220-1½ | 1460-2½ |
| | | | 540 (600-1½) | 780 (800-2½) |

EC-3, 16 JUL 2020 to 13 AUG 2020

EC-3, 16 JUL 2020 to 13 AUG 2020