

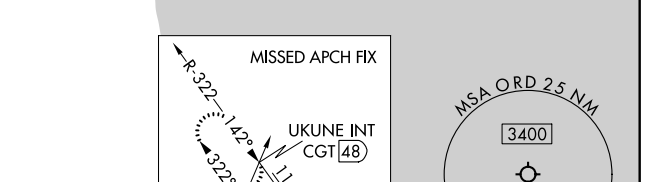
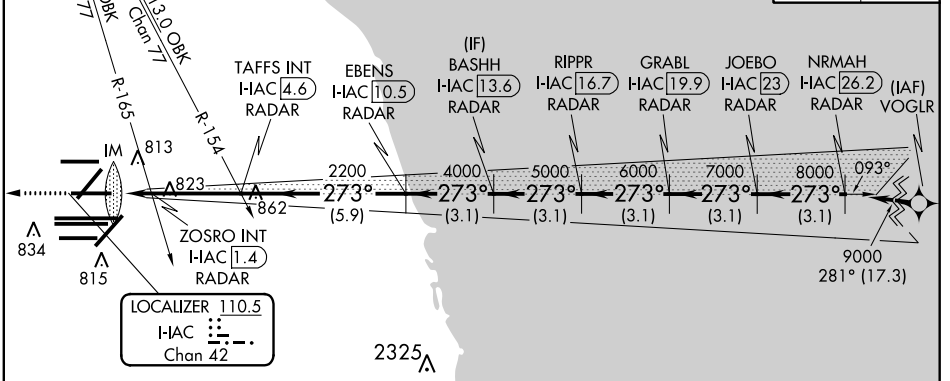
LOC/DME I-IAC 110.5 Chan 42	APP CRS 273°	Rwy ldg TDZE Apt Elev	7782 654 680
---	------------------------	-----------------------------	---

ILS or LOC RWY 27L

CHICAGO O'HARE INTL (ORD)

From VOGLR: RNAV 1-GPS required. Aircraft not GPS equipped - RADAR required for procedure entry. DME or RADAR required.	ALSF-2	MISSED APPROACH: Climb to 1200 then climbing right turn to 4000 on heading 295° and on CGT VORTAC R-322 to UKUNE INT/CGT 48 DME and hold.
Simultaneous approach authorized.		

D-ATIS 135.4 282.225	CHICAGO APP CON 119.0 292.125	O'HARE TOWERS 128.15 348.0 (Rwy 9L/27R) 133.0 348.0 (10R/28L) 120.75 121.15 126.9 132.7 348.0 (CENTER)	GND CON (TWR CENTER) 124.125 (TWR NORTH) 121.75 (OBND) 118.05 (TWR SOUTH) 121.9 (IBND) 226.675 (ALL TWS)
--	---	--	---



ELEV 680	TDZE 654
273° 4.7 NM from FAF	
HIRL all Rwys	
TDZ/CL all Rwys except 4L	
FAF to MAP 4.7 NM	
Knots	60 90 120 150 180
Min:Sec	4:42 3:08 2:21 1:53 1:34

1200	4000	CGT R-322	UKUNE INT	VGSI and ILS glidepath not coincident (VGSI Angle 3.00/TCH 67).
hdg 295°				
*LOC only	TAFS INT I-HAC 4.6	EBENS I-HAC 10.5	RIPPR I-HAC 16.7	NRMAH I-HAC 26.2
I-IAC DME ANTENNA	ZOSRO INT I-HAC 1.4		GRABL I-HAC 19.9	JOEBO I-HAC 23
I-HAC 0.1				
	2200	4000	5000	6000
		273°	273°	273°
		8000	7000	9000
				GS 3.00° TCH 55
	0.1	1.4	3.2 NM	-5.9 NM
			3.1 NM	3.1 NM
			3.1 NM	3.1 NM
			3.1 NM	3.1 NM
			3.1 NM	3.1 NM
CATEGORY	A	B	C	D
S-ILS 27L	854/18 200 (200-½)			
S-LOC 27L	1160/24	506 (500-½)	1160/55	506 (500-1)
ZOSRO FIX MINIMUMS (DUAL VOR RECEIVERS OR DME REQUIRED)				
S-LOC 27L	1080/24	426 (400-½)	1080/40	426 (400-¾)

EC-3, 16 JUL 2020 to 13 AUG 2020

EC-3, 16 JUL 2020 to 13 AUG 2020