

LOC/DME I-VZE <b>108.95</b> Chan 26 (Y)	APP CRS <b>273°</b>	Rwy ldg <b>10800</b> TDZE <b>651</b> Apt Elev <b>680</b>
---	------------------------	--

# ILS or LOC RWY 28C

CHICAGO O'HARE INTL (ORD)

From VOGLR: RNAV 1-GPS required.  
Aircraft not GPS equipped - RADAR required for procedure entry.  
DME or RADAR required.

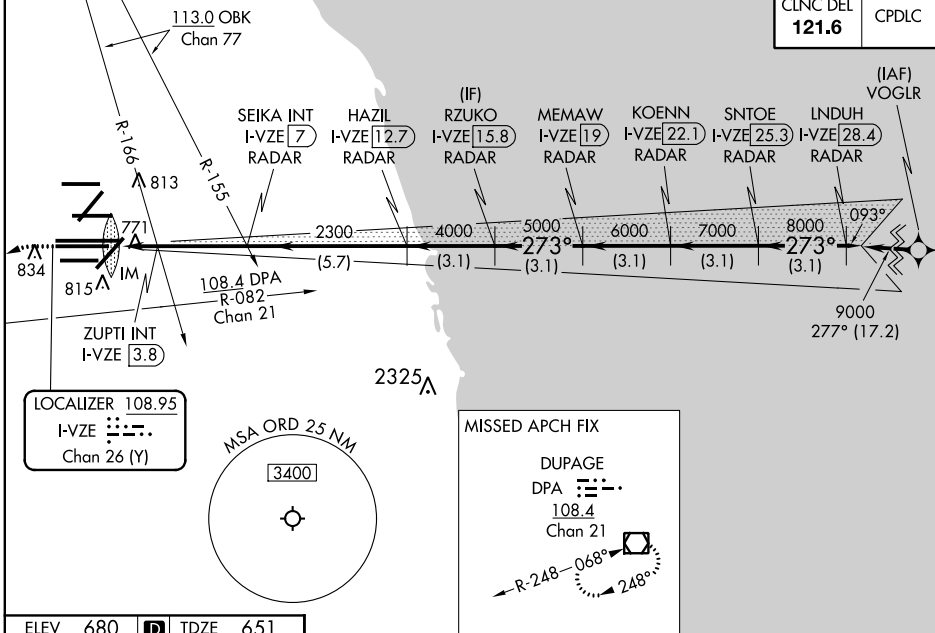


MISSED APPROACH: Climb to 1100 then climbing left turn to 4000 on heading 215° and DPA VOR/DME R-082 to DPA VOR/DME and hold.

Simultaneous approach authorized.

D-ATIS <b>135.4</b> <b>282.225</b>	CHICAGO APP CON <b>119.0 292.125</b>	O'HARE TOWERS <b>128.15 348.0</b> (Rwy 9L/27R) <b>133.0 348.0</b> (10R/28L) <b>120.75 121.15 126.9 132.7 348.0</b> (CENTER)	GND CON (TWR CENTER) <b>121.75</b> (OBND) (TWR NORTH) <b>118.05</b> (TWR SOUTH) <b>121.9</b> (IBND) <b>226.675</b> (ALL TWRs)
--	---	--	---

CLNC DEL <b>121.6</b>	CPDLC
--------------------------	-------



ELEV <b>680</b>	TDZE <b>651</b>
-----------------	-----------------

Obstacle chart details:   
 - Towers: TWR 914, TWR 910, TWR 876.   
 - Altitudes: 7500 X 150, 7800 X 150, 7967 X 150, 13000 X 150, 10800 X 200, 7500 X 150.   
 - HIRL all Rwws TDZ/CL all Rwws except 4L.   
 - FAF to MAP 5 NM.   
 - Knots: 60, 90, 120, 150, 180.   
 - Min:Sec: 5:00, 3:20, 2:30, 2:00, 1:40.

1100	4000	DPA R-082	DPA	RZUKO I-VZE 15.8 RADAR	KOENN I-VZE 22.1 RADAR	LNDUH I-VZE 28.4 RADAR		
*LOC only.				SEIKA INT I-VZE 7 RADAR	MEMAW I-VZE 19 RADAR	SNTOE I-VZE 25.3 RADAR		
I-VZE 2	ZUPTI INT I-VZE 3.8	HAZIL I-VZE 12.7 RADAR	2300	5000	6000	7000	8000	9000
IM	*I-VZE 2.9	*I-VZE 1200	2300	4000	5000	6000	7000	8000
VGS1 and ILS glidepath not coincident (VGS1 Angle 3.00/TCH 80).								
CATEGORY		A	B	C	D			
S-ILS 28C		851/18			200 (200-½)			
S-LOC 28C		1200/24	549 (600-½)		1200/60	549 (600-1¼)		
ZUPTI FIX MINIMUMS (DUAL VOR RECEIVERS OR DME REQUIRED)								
S-LOC 28C		1040/24	389 (400-½)		1040/35	389 (400-¾)		

EC-3, 16 JUL 2020 to 13 AUG 2020

EC-3, 16 JUL 2020 to 13 AUG 2020