

LOC I-FJU	APP CRS	Rwy ldg	<b>8075</b>
<b>110.1</b>	<b>045°</b>	TDZE	<b>661</b>
		Apt Elev	<b>680</b>

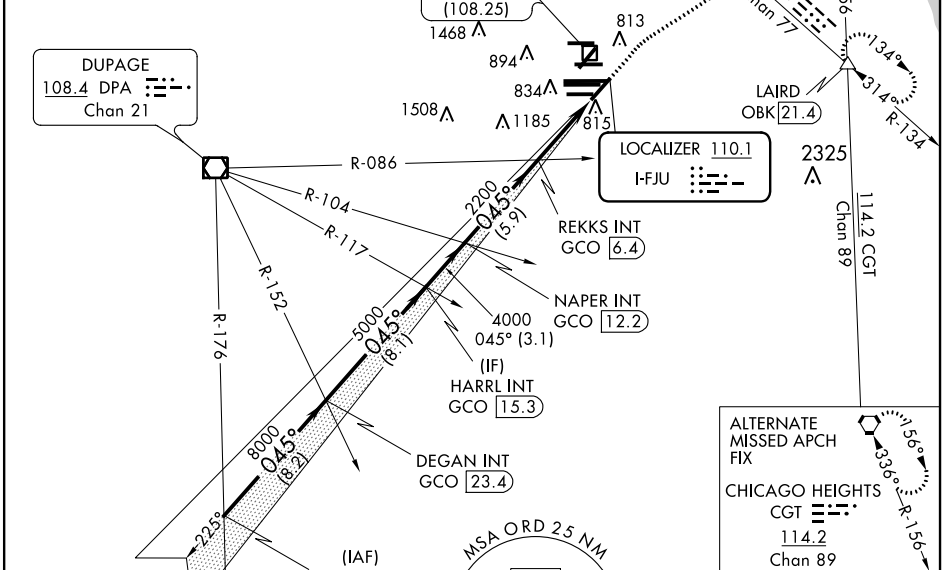
# ILS or LOC RWY 4R

CHICAGO O'HARE INTL (ORD)

RADAR required for procedure entry.		MALSR	MISSED APPROACH: Climb to 1200 then climbing right turn to 4000 on heading 060° and OBK VOR/DME R-134 to LAIRD INT/OBK 21.4 DME and hold.
Simultaneous approach authorized.			

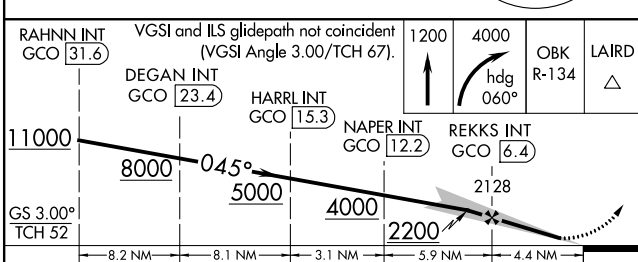
CHICAGO APP CON	O'HARE TOWERS	GND CON (TWR CENTER)	CLNC DEL
<b>119.0 292.125</b>	<b>128.15 348.0</b> (Rwy 9L/27R) <b>133.0 348.0</b> (10R/28L) <b>348.0</b> (CENTER)	<b>124.125</b> (TWR NORTH) <b>118.05</b> (TWR SOUTH) <b>226.675</b> (ALL TWRs)	<b>121.75</b> (OBND) <b>121.9</b> (IBND) <b>121.6</b>

D-ATIS
<b>135.4</b>
<b>282.225</b>



ALTERNATE MISSED APCH FIX

CHICAGO HEIGHTS CGT 114.2 Chan 89



ELEV 680	D	TDZE 661
----------	---	----------

HRL all Rwy's TDZ/CL all Rwy's except 4L FAF to MAP 4.4 NM

Knots	60	90	120	150	180
Min:Sec	4:24	2:56	2:12	1:46	1:28

CATEGORY	A	B	C	D
S-ILS 4R	861/18		200 (200-½)	
S-LOC 4R	1160/24 499 (500-½)		1160/50 499 (500-1)	
CIRCLING	1220-1 540 (600-1)		1220-1½ 540 (600-1½) 1460-2½ 780 (800-2½)	

EC-3, 16 JUL 2020 to 13 AUG 2020

EC-3, 16 JUL 2020 to 13 AUG 2020