

ILS PRM RWY 10C (CLOSE PARALLEL) CHICAGO O'HARE INTL (ORD)

| | | |
|--|------------------------|--|
| LOC/DME I-SXH 108.95 Chan 26(Y) | APP CRS 093° | Rwy Idg 10540 TDZE 669 Apt Elev 680 |
|--|------------------------|--|

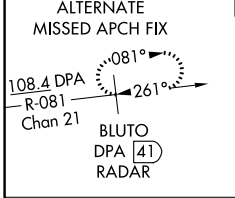
RNAV 1-GPS or RADAR required for procedure entry. DME or RADAR required.
From GIBNS: RNAV-1 GPS required.

Simultaneous approach authorized.
Use of FD or AP required during simultaneous operations.
Dual VHF comm required. See additional requirements on AAUP.

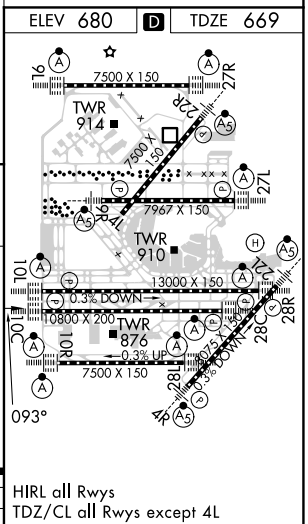
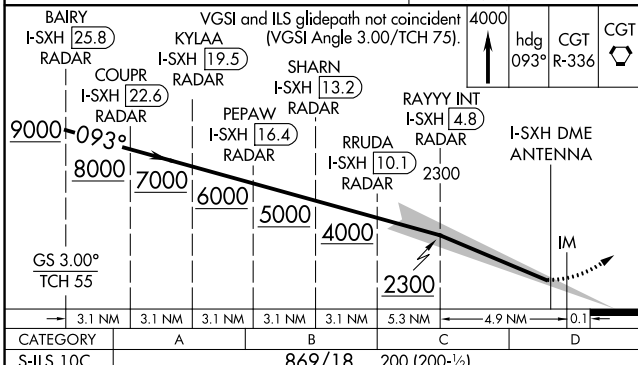
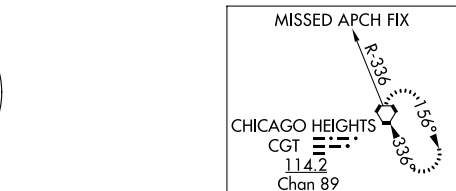
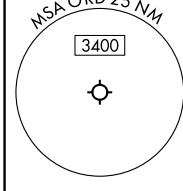
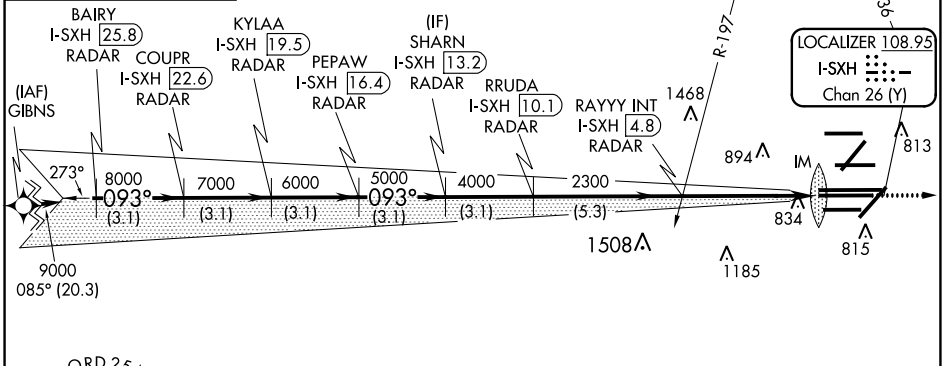
ALSF-2

MISSED APPROACH: Climb to 4000 on heading 093° and CGT VORTAC R-336 to CGT VORTAC and hold.

| | | | | |
|--|---|---|--|---|
| D-ATIS 135.4 282.225 | CHICAGO APP CON 119.0 292.125 | O'HARE TOWERS 128.15 348.0 (Rwy 9L/27R) 133.0 348.0 (10R/28L) 120.75 121.15 126.9 132.7 348.0 (CENTER) PRM 119.625 | GND CON (TWR CENTER) (TWR NORTH) (TWR SOUTH) (ALL TWRs) 124.125 118.05 226.675 | (TWR CENTER) (OBND) (IBND) 121.75 121.9 |
|--|---|---|--|---|



| | |
|--------------------------|-------|
| CLNC DEL 121.6 | CPDLC |
|--------------------------|-------|



EC-3, 16 JUL 2020 to 13 AUG 2020

EC-3, 16 JUL 2020 to 13 AUG 2020