

ILS PRM RWY 28C (CLOSE PARALLEL) CHICAGO O'HARE INTL (ORD)

| | | |
|--|------------------------|--|
| LOC/DME I-VZE 108.95 Chan 26 (Y) | APP CRS 273° | Rwy ldg 10800 TDZE 651 Apt Elev 680 |
|--|------------------------|--|

Aircraft not GPS equipped - RADAR required for procedure entry. DME or RADAR required.
From VOGLR: RNAV 1-GPS required.

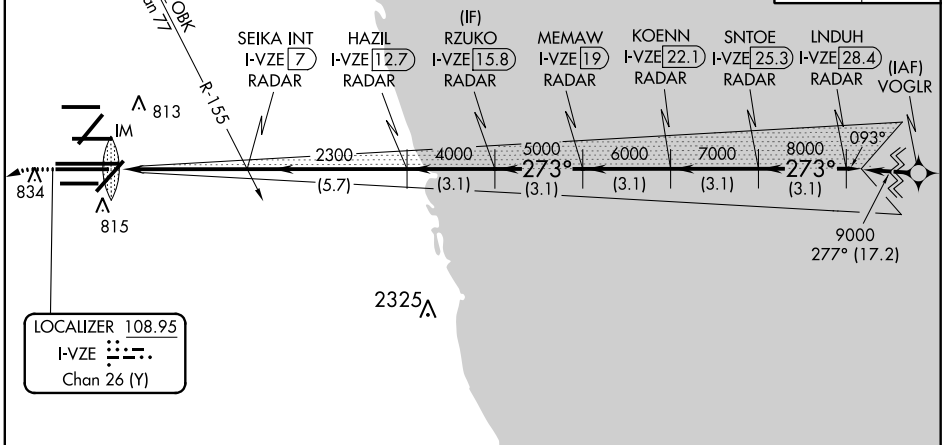
ALSIF-2

MISSED APPROACH: Climb to 1100 then climbing left turn to 4000 on heading 215° and DPA VOR/DME R-082 to DPA VOR/DME and hold.

Simultaneous approach authorized. Use of FD or AP required during simultaneous operations. Dual VHF comm required. See additional requirements on AAUP.

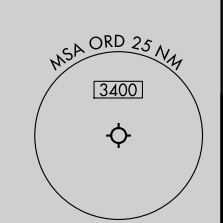
| | | | |
|--|---|---|---|
| D-ATIS 135.4 282.225 | CHICAGO APP CON 119.0 292.125 | O'HARE TOWERS 128.15 348.0 (Rwy 9L/27R) 133.0 348.0 (10R/28L) 120.75 121.15 126.9 132.7 348.0 (CENTER) PRM 119.625 | GND CON (TWR CENTER) (TWR NORTH) 121.75 (OBND) (TWR SOUTH) 121.9 (IBND) (ALL TWRs) 226.675 |
|--|---|---|---|

| | |
|--------------------------|-------|
| CLNC DEL 121.6 | CPDLC |
|--------------------------|-------|

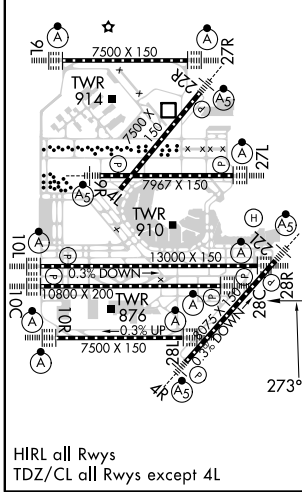


LOCALIZER 108.95
I-VZE
Chan 26 (Y)

MISSED APCH FIX
DUPAGE
DPA
108.4
Chan 21
R-248-068° 248°



| | | |
|----------|---|----------|
| ELEV 680 | D | TDZE 651 |
|----------|---|----------|



| | | | | | | | | | | |
|-----------|--------|-----------|---------------|---|------------------------|------------------------|--------|--------|--------|--------|
| 1100 | 4000 | DPA R-082 | DPA | RZUKO I-VZE 15.8 RADAR | KOENN I-VZE 22.1 RADAR | LNDUH I-VZE 28.4 RADAR | | | | |
| hdg 215° | | | | SEIKA INT I-VZE 7 RADAR | MEMAW I-VZE 19 RADAR | SNTOE I-VZE 25.3 RADAR | | | | |
| | | | | HAZIL I-VZE 12.7 RADAR | | | | | | |
| | | | | 2300 | 4000 | 5000 | 6000 | 7000 | 8000 | 9000 |
| | | | | 0.1 | 4.9 NM | 5.7 NM | 3.1 NM | 3.1 NM | 3.1 NM | 3.1 NM |
| | | | | VGSI and ILS glidepath not coincident (VGSI Angle 3.00/TCH 80). | | | | | | |
| | | | | GS 3.00° TCH 55 | | | | | | |
| CATEGORY | A | | B | | C | | D | | | |
| S-ILS 28C | 851/18 | | 200 (200-1/2) | | | | | | | |