

LOC/DME I-BYW <b>110.9</b> Chan 46	APP CRS <b>091°</b>	Rwy Idg TDZE <b>7500</b> <b>680</b> Apt Elev <b>680</b>
--	------------------------	--

# ILS PRM Y RWY 10R (CLOSE PARALLEL)

CHICAGO O'HARE INTL (ORD)

RNAV 1-GPS or RADAR required for procedure entry. DME or RADAR required.  
From GIBNS: RNAV-1 GPS required.

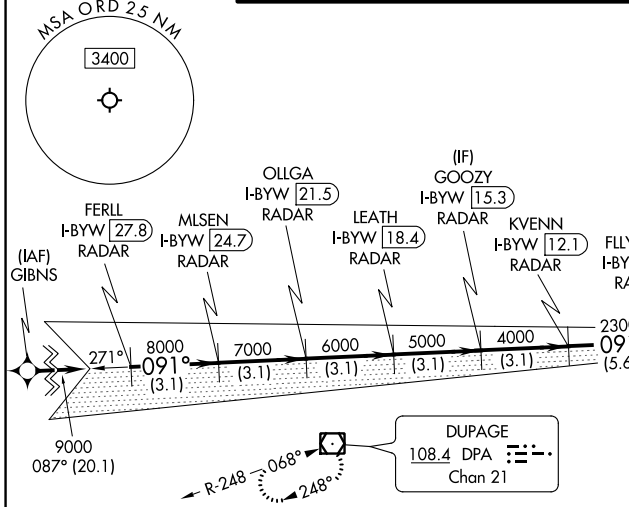
Simultaneous approach authorized. Use of FD or AP required during simultaneous operations. Dual VHF Comm requirements. See additional requirements on AAUP. Inop table does not apply to S-ILS 10R all Cats.  
Rwy 10R helicopter visibility reduction below 3/4 SM NA.

ALSF-2  
MISSED APPROACH: Climb to 1200 then climbing right turn to 4000 direct DPA VOR/DME and hold.

D-ATIS <b>135.4</b> <b>282.225</b>	CHICAGO APP CON <b>119.0 292.125</b>	O'HARE TOWERS <b>128.15 348.0</b> (Rwy 9L/27R) <b>133.0 348.0</b> (10R/28L) <b>120.75 121.15 126.9 132.7 348.0</b> (CENTER) <b>PRM 128.05</b>
--	---	--

GND CON (TWR CENTER) <b>124.125</b> (TWR NORTH) <b>121.75</b> (OBND) <b>118.05</b> (TWR SOUTH) <b>121.9</b> (IBND) <b>226.675</b> (ALL TWRs)
---

CLNC DEL <b>121.6</b>	CPDLC
--------------------------	-------



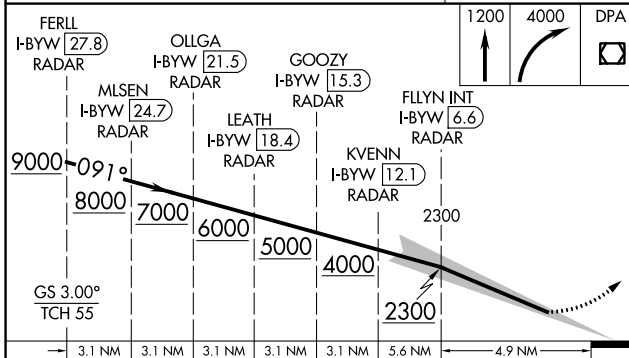
EC-3, 16 JUL 2020 to 13 AUG 2020

EC-3, 16 JUL 2020 to 13 AUG 2020

DUPAGE  
108.4 DPA  
Chan 21

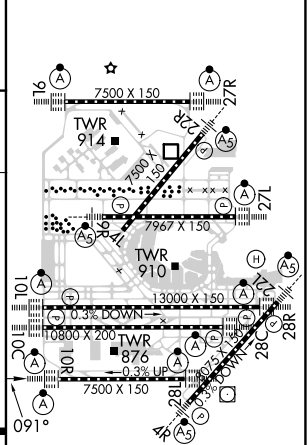
ALTERNATE MISSED  
APCH FIX  
JOLIET  
112.3  
Chan 70

LOCALIZER 110.9  
I-BYW  
Chan 46  
LOC offset 2.50°



1200	4000	DPA
↑	↘	□
CATEGORY A B C D		
S-ILS 10R 930-3/4 250 (300-3/4)		

ELEV 680	TDZE 680
----------	----------



HIRL all Rwys  
TDZ/CL all Rwys except 4L