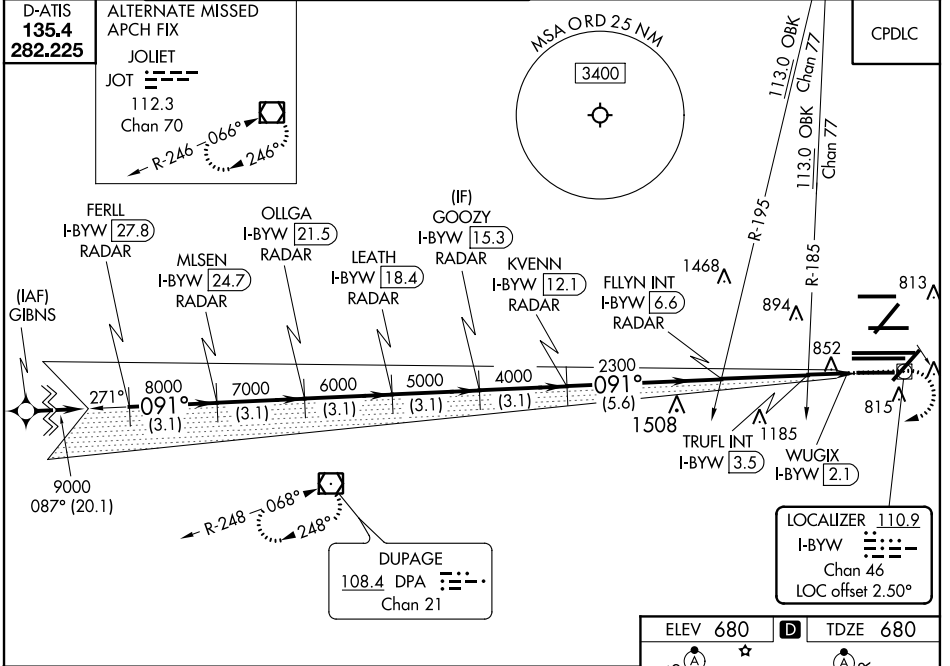


LOC/DME I-BYW <b>110.9</b> Chan 46	APP CRS <b>091°</b>	Rwy Idg 7500 TDZE 680 Apt Elev 680
--	------------------------	---

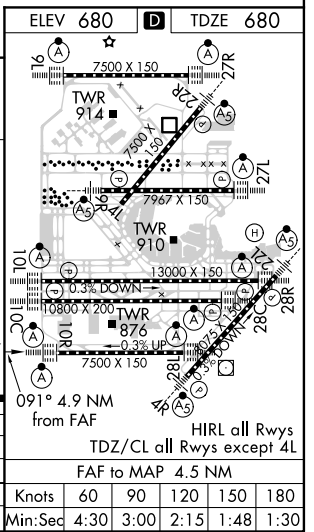
# ILS Y or LOC Y RWY 10R

CHICAGO O'HARE INTL (ORD)

RNAV 1-GPS or RADAR required for procedure entry. DME or RADAR required. From GIBNS: RNAV-1 GPS required.		ALSIF-2 	MISSED APPROACH: Climb to 1200 then climbing right turn to 4000 direct DPA VOR/DME and hold.
CHICAGO APP CON <b>119.0 292.125</b>		O'HARE TOWERS <b>128.15 348.0</b> (Rwy 9L/27R) <b>133.0 348.0</b> (10R/28L) <b>126.9 132.7 348.0</b> (CENTER)	GND CON (TWR CENTER) <b>121.75</b> (OBND) (TWR NORTH) <b>121.9</b> (IBND) (TWR SOUTH) <b>118.05</b> (ALL TWRS) <b>226.675</b>
D-ATIS <b>135.4</b> <b>282.225</b>		CLNC DEL <b>121.6</b>	



FERLL I-BYW RADAR [27.8]	OLLGA I-BYW RADAR [21.5]	GOOZY I-BYW RADAR [15.3]	FLYIN INT I-BYW RADAR [6.6]	WUGIX I-BYW RADAR [2.1]				
MLSN I-BYW RADAR [24.7]	LEATH I-BYW RADAR [18.4]	KVENN I-BYW RADAR [12.1]	TRUFL INT I-BYW RADAR [3.5]					
9000 091° 8000 7000 6000 5000 4000 2300 *1220								
GS 3.00° TCH 55								
3.1 NM 3.1 NM 3.1 NM 3.1 NM 3.1 NM 5.6 NM 3.1 NM 0.6 0.8 0.4								
CATEGORY	A		B		C		D	
S-ILS 10R	930-3/4		250 (300-3/4)		1220-1 540 (600-1)			
S-LOC 10R	1220-3/4		540 (600-3/4)		1220-1 540 (600-1)			
TRUFL FIX MINIMUMS (DUAL VOR RECEIVERS OR DME REQUIRED)								
S-LOC 10R	1120-3/4		440 (500-3/4)					



EC-3, 16 JUL 2020 to 13 AUG 2020

EC-3, 16 JUL 2020 to 13 AUG 2020