

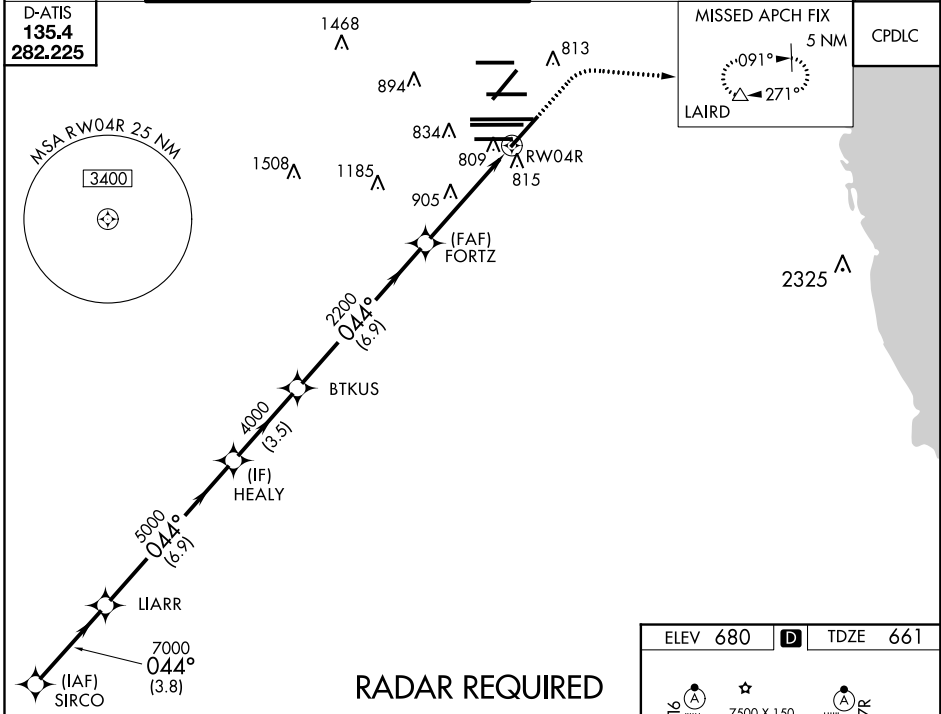
WAAS CH <b>81929</b> <b>W04A</b>	APP CRS <b>044°</b>	Rwy Idg <b>8075</b> TDZE <b>661</b> Apt Elev <b>680</b>
--	------------------------	---

# RNAV (GPS) RWY 4R

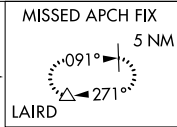
CHICAGO O'HARE INTL (ORD)

<p><b>▼</b> For uncompensated Baro-VNAV systems, LNAV/VNAV NA below -22°C (-7°F) or above 39°C (102°F). Simultaneous approach authorized with Rwy 4L. DME/DME RNP-0.3 NA. LNAV procedure NA during simultaneous operations. Use of FD or AP providing RNAV track guidance required during simultaneous operations.</p>	<p>MALSR</p>	<p>MISSED APPROACH: Climb to 1200 then climbing right turn to 4000 direct LAIRD and hold, continue climb-in-hold to 4000.</p>
--	--------------	---

CHICAGO APP CON <b>119.0 292.125</b>	O'HARE TOWERS <b>128.15 348.0</b> (Rwy 9L/27R) <b>133.0 348.0</b> (10R/28L) <b>120.75 121.15 126.9 132.7 348.0</b> (CENTER)	GND CON <b>124.125</b> (TWR NORTH) <b>118.05</b> (TWR SOUTH) <b>226.675</b> (ALL TWRs)	(TWR CENTER) <b>121.75</b> (OBND) <b>121.9</b> (IBND)	CLNC DEL <b>121.6</b>
---	--	---	---	--------------------------

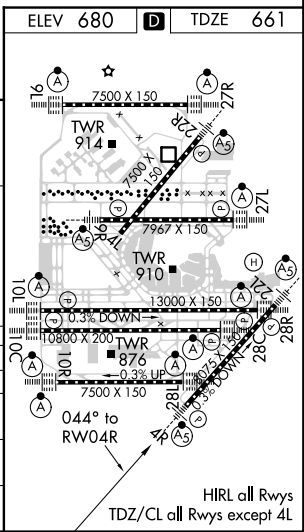
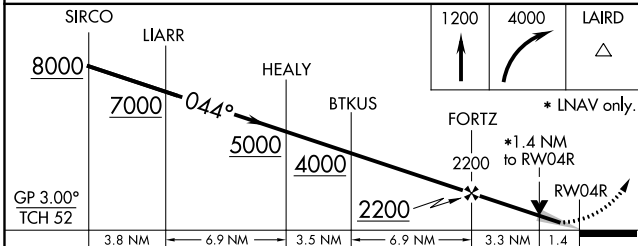


D-ATIS <b>135.4</b> <b>282.225</b>
--



CPDLC
-------

## RADAR REQUIRED



GP 3.00° TCH 52	3.8 NM	6.9 NM	3.5 NM	6.9 NM	3.3 NM	1.4
CATEGORY	A	B	C	D		
LPV DA		861/18	200 (200-½)			
LNAV/VNAV DA		990/32	329 (400-¾)			
LNAV MDA	1160/24	499 (500-½)	1160/50	499 (500-1)		
CIRCLING	1220-1	540 (600-1)	1220-1½ 540 (600-1½)	1460-2½ 780 (800-2½)		