

# RNAV (GPS) Y RWY 10R

CHICAGO O'HARE INTL (ORD)

WAAS CH <b>77937</b> <b>W10D</b>	APP CRS <b>090°</b>	Rwy Idg TDZE Apt Elev	<b>7500</b> <b>680</b> <b>680</b>
--	------------------------	-----------------------------	---

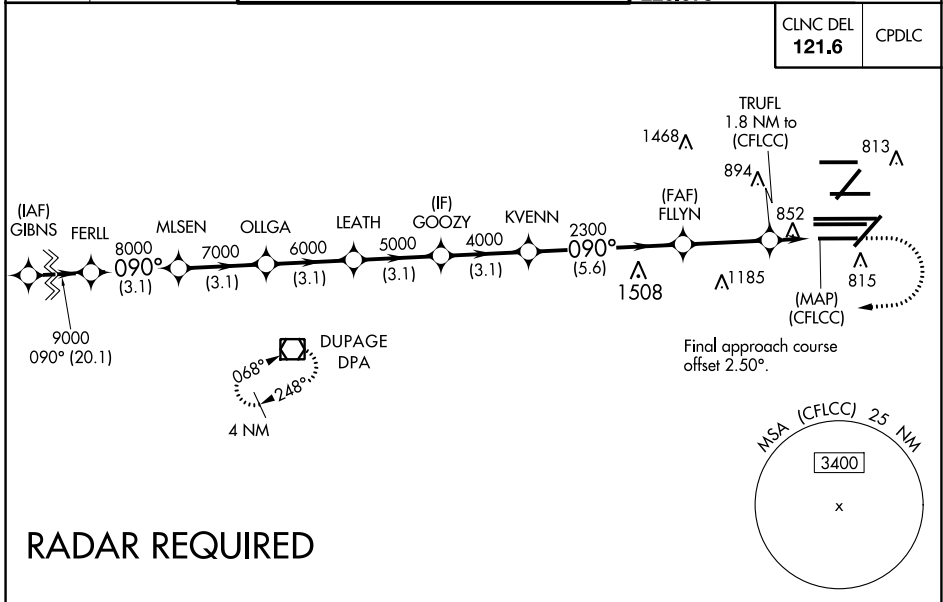
**▼** DME/DME RNP-0.3 NA. Simultaneous approach authorized. For uncompensated Baro-VNAV systems, LNAV/VNAV NA below -19°C (-2°F) or above 54°C (130°F). LNAV procedure NA during simultaneous operations. Use of FD or AP providing RNAV track guidance required during simultaneous operations. Inop table does not apply to LPV all Cats. For inop ALS, increase LNAV Cat A and B visibility to 1 SM. Rwy 10R helicopter visibility reduction below ¾ SM NA.

ALSF-2

MISSED APPROACH: Climb to 1200 then climbing right turn to 4000 direct DPA VOR/DME and hold.

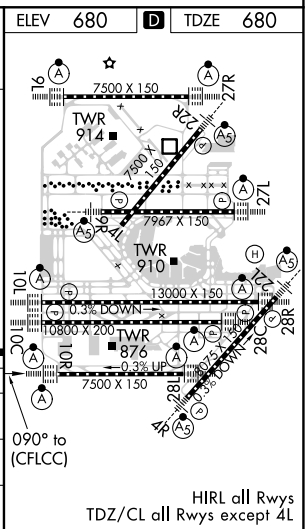
D-ATIS <b>135.4</b> <b>282.225</b>	CHICAGO APP CON <b>119.0 292.125</b>	O'HARE TOWERS <b>128.15 348.0</b> (Rwy 9L/27R) <b>133.0 348.0</b> (10R/28L) <b>120.75 121.15 126.9 132.7 348.0</b> (CENTER)				GND CON (TWR CENTER) <b>124.125</b> (TWR NORTH) <b>121.75</b> (OBND) <b>118.05</b> (TWR SOUTH) <b>121.9</b> (IBND) <b>226.675</b> (ALL TWRs)
--	---	---	--	--	--	---

CLNC DEL <b>121.6</b>	CPDLC
--------------------------	-------



**RADAR REQUIRED**

	1200	4000	DPA	ELEV 680	TDZE 680				
	*LNAV only.								
	9000	8000	7000	6000	5000	4000	2300	*1300	1.2
	GP 3.00								
	TCH 55								
		3.1 NM	3.1 NM	3.1 NM	3.1 NM	3.1 NM	5.6 NM	3.1 NM	0.6
CATEGORY	A	B		C		D			
LPV DA		930-¾		250 (300-¾)					
LNAV/VNAV DA		1157-1½		477 (500-1½)					
LNAV MDA		1120-¾		440 (500-¾)					



EC-3, 16 JUL 2020 to 13 AUG 2020

EC-3, 16 JUL 2020 to 13 AUG 2020