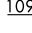
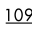


HENBY THREE ARRIVAL

GREENSBORO, NORTH CAROLINA

GREENSBORO APP CON
 124.35 269.225 (250°-049°)
 126.6 327.075 (050°-249°)
 GSO D-ATIS
 128.55
 INT ATIS
 121.3

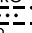
LYNCHBURG
 109.2 LYH 
 Chan 29
 N37°15.27' - W79°14.18'
 L-26-36, H-10-12

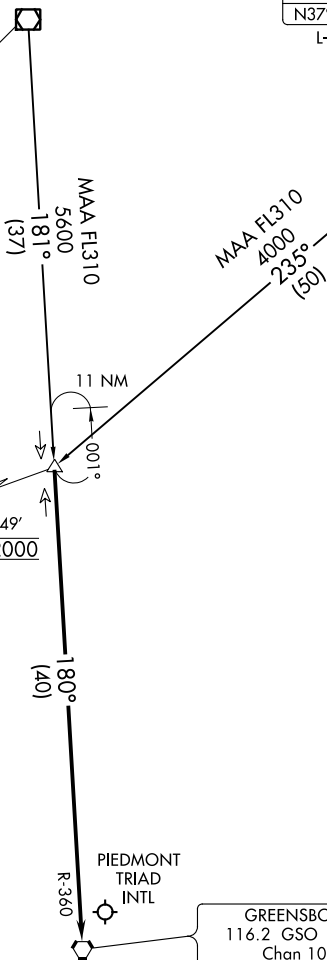
ROANOKE
 109.4 ROA 
 Chan 31
 N37°20.61' - W80°04.22'
 L-26, H-10-12

HENBY
 N36°43.17' - W80°01.49'
 Turbojets: Expect 12000

SMITH REYNOLDS 

PIEDMONT TRIAD INTL 

GREENSBORO
 116.2 GSO 
 Chan 109
 N36°02.74' - W79°58.58'



NOTE: DME required.

NOTE: Chart not to scale.

ARRIVAL ROUTE DESCRIPTION

LYNCHBURG TRANSITION (LYH.HENBY3): From over LYH VOR/DME on LYH R-235 to HENBY INT. Thence. . .

ROANOKE TRANSITION (ROA.HENBY3): From over ROA VOR/DME on ROA R-181 to HENBY INT. Thence. . .

. . . from over HENBY on GSO R-360 to GSO VORTAC, thence. . . expect RADAR vectors to final approach course.