

BAYYY THREE ARRIVAL (RNAV) Transition Routes

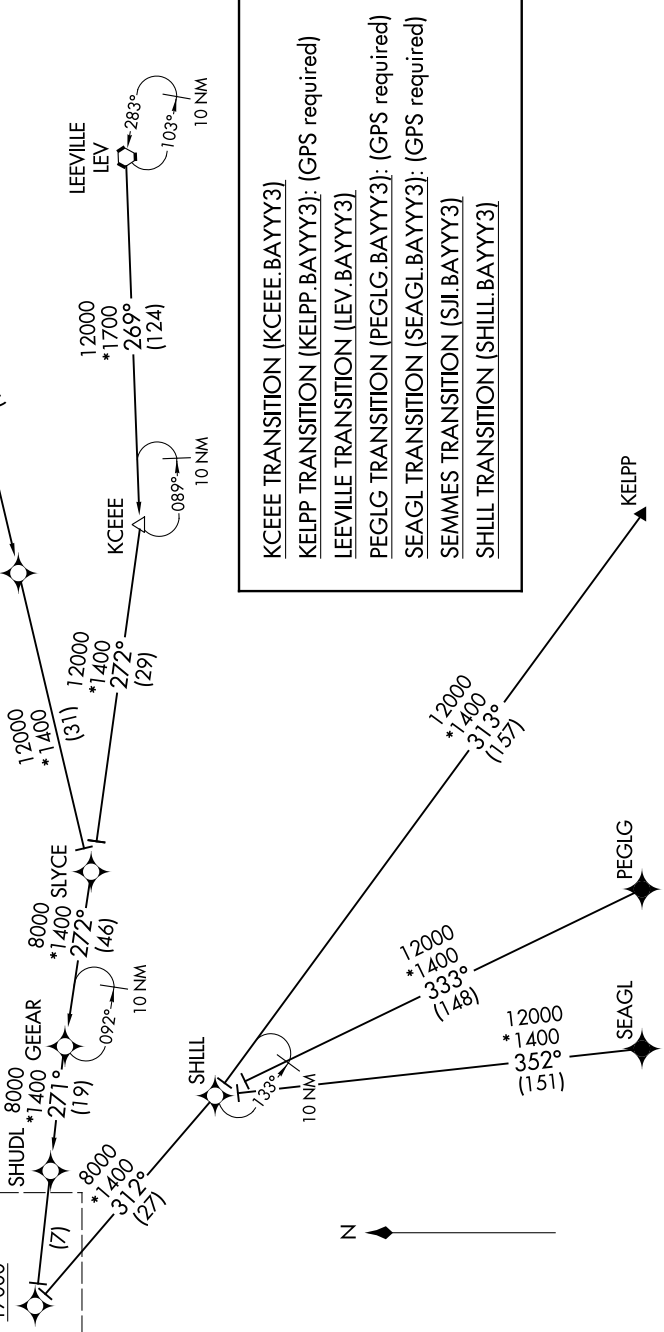
SC-5, 16 JUL 2020 to 13 AUG 2020

- NOTE: RADAR required.
- NOTE: RNAV 1.
- NOTE: DME/DME/IRU or GPS required.
- NOTE: Expect runway assignment from Houston TRACON upon initial contact.
- NOTE: For turbojet and turboprop aircraft capable of 280K or greater only.
- NOTE: Turbojet aircraft descend via Mach number until intercepting 280K.
- NOTE: Maintain 280K until slowed by the STAR.

HOUSTON_APP.CON
119.625 226.675
D-AIS
124.6

See following page
for Arrival Routes.
BAYYY

FL200 280K
17000



KCEEE TRANSITION (KCEEE.BAYYY3)
KELPP TRANSITION (KELPP.BAYYY3): (GPS required)
LEEVILLE TRANSITION (LEV.BAYYY3)
PEGLG TRANSITION (PEGLG.BAYYY3): (GPS required)
SEAGL TRANSITION (SEAGL.BAYYY3): (GPS required)
SEMMES TRANSITION (SJI.BAYYY3)
SHILL TRANSITION (SHILL.BAYYY3)

NOTE: Chart not to scale.

(CONTINUED ON FOLLOWING PAGE)

SC-5, 16 JUL 2020 to 13 AUG 2020