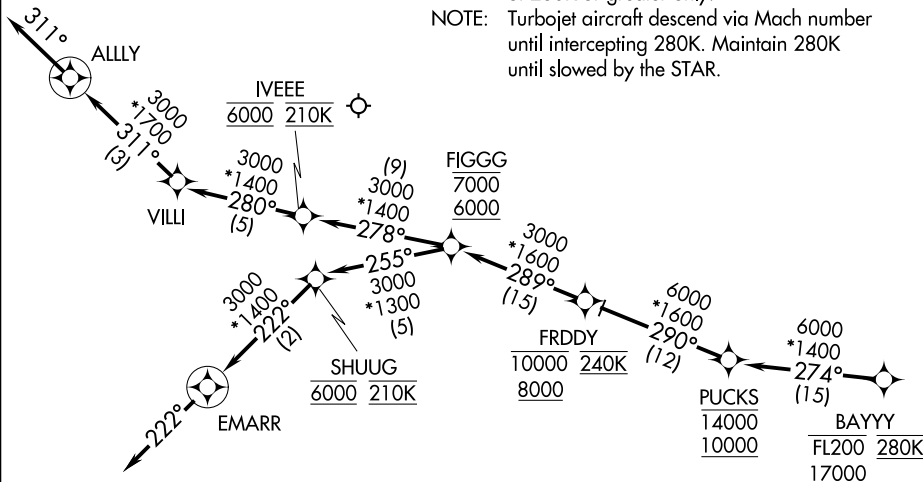


BAYYY THREE ARRIVAL (RNAV) Arrival Routes

HOUSTON, TEXAS

HOUSTON APP CON
119.625 226.675
D-ATIS
124.6

- NOTE: RADAR required.
- NOTE: RNAV 1.
- NOTE: DME/DME/IRU or GPS required.
- NOTE: Expect runway assignment from Houston TRACON upon initial contact.
- NOTE: For turbojet and turboprop aircraft capable of 280K or greater only.
- NOTE: Turbojet aircraft descend via Mach number until intercepting 280K. Maintain 280K until slowed by the STAR.



NOTE: Chart not to scale.

ARRIVAL ROUTE DESCRIPTION

From BAYYY on track 274° to cross PUCKS between 10000 and 14000.

LANDING RWY 4: From PUCKS on track 290° to cross FRDDY between 8000 and 10000 and at 240K, then on track 289° to cross FIGGG between 6000 and 7000, then on track 255° to cross SHUUG at 6000 and at 210K, then on track 222° to EMARR, then on track 222°. Expect vectors to final approach course.

LANDING RWYS 13L/R, 17: From PUCKS on track 290° to cross FRDDY between 8000 and 10000 and at 240K, then on track 289° to cross FIGGG between 6000 and 7000, then on track 278° to cross IVEEE at 6000 and at 210K, then on track 280° to VILLI, then on track 311° to ALLY, then on track 311°. Expect vectors to final approach course.

SC-5, 16 JUL 2020 to 13 AUG 2020

SC-5, 16 JUL 2020 to 13 AUG 2020