

BLTWY SIX DEPARTURE (RNAV)

**TOP ALTITUDE:
16000**

D-ATIS 124.6
CLNC DEL
125.45
CPDLC
GND CON
121.9
HOBBY TOWER
118.7 256.9
HOUSTON DEP CON
132.25 285.425

NOTE: RADAR required.
NOTE: DME/DME/IRU or GPS required.
NOTE: RNAV 1.

TAKEOFF MINIMUMS

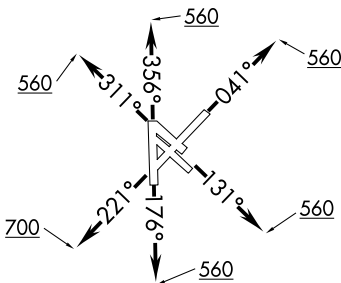
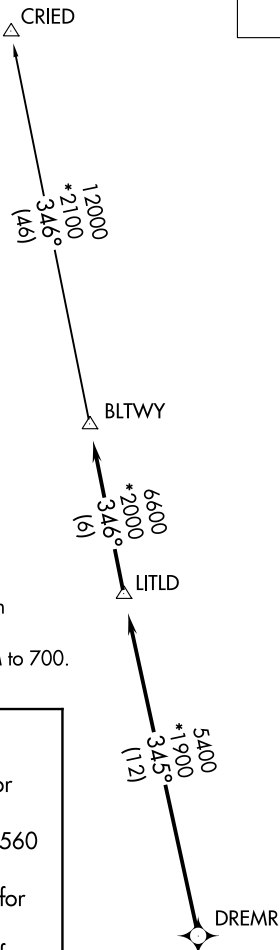
Rwys 4, 13L/R, 17, 31L/R, 35: Standard with minimum climb of 500' per NM to 560.
Rwy 22: Standard with minimum climb of 500' per NM to 700.

DEPARTURE ROUTE DESCRIPTION

TAKEOFF RWY 4: Climb heading 041° to 560 for RADAR vectors to DREMR, thence
TAKEOFF RWYS 13L/R: Climb heading 131° to 560 for RADAR vectors to DREMR, thence
TAKEOFF RWY 17: Climb heading 176° to 560 for RADAR vectors to DREMR, thence
TAKEOFF RWY 22: Climb heading 221° to 700 for RADAR vectors to DREMR, thence
TAKEOFF RWYS 31L/R: Climb heading 311° to 560 for RADAR vectors to DREMR, thence
TAKEOFF RWY 35: Climb heading 356° to 560 for RADAR vectors to DREMR, thence

. . . . on track 345° to LITLD, then on track 346° to BLTWY, then on (transition). Maintain 16000 or as assigned by ATC. Expect filed altitude 10 minutes after departure.

CRIED TRANSITION (BLTWY6.CRIED)



NOTE: Chart not to scale.

SC-5, 16 JUL 2020 to 13 AUG 2020

SC-5, 16 JUL 2020 to 13 AUG 2020

BLTWY SIX DEPARTURE (RNAV)

(BLTWY6.BLTWY) 25APR19