

HOODO SIX DEPARTURE (RNAV)

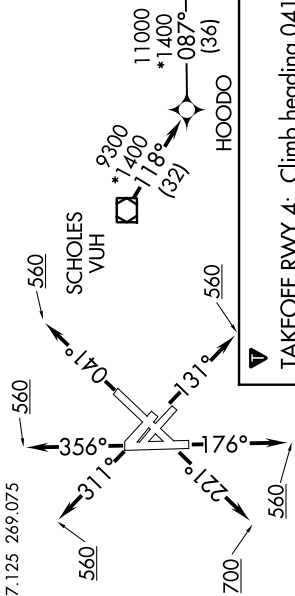
SC-5, 16 JUL 2020 to 13 AUG 2020

TOP ALTITUDE:
16000

TAKEOFF MINIMUMS
 Rwy 4, 13L/R, 17, 31L/R, 35: Standard with minimum climb of 500' per NM to 560.
 Rwy 22: Standard with minimum climb of 500' per NM to 700.

- NOTE: RNAV 1.
- NOTE: RADAR required.
- NOTE: ATC assigned only.
- NOTE: DME/DME/IRU or GPS required.
- NOTE: For non-GPS equipped aircraft, LCH, ILA, TBD, and LEV DME's must be operational.

D-ATIS 124.6
 CLNC DEL 125.45
 CPDLC
 GND CON
 121.9
 HOBBY TOWER 118.7 256.9
 HOUSTON DEP CON 127.125 269.075



DEPARTURE ROUTE DESCRIPTION

- TAKEOFF RWY 4:** Climb heading 041° to 560, for RADAR vectors to VUH VOR/DME, thence
- TAKEOFF RWYS 13L/R:** Climb on heading 131° to 560, for RADAR vectors to VUH VOR/DME, thence
- TAKEOFF RWY 17:** Climb on heading 176° to 560, for RADAR vectors to VUH VOR/DME, thence
- TAKEOFF RWY 22:** Climb on heading 221° to 700, for RADAR vectors to VUH VOR/DME, thence
- TAKEOFF RWYS 31L/R:** Climb on heading 311° to 560, for RADAR vectors to VUH VOR/DME, thence
- TAKEOFF RWY 35:** Climb on heading 356° to 560, for RADAR vectors to VUH VOR/DME, thence

. . . . on track 118° to HOODO, then on (transition). Maintain 16000.
 Expect filed altitude 10 minutes after departure.

- BOWFN TRANSITION (HOODO6.BOWFN)
- CFOOD TRANSITION (HOODO6.CFOOD)
- HARVEY TRANSITION (HOODO6.HRV)
- LEEVILLE TRANSITION (HOODO6.LEV)
- SBIRD TRANSITION (HOODO6.SBIRD)

NOTE: Chart not to scale.

SC-5, 16 JUL 2020 to 13 AUG 2020