

WAAS CH <b>77510</b> <b>W31A</b>	APP CRS <b>311°</b>	Rwy Idg <b>7599</b> TDZE <b>43</b> Apt Elev <b>46</b>
--	------------------------	---

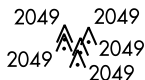
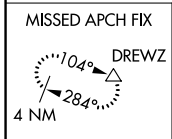
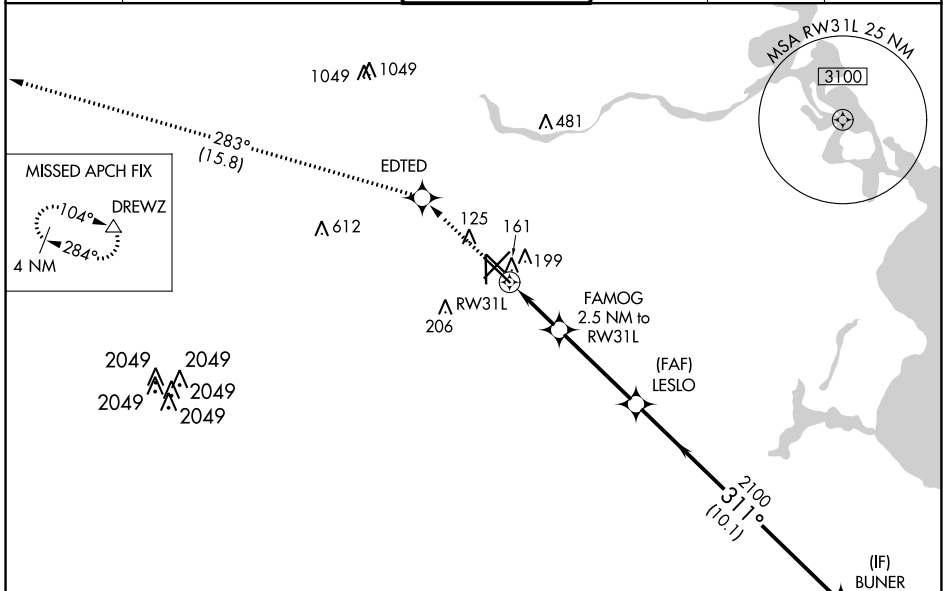
# RNAV (GPS) RWY 31L

WILLIAM P HOBBY (HOU)

**⚠** For uncompensated Baro-VNAV systems, LNAV/VNAV NA below -1.5°C (5°F) or above 43°C (109°F). DME/DME RNP-0.3 NA.

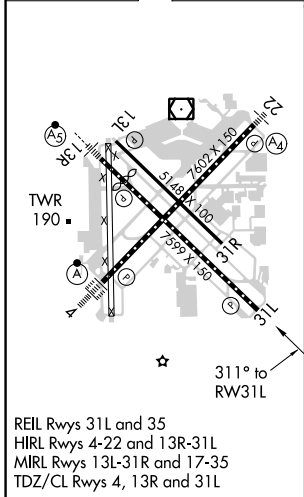
MISSED APPROACH: Climb to 2000 direct EDTED and on track 283° to DREWZ and hold.

D-ATIS <b>124.6</b>	HOUSTON APP CON <b>120.05 379.1 EAST</b> <b>124.35 316.15 WEST</b>	HOBBY TOWER <b>118.7 256.9</b>	GND CON <b>121.9</b>	CLNC DEL <b>125.45</b>	CPDLC
------------------------	--	-----------------------------------	-------------------------	---------------------------	-------

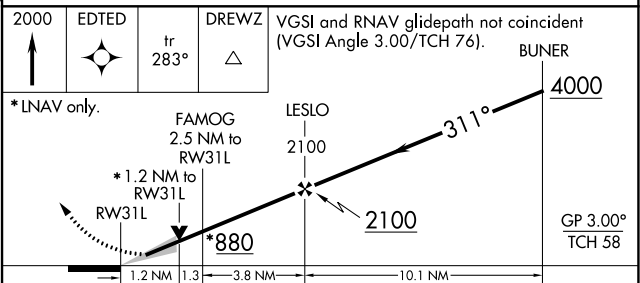


## RADAR REQUIRED

ELEV 46	<b>D</b>	TDZE 43
---------	----------	---------



REIL Rws 31L and 35  
HIRL Rws 4-22 and 13R-31L  
MIRL Rws 13L-31R and 17-35  
TDZ/CL Rws 4, 13R and 31L



CATEGORY	A	B	C	D
LPV DA		243/40	200 (200-¾)	
LNAV/VNAV DA		323/45	280 (300-¾)	
LNAV MDA	500/55	457 (500-1)	500-1¾	457 (500-1¾)
<b>C</b> CIRCLING	500-1 454 (500-1)	520-1 474 (500-1)	740-2¼	694 (700-2¼)

SC-5, 16 JUL 2020 to 13 AUG 2020

SC-5, 16 JUL 2020 to 13 AUG 2020