

APP CRS <b>356°</b>	Rwy Idg <b>6000</b> TDZE <b>46</b> Apt Elev <b>46</b>
------------------------	---

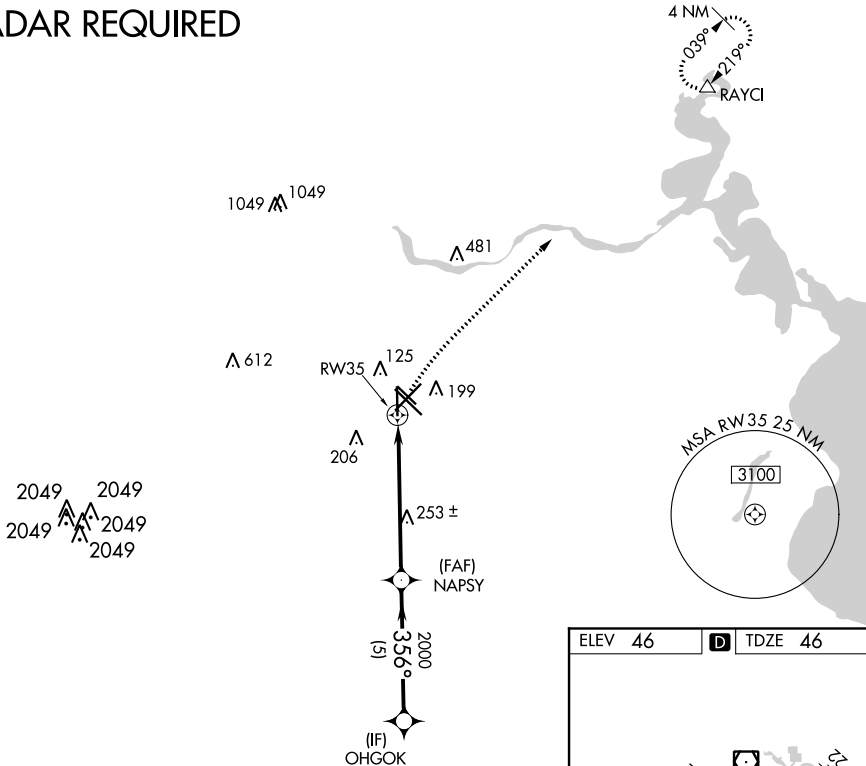
# RNAV (GPS) RWY 35

WILLIAM P HOBBY (HOU)

RNP APCH.		MISSED APPROACH: Climb to 1700 direct RAYCI and hold.			
▼ Rwy 35 helicopter visibility reduction below 3/4 SM NA.					

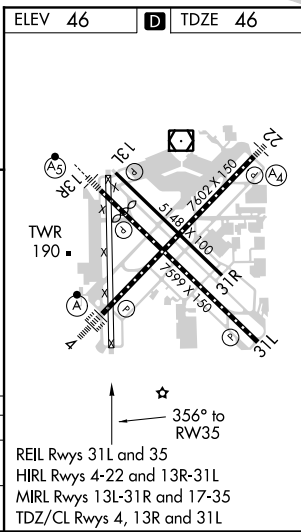
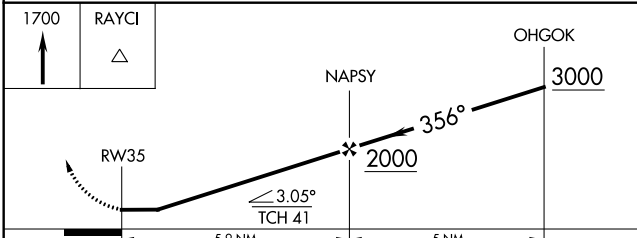
D-ATIS <b>124.6</b>	HOUSTON APP CON <b>120.05 379.1 EAST</b> <b>124.35 316.15 WEST</b>	HOBBY TOWER <b>118.7 256.9</b>	GND CON <b>121.9</b>	CLNC DEL <b>125.45</b>	CPDLC
------------------------	--	-----------------------------------	-------------------------	---------------------------	-------

## RADAR REQUIRED



SC-5, 16 JUL 2020 to 13 AUG 2020

SC-5, 16 JUL 2020 to 13 AUG 2020



CATEGORY	A	B	C	D
LNNAV MDA	560-1	514 (600-1)	560-1½ 514 (600-1½)	560-1¾ 514 (600-1¾)
<b>C</b> CIRCLING	560-1	514 (600-1)	560-1½ 514 (600-1½)	740-2¼ 694 (700-2¼)