

LOC/DME I-MHT 109.1 Chan 28	APP CRS 352°	Rwy ldg 7650 TDZE 265 Apt Elev 266
--	------------------------	---

ILS RWY 35 (SA CAT I)

MANCHESTER (MHT)

From SHOWZ: RNAV 1-DME/DME/IRU or GPS required for procedure entry. DME required.

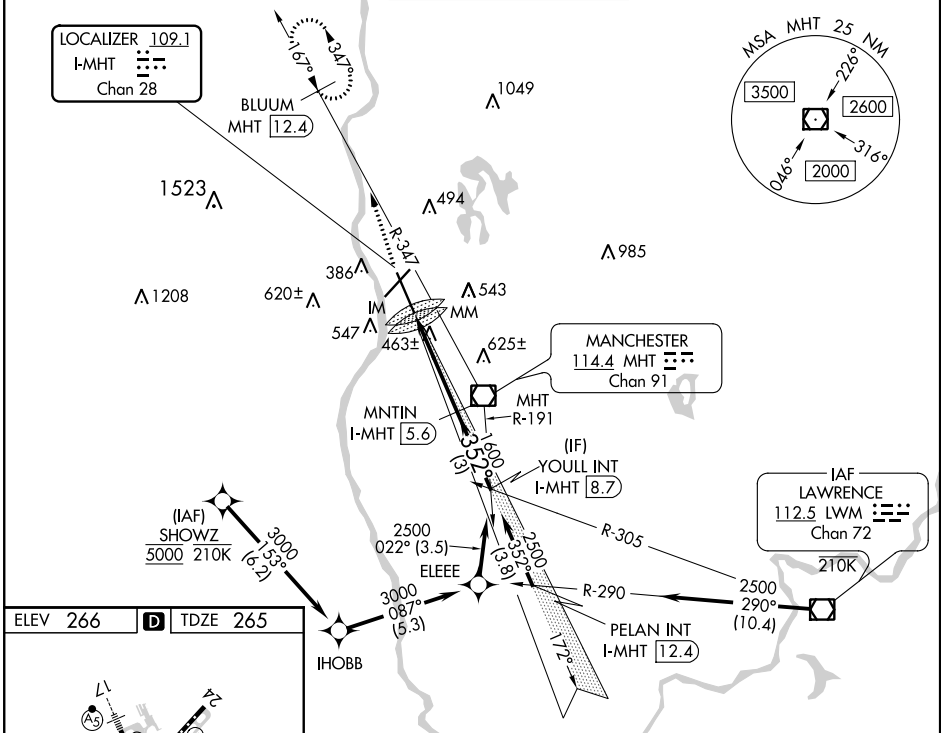
ALSF-2

MISSED APPROACH: Climb to 3000 on heading 355° and MHT VOR/DME R-347 to BLUUM/MHT 12.4 DME and hold, continue climb-in-hold to 3000.

Requires specific OPSPEC, MSPEC, or LOA approval and use of HUD to DH.



ATIS 119.55	BOSTON APP CON 124.9 269.075	MANCHESTER TOWER 121.3 239.025	GND CON 121.9	CLNC DEL 135.9
-----------------------	--	--	-------------------------	--------------------------



NE-1, 16 JUL 2020 to 13 AUG 2020

NE-1, 16 JUL 2020 to 13 AUG 2020

ELEV 266	D	TDZE 265
----------	---	----------

3000 hdg 355°

MHT R-347

BLUUM MHT 12.4

MNTIN I-MHT 5.6

YOULL INT I-MHT 8.7

IM MM

1600

2500

352°

GS 3.00° TCH 55

Distances: 0.4 NM, 3.6 NM, 3 NM

Altitudes: 3000, 2500, 1600

Angles: 352°, 355°, 3.00°

3000	MHT R-347	BLUUM MHT 12.4	VGSI and ILS glidepath not coincident (VGSI Angle 3.00/TCH 68).	YOULL INT I-MHT 8.7
3000	hdg 355°	MNTIN I-MHT 5.6		YOULL INT I-MHT 8.7
IM	MM	1600	2500	GS 3.00° TCH 55
0.4 NM	3.6 NM	3 NM		

CATEGORY	A	B	C	D
S-ILS 35	RA 138/14 150 DA 415			

SA CATEGORY I ILS - SPECIAL AIRCREW & AIRCRAFT CERTIFICATION REQUIRED

REIL Rwy 6 and 24
TDZ/CL Rwy 17 and 35
HIRL Rwy 6-24 and 17-35