


APP CRS	Rwy Idg	7650
352°	TDZE	265
	Apf Elev	266

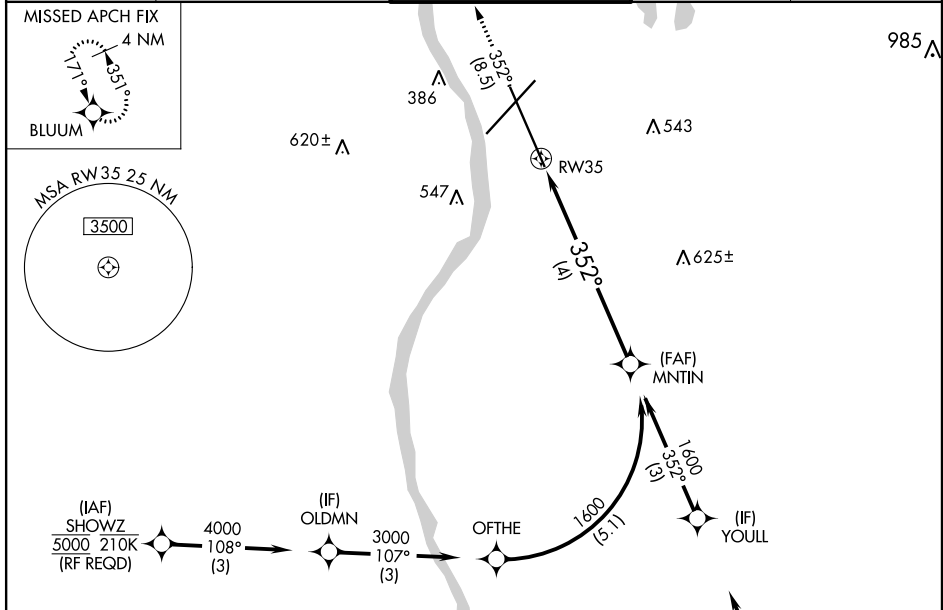
RNAV (RNP) Z RWY 35

MANCHESTER (MHT)

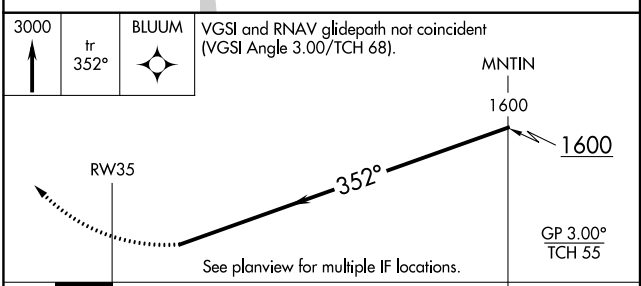
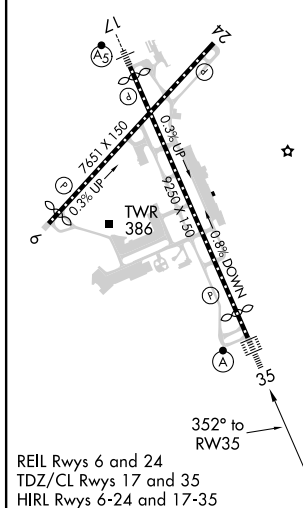
▼ For uncompensated Baro-VNAV systems, procedure NA below -18°C (0°F) or above 54°C (130°F). GPS required. When local altimeter not received, procedure NA. For inop ALSF-2, increase RNP 0.20 all Cats visibility to 1 ½ SM and RNP 0.30 all Cats visibility to 1 ¾ SM.

ALFS-2  MISSED APPROACH: Climb to 3000 on track 352° to BLUUM and hold, continue climb-in-hold to 3000.

ATIS 119.55	BOSTON APP CON 124.9 269.075	MANCHESTER TOWER 121.3 239.025	GND CON 121.9	CLNC DEL 135.9
-----------------------	--	--	-------------------------	--------------------------



ELEV 266	D	TDZE 265
----------	----------	----------



CATEGORY	A	B	C	D
RNP 0.20 DA	755/60	490 (500-1 ¼)		
RNP 0.30 DA	802-1 ¾	537 (600-1 ¾)		

AUTHORIZATION REQUIRED

NE-1, 16 JUL 2020 to 13 AUG 2020

NE-1, 16 JUL 2020 to 13 AUG 2020