

LOC I-MEI 110.1	APP CRS 011°	Rwy Idg 9013
		TDZE 289
		Apt Elev 298

ILS or LOC RWY 1

KEY FIELD (MEI)

RNAV 1- GPS or DME required for procedure entry.

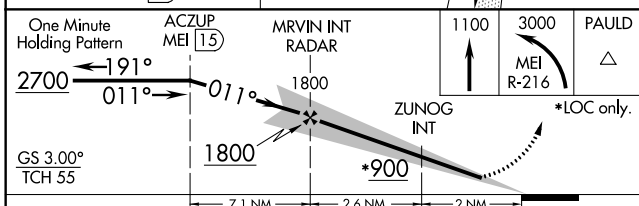
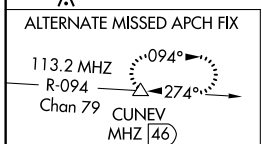
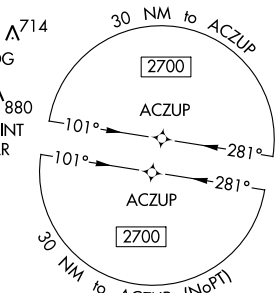
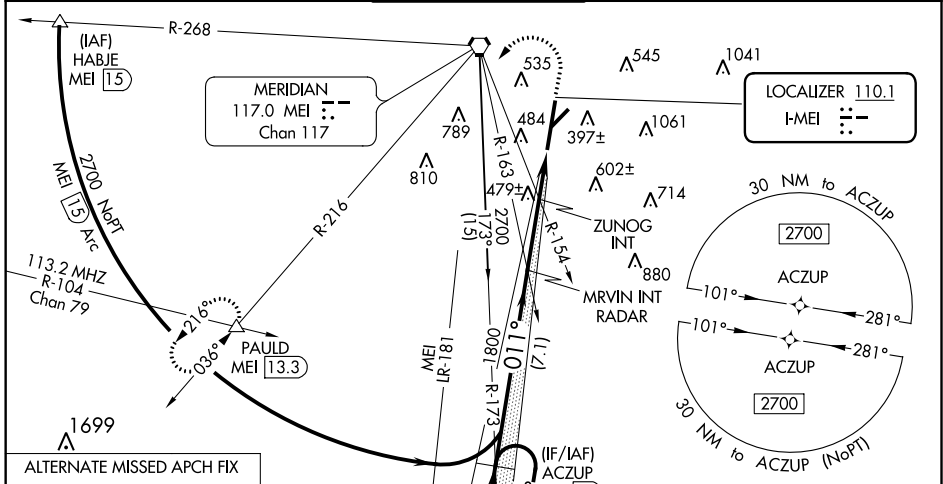
▼
▲
Circling NA southeast of Rwy 1 and 22. When local altimeter not received, use Hattiesburg-Laurel Rgnl altimeter setting and increase all DA 138 feet and all MDA 140 feet, S-ILS 1 all Cats visibility to RVR 3500, S-LOC 1 Cat B visibility to RVR 4000, Cat C, D, and E visibility 3/8 mile, and Circling Cats B and D visibility 1/4 mile, Cat C visibility 1/2 mile; increase ZUNOG Fix minimums S-LOC 1 Cats C, D, and E to RVR 6000, and Circling Cat C visibility 1/2 mile, Cat D and E visibility 1/4 mile. For inop MALS/R when using Hattiesburg-Laurel Rgnl altimeter setting, increase S-ILS 1 all Cats visibility to RVR 6000 and S-LOC 1 Cat E visibility to 1 3/8 mile; increase ZUNOG Fix minimums S-LOC 1 Cat E visibility to 2 miles. Circling Rwy 22 NA at night. ** RVR 1800 authorized with use of FD or AP or HUD to DA (NA when using Hattiesburg-Laurel Rgnl altimeter setting).

MALS/R

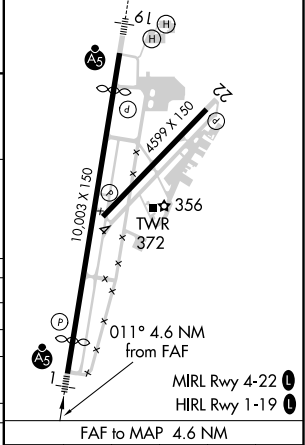


MISSED APPROACH:
Climb to 1100 then climbing left turn to 3000 on MEI VORTAC R-216 to PAULD INT/MEI 13.3 DME and hold.

ATIS 126.475 291.675	MERIDIAN APP CON * 120.5 269.325	KEY TOWER * 133.975 (CTAF) 257.8	GND CON 121.9 348.6	UNICOM 122.95
--------------------------------	--	--	-------------------------------	-------------------------



ELEV 298	TDZE 289
----------	----------



CATEGORY	A	B	C	D	E
S-ILS 1		** 489/24	200 (200-1/2)		
S-LOC 1	900/24	611 (700-1/2)	900-1 3/8	611 (700-1 3/8)	
CIRCLING	900-1	602 (700-1)	960-1 3/4	1120-2 3/4	1120-3
			662 (700-1 3/4)	822 (900-2 3/4)	822 (900-3)
ZUNOG FIX MINIMUMS					
S-LOC 1	700/24	411 (500-1/2)	700/40	411 (500-3/4)	
CIRCLING	860-1	880-1	960-1 3/4	1120-2 3/4	1120-3
	562 (600-1)	582 (600-1)	662 (700-1 3/4)	822 (900-2 3/4)	822 (900-3)

FAF to MAP 4.6 NM					
Knots	60	90	120	150	180
Min:Sec	4:36	3:04	2:18	1:50	1:32

SC-4, 16 JUL 2020 to 13 AUG 2020

SC-4, 16 JUL 2020 to 13 AUG 2020