

WAAS CH <b>48833</b> <b>W22A</b>	APP CRS <b>226°</b>	Rwy Idg <b>4599</b> TDZE <b>298</b> Apt Elev <b>298</b>
--	------------------------	---

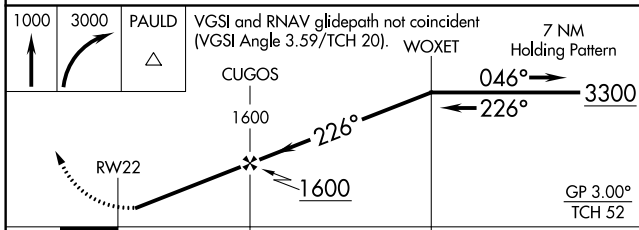
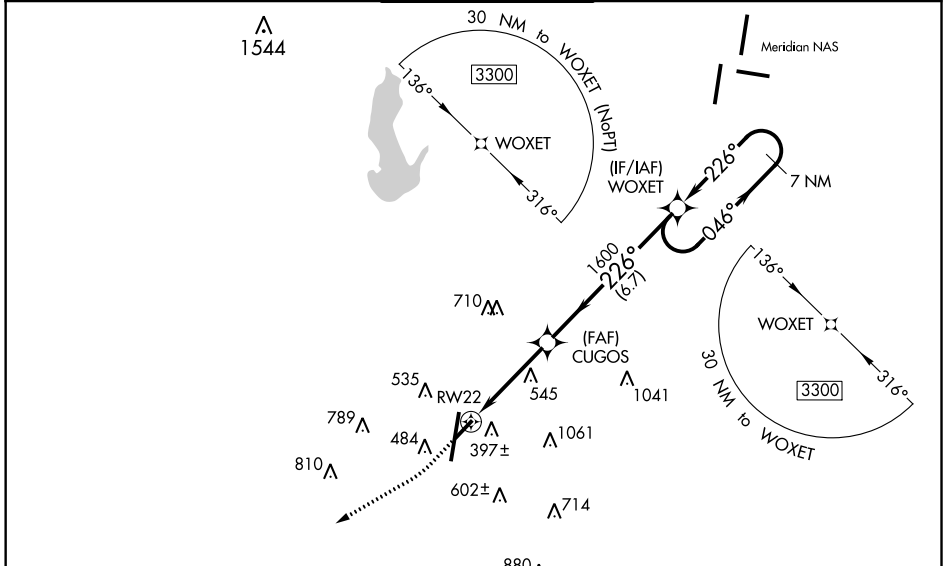
# RNAV (GPS) RWY 22

KEY FIELD (MEI)

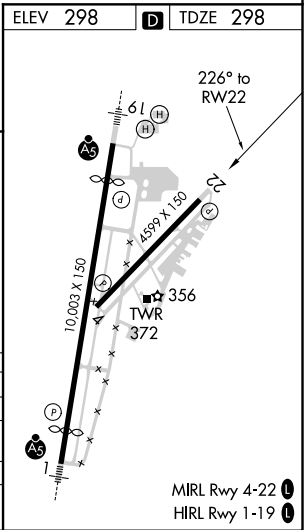
**⚠** Baro-VNAV NA when using Hattiesburg-Laurel Rgnl altimeter setting. For uncompensated Baro-VNAV systems, LNAV/VNAV NA below -8°C (18°F) or above 54°C (130°F). Circling NA southeast of Rwy 1 and 22. DME/DME RNP-0.3 NA. When local altimeter setting not received, use Hattiesburg-Laurel Rgnl altimeter setting and increase all DA 138 feet and all MDA 140 feet; increase LPV all Cats visibility 3/8 mile, LNAV/VNAV all Cats visibility 3/4 mile, LNAV Cat B 1/4 mile, Cat C and D visibility 5/8 mile, and Circling Cat C visibility 1/2 mile and Cat B and D visibility 1/4 mile. Helicopter visibility reduction below 1 SM NA. Straight-in/Circling Rwy 22 NA at night.

**MISSED APPROACH:**  
Climb to 1000 then climbing right turn to 3000 direct PAULD and hold.

ATIS <b>126.475 291.675</b>	MERIDIAN APP CON * <b>120.5 269.325</b>	KEY TOWER * <b>133.975 (CTAF) 257.8</b>	GND CON <b>121.9 348.6</b>	UNICOM <b>122.95</b>
--------------------------------	--	--	-------------------------------	-------------------------



CATEGORY	A	B	C	D
LPV DA	562-1 264 (300-1)			
LNAV/VNAV DA	822-1 3/4 524 (600-1 3/4)			
LNAV MDA	940-1	642 (700-1)	940-1 7/8	642 (700-1 7/8)
CIRCLING	940-1	642 (700-1)	960-2	1120-2 3/4
			662 (700-2)	822 (900-2 3/4)



SC-4, 16 JUL 2020 to 13 AUG 2020

SC-4, 16 JUL 2020 to 13 AUG 2020