

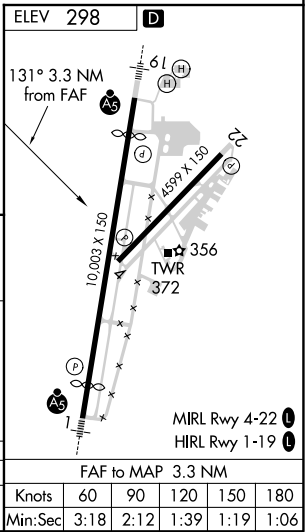
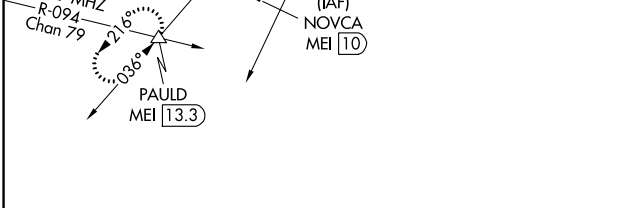
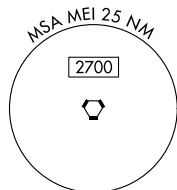
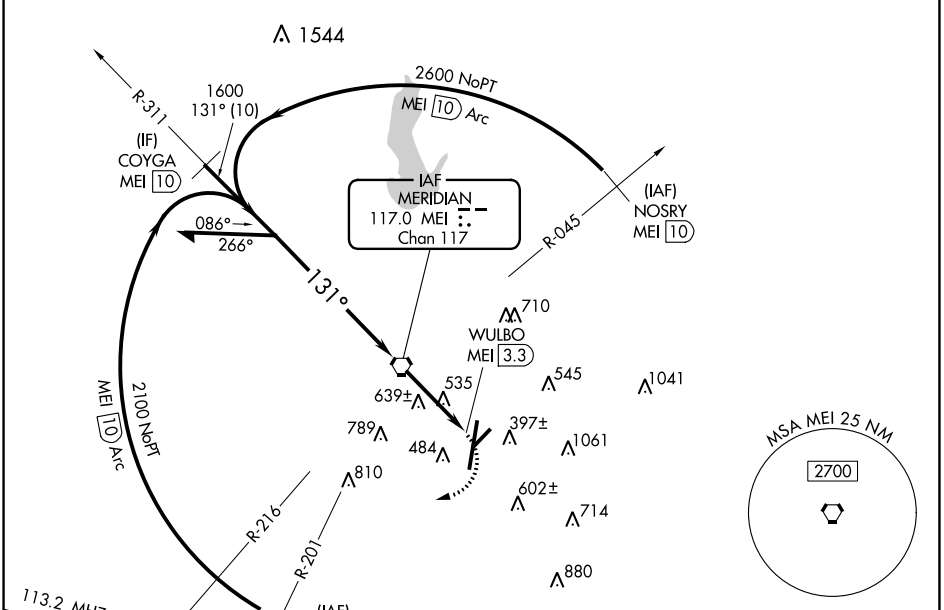
VORTAC MEI <b>117.0</b> Chan <b>117</b>	APP CRS <b>131°</b>	Rwy Idg TDZE Apt Elev	<b>N/A</b> <b>N/A</b> <b>298</b>
---	------------------------	-----------------------------	--

**VOR-A**  
KEY FIELD (MEI)

**⚠** Circling to Rwy 22 NA at night. Circling NA southeast of Rws 1 and 22. When local altimeter setting not received, use Hattiesburg-Laurel Rgnl altimeter setting and increase all MDA 140 feet, increase Cat C visibility ½ mile and Cat D visibility ¼ mile. Procedure turn NA for Cat E.

MISSED APPROACH: Climbing right turn to 3000 on heading 260° and MEI R-216 to PAULD INT/MEI 13.3 DME and hold.

ATIS <b>126.475 291.675</b>	MERIDIAN APP CON * <b>120.5 269.325</b>	KEY TOWER * <b>133.975 (CTAF) 257.8</b>	GND CON <b>121.9 348.6</b>	UNICOM <b>122.95</b>
--------------------------------	--	--	-------------------------------	-------------------------



CATEGORY	A	B	C	D	E
	900-1	602 (700-1)	960-1¾ 662 (700-1¾)	1120-2¾ 822 (900-2¾)	1120-3 822 (900-3)

CIRCLING	FAF to MAP 3.3 NM					
	Knots	60	90	120	150	180
	Min:Sec	3:18	2:12	1:39	1:19	1:06

SC-4, 16 JUL 2020 to 13 AUG 2020

SC-4, 16 JUL 2020 to 13 AUG 2020