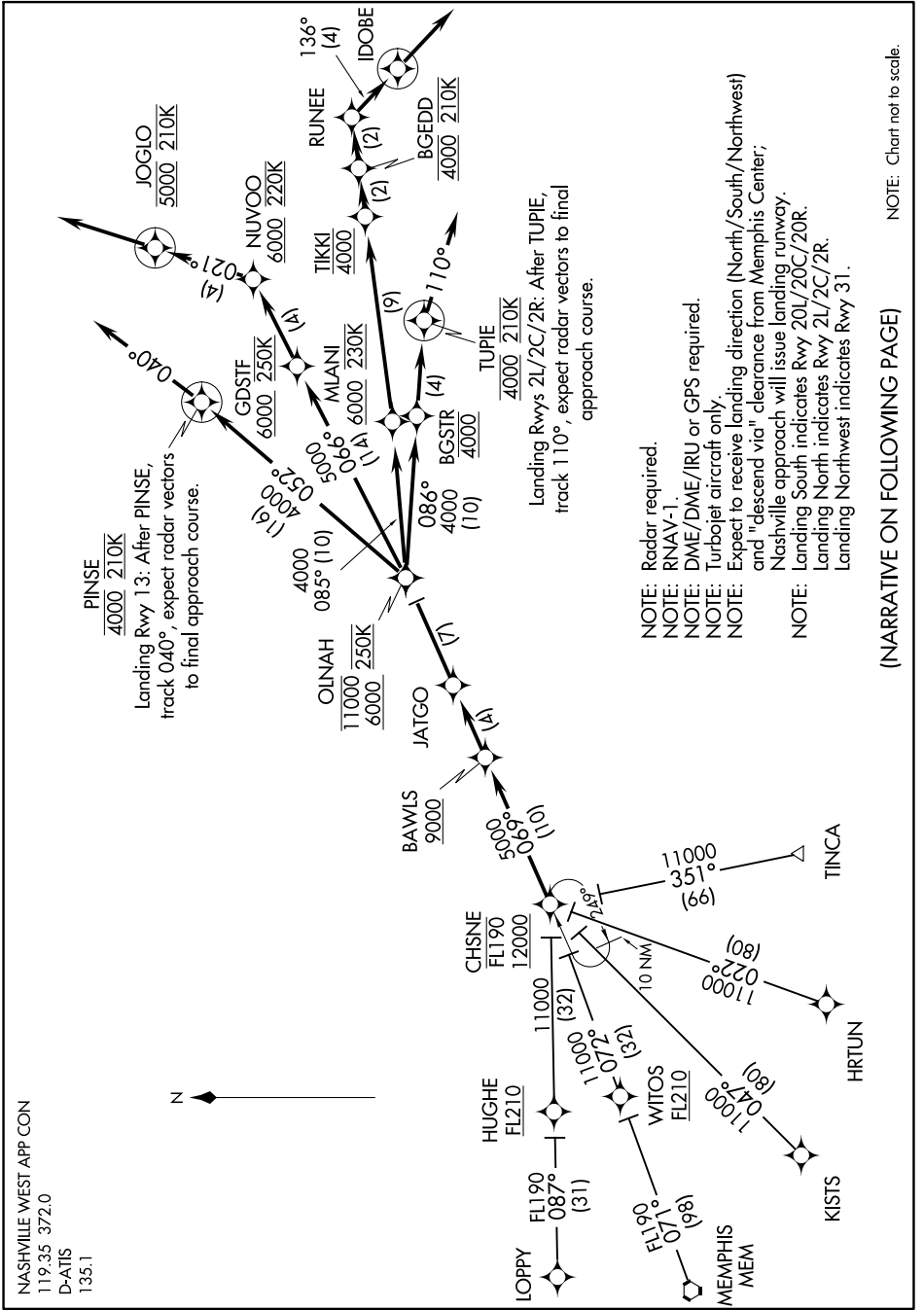


CHSNE TWO ARRIVAL (RNAV)

SE-1, 16 JUL 2020 to 13 AUG 2020



CHSNE TWO ARRIVAL (RNAV)

- NOTE: Radar required.
- NOTE: RNAV-1.
- NOTE: DME/DME/IRU or GPS required.
- NOTE: Turbojet aircraft only.
- NOTE: Expect to receive landing direction (North/South/Northwest) and "descend via" clearance from Memphis Center.
- NOTE: Nashville approach will issue landing runway. Landing South indicates Rwy 20L/20C/20R. Landing North indicates Rwy 2L/2C/2R. Landing Northwest indicates Rwy 31.

(NARRATIVE ON FOLLOWING PAGE)

NOTE: Chart not to scale.

SE-1, 16 JUL 2020 to 13 AUG 2020