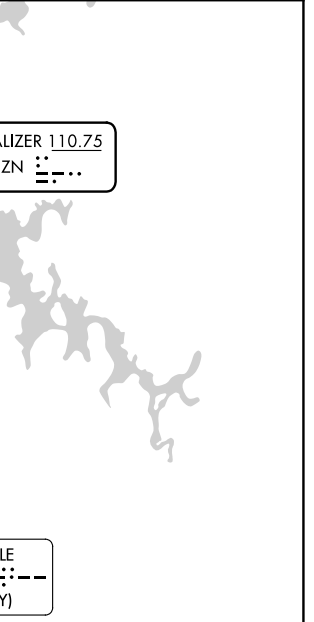
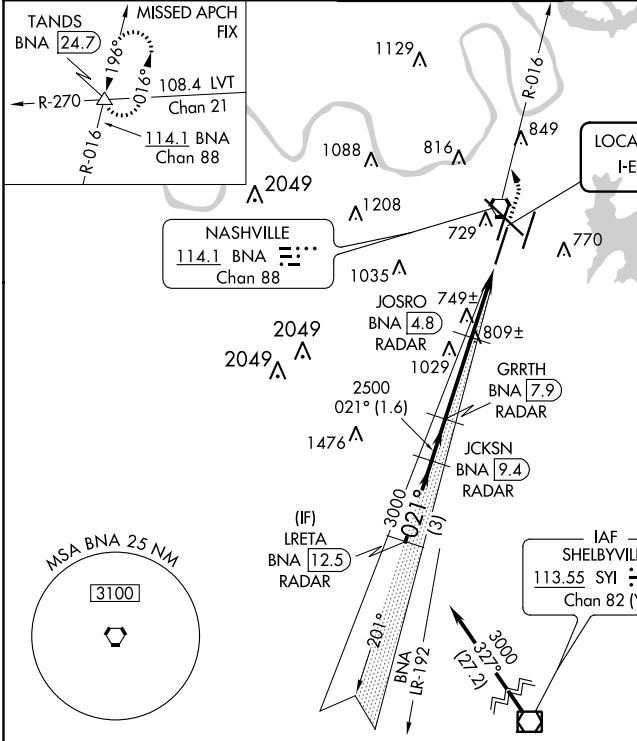


ILS or LOC RWY 2C

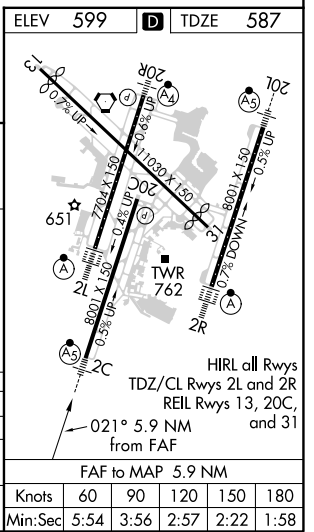
NASHVILLE INTL (BNA)

LOC I-EZN 110.75	APP CRS 021°	Rwy Idg 7601
		TDZE 587
		Apt Elev 599

DME or RADAR required.		MALSR		MISSED APPROACH: Climb to 1300 then climbing left turn to 4000 on BNA VORTAC R-016 to TANDS INT/BNA 24.7 and hold.	
▼ Simultaneous approach authorized. For inop ALS, increase S-LOC 2C Cats C and D visibility to RVR 6000. DME from BNA VORTAC. ▲ Simultaneous reception of I-EZN and BNA DME required. #RVR 1800 authorized with the use of FD or AP or HUD to DA.					
D-ATIS 135.1	NASHVILLE APP CON 118.4 360.7	NASHVILLE TOWER 118.6 257.8	GND CON 121.9 348.6	CLNC DEL 126.05	CPDLC



	LRETA BNA 12.5 RADAR	JKSJN BNA 9.4 RADAR	GRRTH BNA 7.9 RADAR	JOSRO BNA 4.8 RADAR	BNA 3.2	BNA 2	TANDS BNA 24.7
	3000	2500	2500	1520	1520	1520	1300
	3 NM	1.6 NM	3.1 NM	1.6 NM	1.2 NM		
CATEGORY	A	B	C	D			
S-ILS 2C #		787/24	200 (200-1/2)				
S-LOC 2C	1000/24	413 (500-1/2)	1000/40	413 (500-3/4)			
CIRCLING	1100-1 501 (600-1)	1120-1 521 (600-1)	1200-1 3/4 601 (700-1 3/4)	1380-2 1/2 781 (800-2 1/2)			



SE-1, 16 JUL 2020 to 13 AUG 2020

SE-1, 16 JUL 2020 to 13 AUG 2020

ELEV	599	TDZE	587
Knots	60	90	120
Min:Sec	5:54	3:56	2:57
		150	180
		2:22	1:58