

# RNAV (RNP) Z RWY 20L

NASHVILLE INTL (BNA)

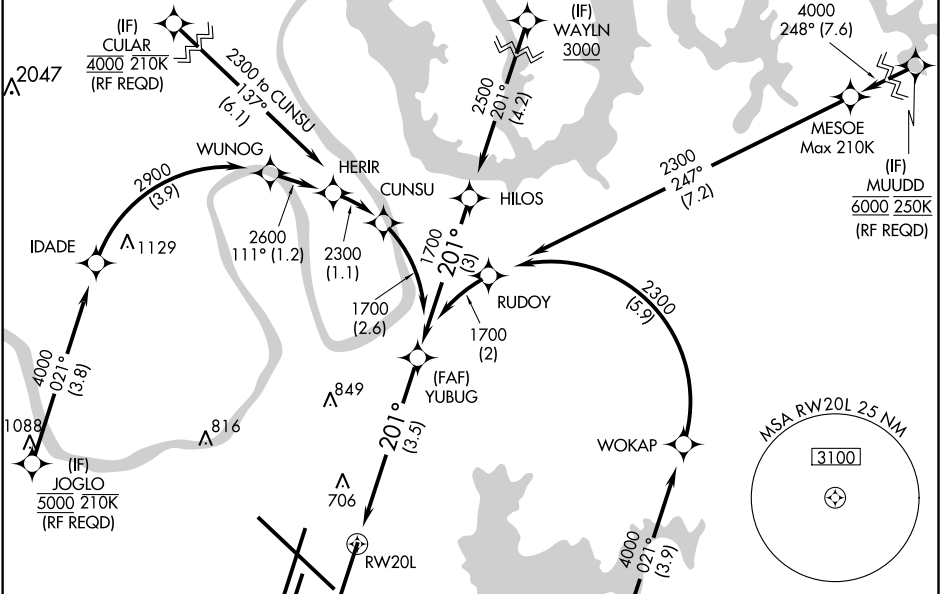
APP CRS	Rwy Idg	<b>8000</b>
<b>201°</b>	TDZE	<b>551</b>
	Apt Elev	<b>599</b>

**GPS required.** Simultaneous approach authorized with Rwy 20R. Use of FD or AP providing RNAV track guidance required during simultaneous operations. For uncompensated Baro-VNAV systems, procedure NA below -11°C (13°F) or above 54°C (130°F). Inop table does not apply to RNP 0.20. For inop MALSR, increase RNP 0.30 all Cats visibility to 1½.

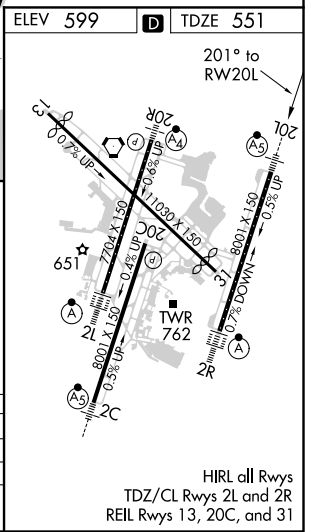
**MALSR**

**MISSED APPROACH:** Climb to 1300 then climbing left turn to 4000 direct CENOP and hold.

D-ATIS <b>135.1</b>	NASHVILLE APP CON <b>118.4 360.7</b>	NASHVILLE TOWER <b>118.6 257.8</b>	GND CON <b>121.9 348.6</b>	CLNC DEL <b>126.05</b>	CPDLC
------------------------	---	---------------------------------------	-------------------------------	---------------------------	-------



ELEV 599	<b>D</b> TDZE 551
----------	-------------------



1300	4000	CENOP	YUBUG 1700
See planview for multiple IF locations.			
RWY 20L			
			GP 3.00° TCH 47
		3.5 NM	

CATEGORY	A	B	C	D
RNP 0.20 DA		810/40	259 (200-¾)	
RNP 0.30 DA		1008/55	457 (400-1)	

## AUTHORIZATION REQUIRED

SE-1, 16 JUL 2020 to 13 AUG 2020

SE-1, 16 JUL 2020 to 13 AUG 2020