

APP CRS	Rwy Idg	7702
021°	TDZE	599
	Apt Elev	599

RNAV (RNP) Z RWY 2L

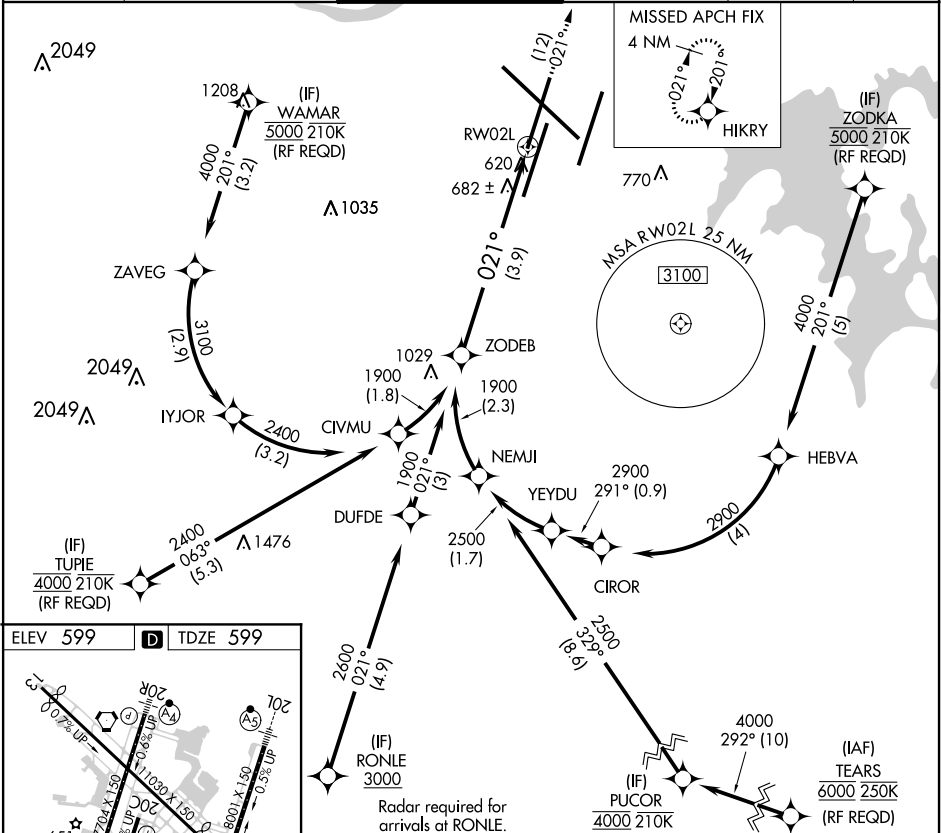
NASHVILLE INTL (BNA)

▼ For uncompensated Baro-VNAV systems, procedure NA below -11°C (13°F) or above 54°C (130°F). GPS required. Simultaneous approach authorized with Rwy 2R. For inop ALSF-2, increase RNP 0.15 all Cats visibility to RVR 4700, increase RNP 0.30 all Cats visibility to 1¼ mile. Use of FD or AP providing RNAV track guidance required during simultaneous operations.

ALSF-2

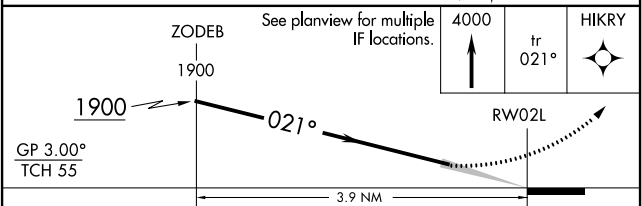
MISSED APPROACH:
Climb to 4000 on track 021° to HIKRY and hold, continue climb-in-hold to 4000.

D-ATIS 135.1	NASHVILLE APP CON 118.4 360.7	NASHVILLE TOWER 118.6 257.8	GND CON 121.9 348.6	CLNC DEL 126.05	CPDLC
------------------------	---	---------------------------------------	-------------------------------	---------------------------	-------



ELEV 599 **D** TDZE 599

HIRL all Rws
TDZ/CL Rws 2L and 2R
REIL Rws 13, 20C, and 31



CATEGORY	A	B	C	D
RNP 0.15 DA		898/24	299 (300-½)	
RNP 0.30 DA		991/41	392 (400-¾)	

AUTHORIZATION REQUIRED

SE-1, 16 JUL 2020 to 13 AUG 2020

SE-1, 16 JUL 2020 to 13 AUG 2020