

WAAS CH 49013 W20D	APP CRS 201°	Rwy Idg 8000 TDZE 551 Apt Elev 599
--	------------------------	---

RNAV (GPS) Y RWY 20L

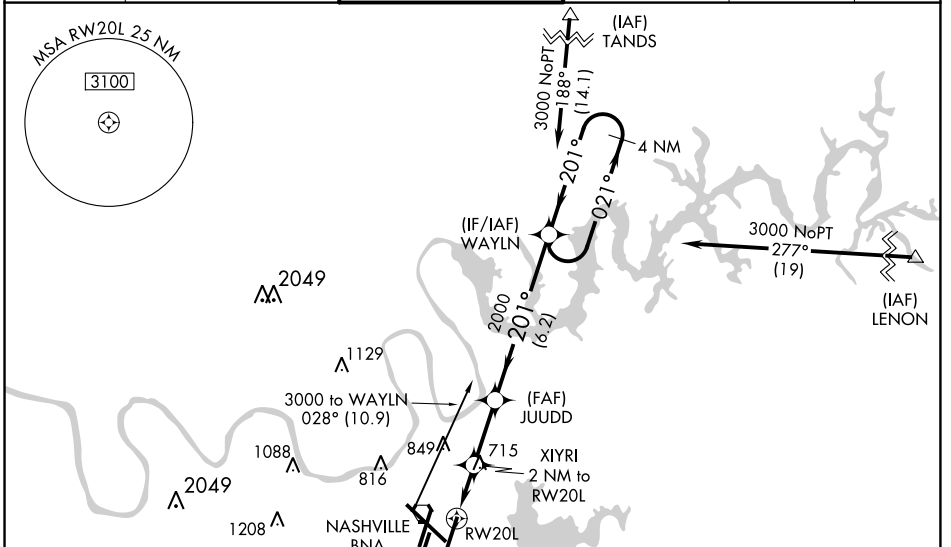
NASHVILLE INTL (BNA)

⚠ For uncompensated Baro-VNAV systems, procedure NA below -11°C (13°F) or above 54°C (130°F), DME/DME RNP-0.3 NA. Simultaneous approach authorized with Rwy 20R.
⚠ LNAV procedure NA during simultaneous operations. Use of FD or AP providing RNAV track guidance required during simultaneous operations. For inop MALS/R, increase LNAV/VNAV all Cts visibility to 1%. ** RVR 1800 authorized with use of FD or AP or HUD to DA.

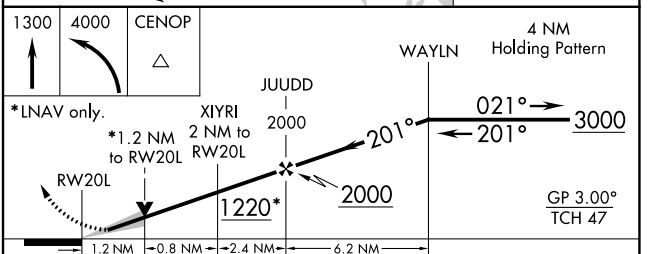
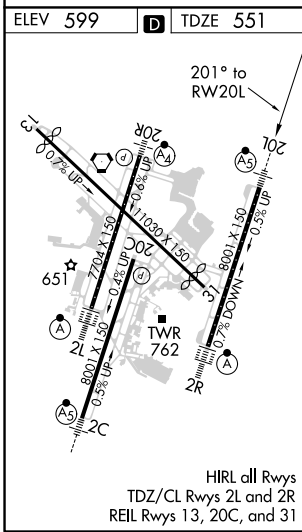
MALS/R

MISSED APPROACH:
 Climb to 1300 then climbing left turn to 4000 direct CENOP and hold.

D-ATIS 135.1	NASHVILLE APP CON 118.4 360.7	NASHVILLE TOWER 118.6 257.8	GND CON 121.9 348.6	CLNC DEL 126.05	CPDLC
------------------------	---	---------------------------------------	-------------------------------	---------------------------	-------



ELEV 599 **D** TDZE 551



CATEGORY	A	B	C	D
LPV DA		** 751/24	200 (200-½)	
LNAV/VNAV DA		1025/58	474 (500-1¼)	
LNAV MDA	980/24	429 (400-½)	980/40	429 (400-¾)
C CIRCLING	1100-1 501 (600-1)	1120-1 521 (600-1)	1200-1¾ 601 (700-1¾)	1380-2½ 781 (800-2½)

SE-1, 16 JUL 2020 to 13 AUG 2020

SE-1, 16 JUL 2020 to 13 AUG 2020