

WAAS CH 65913 W31A	APP CRS 316°	Rwy Idg TDZE Apt Elev	9487 578 599
--	------------------------	-----------------------------	---

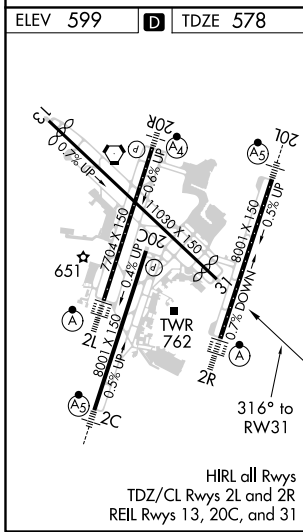
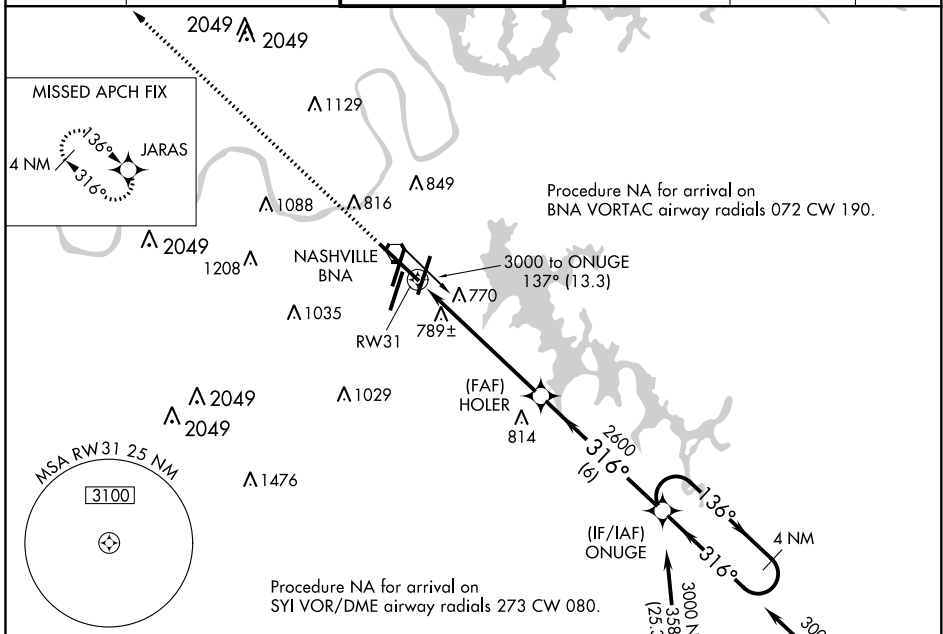
RNAV (GPS) Y RWY 31

NASHVILLE INTL (BNA)

▽ For uncompensated Baro-VNAV systems, LNAV/VNAV NA below -11°C (13°F) or above 54°C (130°F).
▲ DME/DME RNP-0.3 NA.

MISSED APPROACH: Climb to 3100 direct JARAS and hold.

D-ATIS 135.1	NASHVILLE APP CON 118.4 360.7	NASHVILLE TOWER 118.6 257.8	GND CON 121.9 348.6	CLNC DEL 126.05	CPDLC
------------------------	---	---------------------------------------	-------------------------------	---------------------------	-------



ELEV 599	D	TDZE 578												
<table border="1"> <tr> <td>3100 JARAS</td> <td>ONUGE 4 NM Holding Pattern</td> </tr> <tr> <td>*LNAV only.</td> <td></td> </tr> <tr> <td>HOLER 2600</td> <td>3000</td> </tr> <tr> <td>RW31 1.4 NM to RW31</td> <td>GP 3.00° TCH 52</td> </tr> <tr> <td>1.4 NM</td> <td>4.8 NM</td> </tr> <tr> <td>6 NM</td> <td></td> </tr> </table>			3100 JARAS	ONUGE 4 NM Holding Pattern	*LNAV only.		HOLER 2600	3000	RW31 1.4 NM to RW31	GP 3.00° TCH 52	1.4 NM	4.8 NM	6 NM	
3100 JARAS	ONUGE 4 NM Holding Pattern													
*LNAV only.														
HOLER 2600	3000													
RW31 1.4 NM to RW31	GP 3.00° TCH 52													
1.4 NM	4.8 NM													
6 NM														
CATEGORY	A	B	C	D										
LPV DA		778-3/4	200 (200-3/4)											
LNAV/VNAV DA		1061-1 5/8	483 (500-1 5/8)											
LNAV MDA	1060-1	482 (500-1)	1060-1 3/8	482 (500-1 3/8)										
C CIRCLING	1100-1 501 (600-1)	1120-1 521 (600-1)	1200-1 3/4 601 (700-1 3/4)	1380-2 1/2 781 (800-2 1/2)										

SE-1, 16 JUL 2020 to 13 AUG 2020

SE-1, 16 JUL 2020 to 13 AUG 2020