



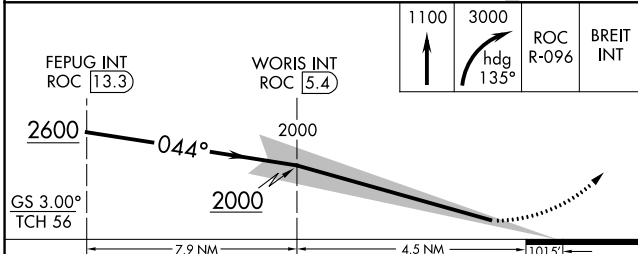
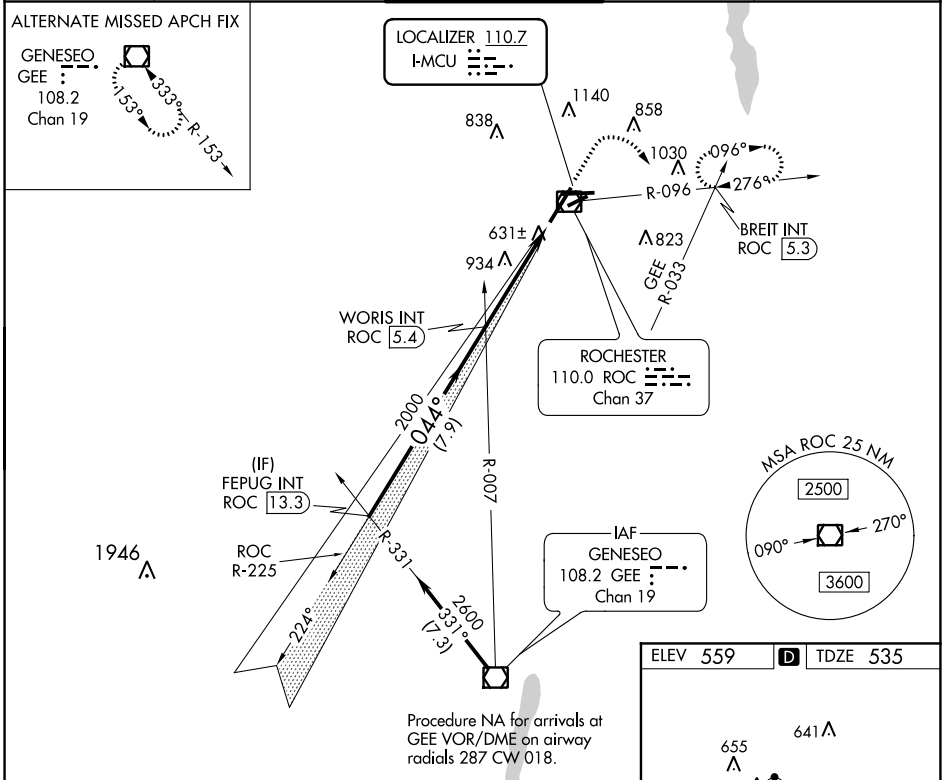
LOC I-MCU <b>110.7</b>	APP CRS <b>044°</b>	Rwy Idg TDZE Apt Elev <b>8001</b> <b>535</b> <b>559</b>
---------------------------	------------------------	--

# ILS RWY 4 (CAT II)

GREATER ROCHESTER INTL (ROC)

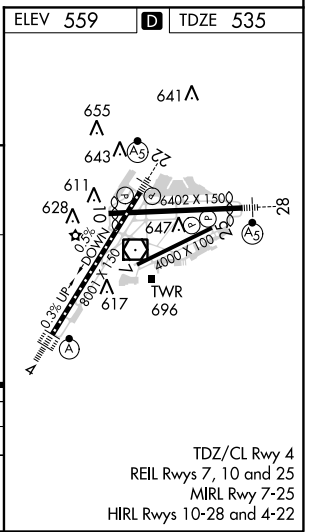
	ALSF-2	MISSED APPROACH: Climb to 1100 then climbing right turn to 3000 on heading 135° and ROC VOR/DME R-096 to BREIT INT/ROC 5.3 DME and hold, continue climb-in-hold to 3000.		
				

ATIS <b>124.825</b>	ROCHESTER APP CON <b>119.55 269.6</b>	ROCHESTER TOWER <b>118.3 254.3</b>	GND CON <b>121.7</b>	CLNC DEL <b>118.8 343.65</b>
------------------------	--	---------------------------------------	-------------------------	---------------------------------



CATEGORY	A	B	C	D
S-ILS 4		RA 107/12	100 DA 635	

**CATEGORY II ILS - SPECIAL AIRCREW & AIRCRAFT CERTIFICATION REQUIRED**



TDZ/CL Rwy 4  
 REIL Rwy 7, 10 and 25  
 MIRL Rwy 7-25  
 HIRL Rwy 10-28 and 4-22

NE-2, 16 JUL 2020 to 13 AUG 2020

NE-2, 16 JUL 2020 to 13 AUG 2020