

LOC I-MCU <b>110.7</b>	APP CRS <b>044°</b>	Rwy Idg TDZE Apt Elev	<b>8001</b> <b>535</b> <b>559</b>
---------------------------	------------------------	-----------------------------	---

# ILS RWY 4 (SA CAT I)

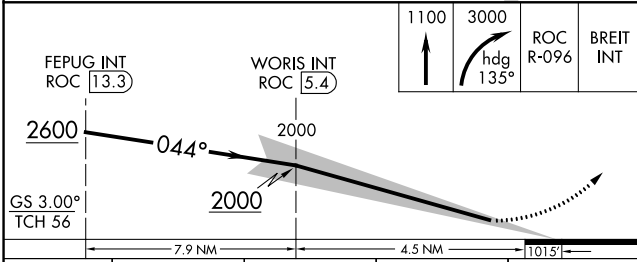
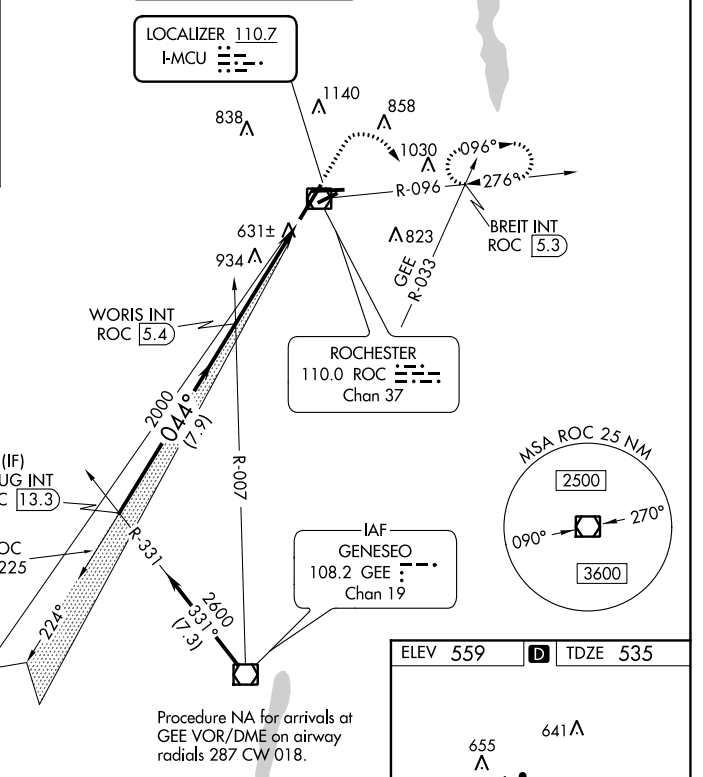
## GREATER ROCHESTER INTL (ROC)

<p>Requires specific OPSPEC, MSPEC, or LOA approval and use of the HUD to DA.</p>	ALSIF-2	MISSED APPROACH: Climb to 1100 then climbing right turn to 3000 on heading 135° and ROC VOR/DME R-096 to BREIT INT/ROC 5.3 DME and hold, continue climb-in-hold to 3000.

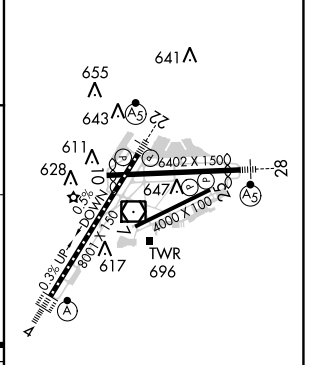
ATIS <b>124.825</b>	ROCHESTER APP CON <b>119.55 269.6</b>	ROCHESTER TOWER <b>118.3 254.3</b>	GND CON <b>121.7</b>	CLNC DEL <b>118.8 343.65</b>
------------------------	--	---------------------------------------	-------------------------	---------------------------------

ALTERNATE MISSED APCH FIX

GENESECO  
GEE  
108.2  
Chan 19



ELEV 559	<b>D</b> TDZE 535
----------	-------------------



CATEGORY	A	B	C	D
S-ILS 4	RA 157/14		150 DA 685	

**SA CATEGORY I ILS - SPECIAL AIRCREW & AIRCRAFT CERTIFICATION REQUIRED**

ROCHESTER, NEW YORK  
Amdt 21B 20AUG15

GREATER ROCHESTER INTL (ROC)  
**ILS RWY 4 (SA CAT I)**

TDZ/CL Rwy 4  
REIL Rwy 7, 10 and 25  
MIRL Rwy 7-25  
HIRL Rwy 10-28 and 4-22

NE-2, 16 JUL 2020 to 13 AUG 2020

NE-2, 16 JUL 2020 to 13 AUG 2020