

LOC/DME I-ROC 109.5 Chan 32	APP CRS 280°	Rwy Idg TDZE Apt Elev	5802 550 559
---	------------------------	-----------------------------	---

ILS or LOC RWY 28

GREATER ROCHESTER INTL (ROC)

▼ Helicopter visibility reduction below RVR 4000 NA.
▲ Multiple unshielded lights in final approach area.
 For inop MALSR, increase S-ILS 28 all Cats visibility to RVR 4500 and S-LOC 28 Cat A/B visibility to RVR 5500. For inop MALSR with ZIKSO fix minimums, increase S-LOC 28 Cat A/B visibility to RVR 5500 and Cat C/D visibility to 1½.

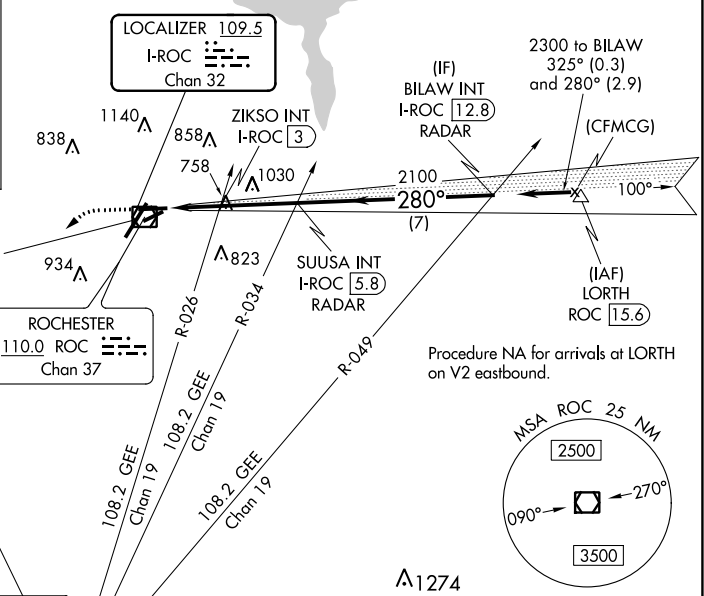


MISSED APPROACH: Climb to 2000 then climbing left turn to 3000 on heading 230° and ROC VOR/DME R-268 to MONCK INT/ROC 10 DME and hold.

ATIS 124.825	ROCHESTER APP CON 119.55 269.6	ROCHESTER TOWER 118.3 254.3	GND CON 121.7	CLNC DEL 118.8 343.65
------------------------	--	---------------------------------------	-------------------------	---------------------------------

ALTERNATE MISSED APCH FIX

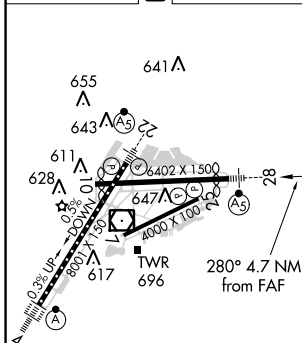
GENESEEO
GEE
108.2
Chan 19



NE-2, 16 JUL 2020 to 13 AUG 2020

NE-2, 16 JUL 2020 to 13 AUG 2020

ELEV 559	D	TDZE 550
----------	----------	----------



2000	3000	ROC R-268	MONCK	SUUSA INT I-ROC 5.8	BILAW INT I-ROC 12.8
*LOC only					
ZIKSO INT I-ROC 3					
RADAR					
2100					
280°					
2300					
GS 3.00° TCH 58					
1.3 NM					
0.7					
2.8 NM					
7 NM					

CATEGORY	A	B	C	D
S-ILS 28	821/40 271 (300-¾)			
S-LOC 28	1200/40	650 (700-¾)	1200-1½	650 (700-1½)
C CIRCLING	1200-1	641 (700-1)	1500-2¾ 941 (1000-2¾)	1500-3 941 (1000-3)
ZIKSO FIX MINIMUMS (DUAL VOR RECEIVERS OR DME REQUIRED)				
S-LOC 28	1020/40	470 (500-¾)	1020/50	470 (500-1)
C CIRCLING	1060-1	501 (600-1)	1500-2¾ 941 (1000-2¾)	1500-3 941 (1000-3)