

LOC/DME I-TUL <b>110.3</b> Chan <b>40</b>	APP CRS <b>360°</b>	Rwy Idg <b>10000</b> TDZE <b>650</b> Apt Elev <b>678</b>
-------------------------------------------------	------------------------	----------------------------------------------------------------

# ILS RWY 36R (CAT II)

## TULSA INTL (TUL)

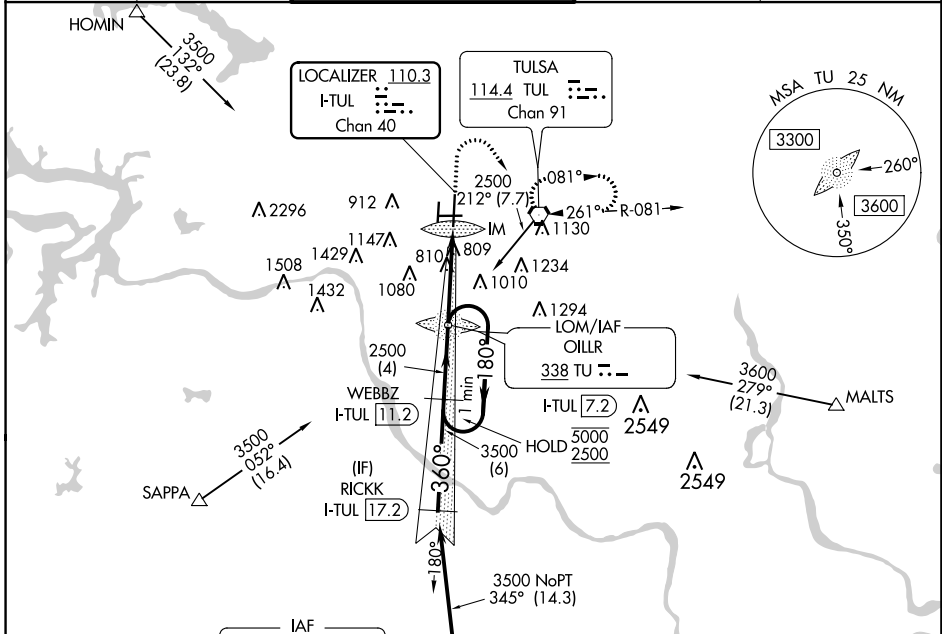
ADF or DME required for procedure entry.

**ASR** Simultaneous approach authorized.



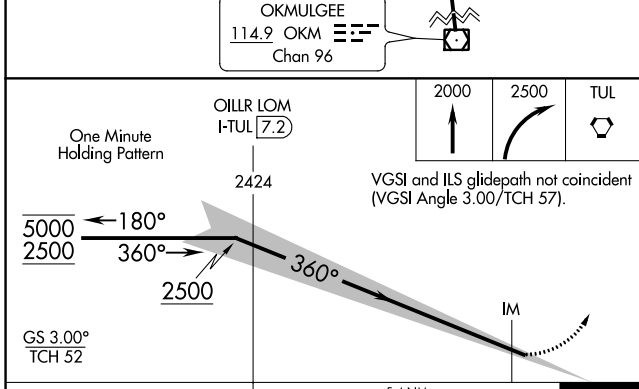
**MISSED APPROACH:** Climb to 2000 then climbing right turn to 2500 direct TUL VORTAC and hold. (TACAN aircraft climb to 2000 then climbing right turn to 3500 via TUL VORTAC R-079 to INOLA INT/17.9 DME and hold E, RT, 259° inbound).

D-ATIS <b>124.9 377.2</b>	TULSA APP CON <b>124.0 338.3</b>	TULSA TOWER <b>121.2 310.8</b> (Rwys 18L-36R, 8-26) <b>118.7 257.8</b> (Rwy 18R-36L)	GND CON <b>121.9 348.6</b>	CLNC DEL <b>134.05 284.7</b>
------------------------------	-------------------------------------	--------------------------------------------------------------------------------------------	-------------------------------	---------------------------------

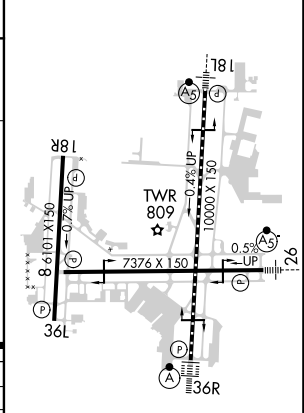


SC-1, 16 JUL 2020 to 13 AUG 2020

SC-1, 16 JUL 2020 to 13 AUG 2020



ELEV 678	<b>D</b>	TDZE 650
----------	----------	----------



CATEGORY	A	B	C	D
S-ILS 36R	RA 116/12 100 DA 750			

**CATEGORY II ILS-SPECIAL AIRCREW & AIRCRAFT CERTIFICATION REQUIRED**

TDZ/CL Rwy 36R  
HIRL Rwys 8-26, 18L-36R and 18R-36L  
REIL Rwys 8, 18R, 26 and 36L