

WAAS CH 69614 W18B	APP CRS 180°	Rwy Idg TDZE 668 Apt Elev 678
--	------------------------	---

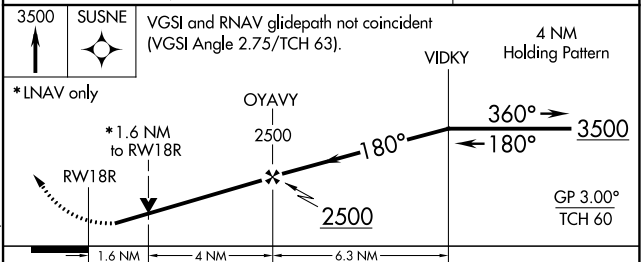
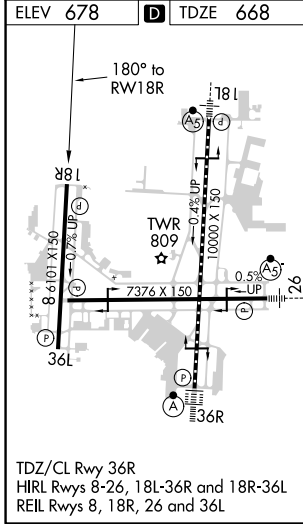
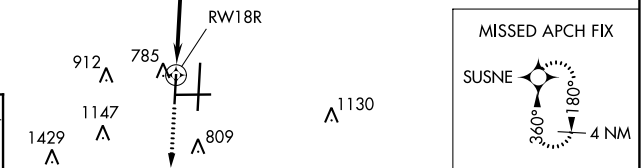
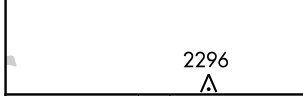
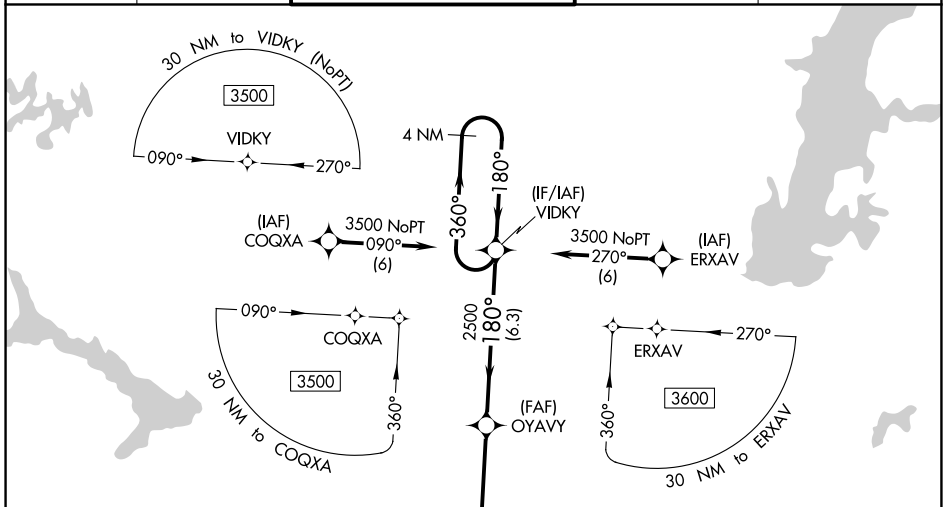
RNAV (GPS) RWY 18R

TULSA INTL (TUL)

ASR For uncompensated Baro-VNAV systems, LNAV/VNAV NA below -13°C (9°F) or above 54°C (130°F). Circling NA for Cat E south of Rwy 8-26. DME/DME RNP-0.3 NA. Helicopter visibility reduction below ¾ SM NA. Simultaneous approach authorized with ILS or LOC Rwy 18L. LNAV procedure NA during simultaneous operations. Use of FD or AP providing RNAV track guidance required during simultaneous operations.

MISSED APPROACH: Climb to 3500 direct SUSNE and hold.

D-ATIS 124.9 377.2	TULSA APP CON 124.0 338.3	TULSA TOWER 121.2 310.8 (Rwys 18L-36R, 8-26) 118.7 257.8 (Rwy 18R-36L)	GND CON 121.9 348.6	CLNC DEL 134.05 284.7
------------------------------	-------------------------------------	--	-------------------------------	---------------------------------



CATEGORY	A	B	C	D	E
LPV DA	918-7/8		250 (300-7/8)		
LNAV/VNAV DA	979-1 1/8		311 (400-1 1/8)		
LNAV MDA	1160-1 492 (500-1)		1160-1 3/8 492 (500-1 3/8)		
<input checked="" type="checkbox"/> CIRCLING	1160-1 482 (500-1)		1520-2 1/2 842 (900-2 1/2)	1520-2 3/4 842 (900-2 3/4)	1520-3 842 (900-3)

SC-1, 16 JUL 2020 to 13 AUG 2020

SC-1, 16 JUL 2020 to 13 AUG 2020