

WAAS CH <b>63131</b> <b>W08A</b>	APP CRS <b>086°</b>	Rwy Idg <b>7376</b> TDZE <b>671</b> Apt Elev <b>678</b>
--	------------------------	---

# RNAV (GPS) RWY 8

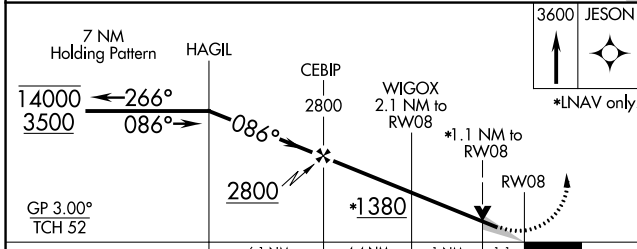
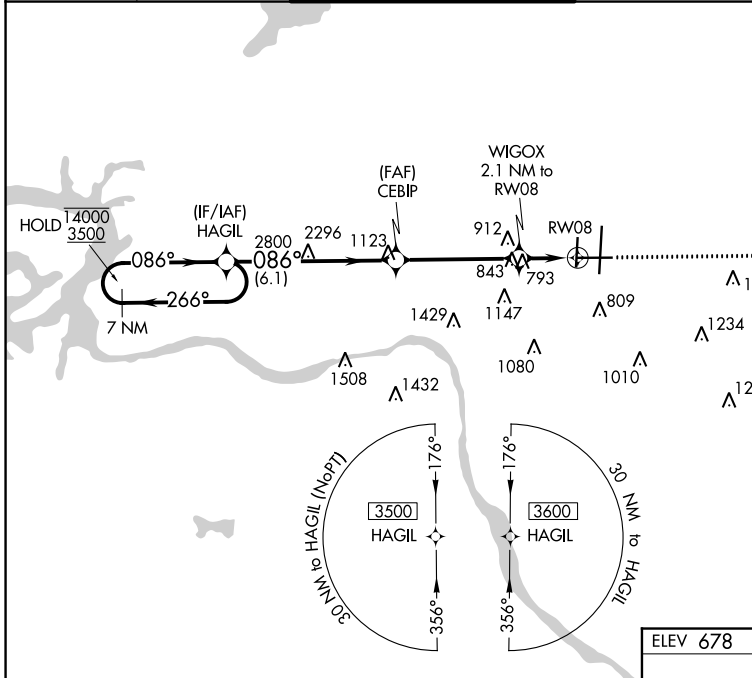
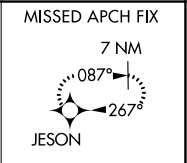
TULSA INTL (TUL)

RNP APCH.

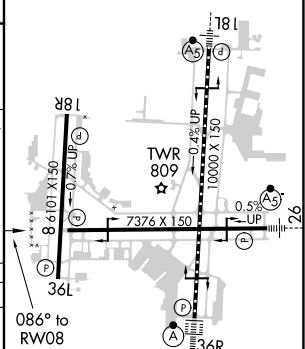
**▼** Circling NA for Cat E south of Rwy 8-26. For uncompensated Baro-VNAV systems, LNAV/VNAV NA below -13°C or ASR above 54°C.

MISSED APPROACH: Climb to 3600 direct JESON and hold.

D-ATIS <b>124.9 377.2</b>	TULSA APP CON <b>124.0 338.3</b>	TULSA TOWER <b>121.2 310.8</b> (Rwys 18L-36R, 8-26) <b>118.7 257.8</b> (Rwy 18R-36L)	GND CON <b>121.9 348.6</b>	CLNC DEL <b>134.05 284.7</b>
------------------------------	-------------------------------------	--	-------------------------------	---------------------------------



ELEV 678 **D** TDZE 671



CATEGORY	A	B	C	D	E
LPV DA		921- <sup>3</sup> / <sub>4</sub>	250 (300- <sup>3</sup> / <sub>4</sub> )		
LNAV/VNAV DA		985-1	314 (400-1)		
LNAV MDA	1060-1	389 (400-1)	1060- <sup>1</sup> / <sub>8</sub>	389 (400- <sup>1</sup> / <sub>8</sub> )	
<b>C</b> CIRCLING	1120-1 442 (500-1)	1160-1 482 (500-1)	1520-2 <sup>1</sup> / <sub>2</sub> 842 (900-2 <sup>1</sup> / <sub>2</sub> )	1520-2 <sup>3</sup> / <sub>4</sub> 842 (900-2 <sup>3</sup> / <sub>4</sub> )	1520-3 842 (900-3)

TDZ/CL Rwy 36R  
HIRL Rwys 8-26, 18L-36R and 18R-36L  
REIL Rwys 8, 18R, 26 and 36L

SC-1, 16 JUL 2020 to 13 AUG 2020

SC-1, 16 JUL 2020 to 13 AUG 2020