

# TULSA EIGHT DEPARTURE

**TOP ALTITUDE:  
15000**

D-ATIS  
124.9 377.2  
TULSA TOWER  
118.7 257.8 (Rwy 18R-36L)  
121.2 310.8 (Rwys 18L-36R, 8-26)  
CLNC DEL  
134.05 284.7  
TULSA DEP CON  
124.0 338.3

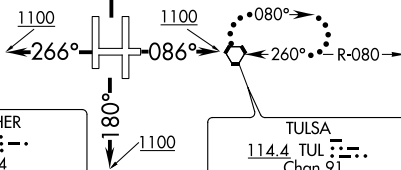
CHANUTE  
109.2 CNU Chan 29  
N37°37.57'-W95°35.61'  
L-10-15, H-5

FARMINGTON  
115.7 FAM Chan 104  
N37°40.41'-W90°14.04'  
L-16, H-5

NEOSHO  
117.3 EOS Chan 120  
N36°50.55'-W94°26.14'  
L-16, H-6

SPRINGFIELD  
116.9 SGF Chan 116  
N37°21.36'-W93°20.04'  
L-16, H-5

BARTLESVILLE  
117.9 BVO Chan 126  
N36°50.06'-W96°01.11'  
L-15, H-6



RAZORBACK  
116.4 RZC Chan 111  
N36°14.79'-W94°07.28'  
L-16, H-6

KINGFISHER  
114.7 KF Chan 94  
N35°48.32'-W98°00.24'  
L-15, H-6

TULSA  
114.4 TUL Chan 91  
N36°11.78'-W95°47.29'  
L-15, H-6

FORT SMITH  
110.4 FSM Chan 41  
N35°23.31'-W94°16.29'  
L-16, H-6

WILL ROGERS  
114.1 IRW Chan 88  
N35°21.52'-W97°36.55'  
L-15, H-6

ARDMORE  
116.7 ADM Chan 114  
N34°12.70'-W97°10.09'  
L-17, H-6

MAVERICK  
113.1 TTT Chan 78  
N32°52.15'-W97°02.43'  
L-17, H-6

**TAKEOFF MINIMUMS**  
Rwys 8, 18L/R, 36L/R: Standard.  
Rwy 26: Standard with minimum  
climb of 225' per NM to 2900.

NOTE: Chart not to scale.

## DEPARTURE ROUTE DESCRIPTION

- TAKEOFF RUNWAYS 18L/R: Climb on heading 180° to 1100, then...
- TAKEOFF RUNWAYS 36L/R: Climb on heading 360° to 1100, then...
- TAKEOFF RUNWAY 8: Climb on heading 086° to 1100, then...
- TAKEOFF RUNWAY 26: Climb on heading 266° to 1100, then...

...continue on assigned heading for RADAR vectors to assigned route, maintain 15000 or assigned lower altitude, expect further clearance to filed altitude 10 minutes after departure.

LOST COMMUNICATIONS: Proceed to and hold east of TUL VORTAC on the 080° radial. Climb to 15000 feet or lower requested altitude, then proceed on course on filed route. Climb to requested altitude when established on course.

SC-1, 16 JUL 2020 to 13 AUG 2020

SC-1, 16 JUL 2020 to 13 AUG 2020