

ILS or LOC RWY 19R

LOC I-CWX 109.9	APCH CRS 188°	Rwy Ildg 19R 12.000 19L 12.007 TDZE 19R 1372 19L 1365 Arpt Elev 1372
---------------------------	-------------------------	---

AL-453 [USAF]

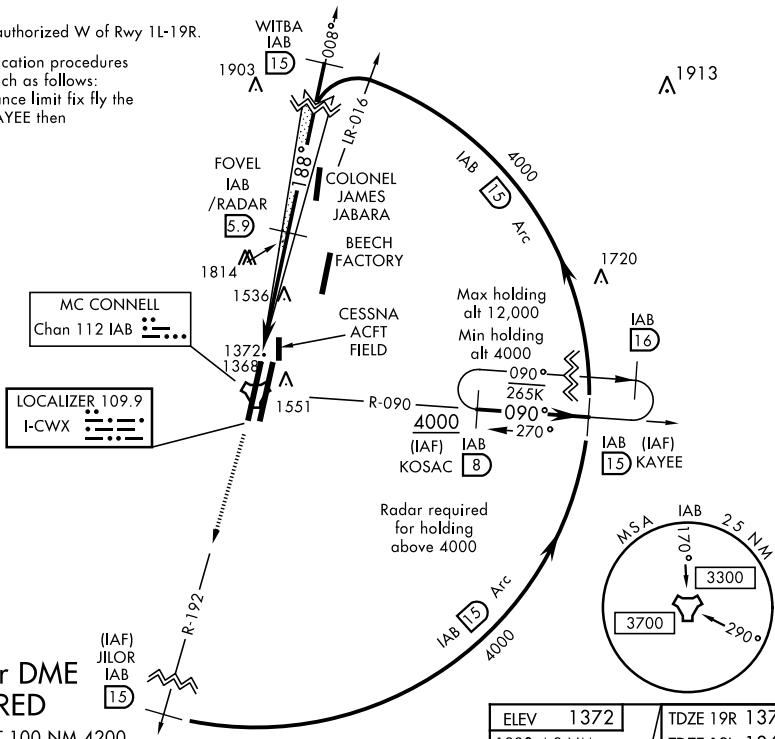
MC CONNELL AFB (KIAB)

<p>▼ * When ALS inop, increase RVR to 40 and vis to 3/4 mile. ** When ALS inop, increase CAT AB RVR to 55 and vis to 1 mile, CAT CDE vis to 1 3/8 miles.</p>	<p>ALSF-1 </p>	<p>MISSED APPROACH: Climb to 4000 via IAB TACAN R-192 to 1.5 DME (JILOR). Expect further clearance from ATC.</p>
--	--------------------	--

D-ATIS 124.65 269.9	WICHITA APP CON 134.8 269.1	MC CONNELL TOWER 127.25 291.775	GND CON 118.0 275.8
-------------------------------	---------------------------------------	---	-------------------------------

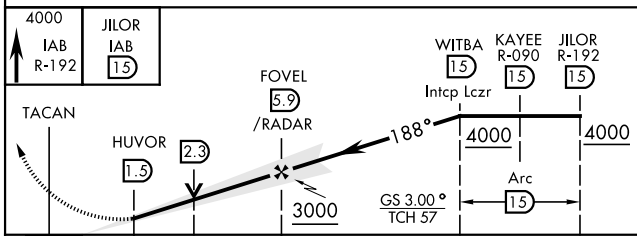
*** Circling not authorized W of Rwy 1L-19R.

ATC lost communication procedures on missed approach as follows:
At 15 DME clearance limit fix fly the 15 DME arc to KAYEE then KOSAC and hold.

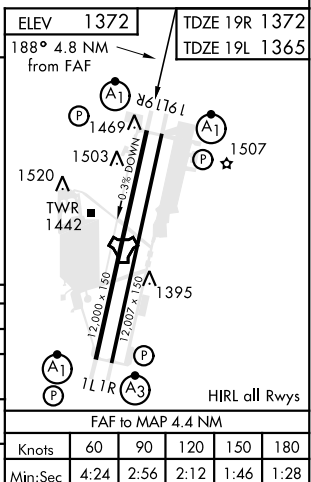


RADAR or DME REQUIRED

EMERG SAFE ALT 100 NM 4200



CATEGORY	A	B	C	D	E
S-ILS 19R *	1572/24		200	(200-1/2)	
S-LOC 19R **	1820/24	448 (500-1/2)	1820/45	448	(500-3/8)
SIDESTEP RWY 19L	1820/55	455 (500-1)	1820-1 3/8	455	(500-1 3/8)
*** CIRCLING	1900-1	529 (600-1)	1900-1 1/2 529 (600-1 1/2)	2400-3	1029 (1100-3)



ILS or LOC RWY 19R

NC-2, 16 JUL 2020 to 13 AUG 2020

NC-2, 16 JUL 2020 to 13 AUG 2020