

WICHITA, KANSAS

ILS or LOC RWY 1L

LOC I-IAB 111.1	APCH CRS 008°	Rwy Idg TDZE Arprt Elev	1L 12,000 1347 1372	1R 12,007 1347 1347
---------------------------	-------------------------	-------------------------------	---	---

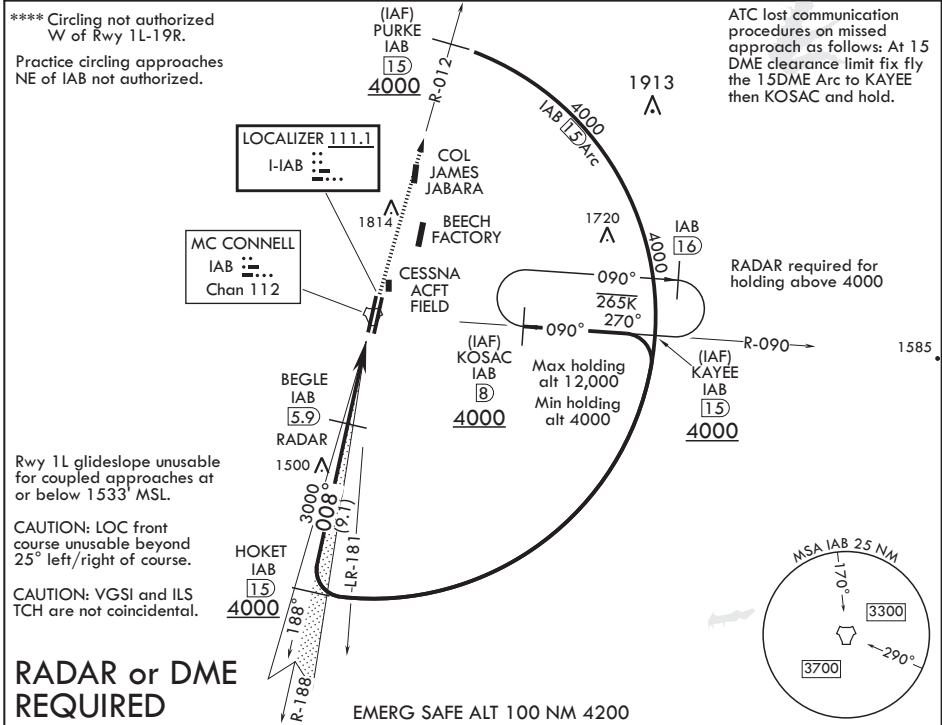
AL-453 (USAF)

MC CONNELL AFB (KIAB)

▽ * When ALS inop, increase RVR to 40 and vis to 3/4 mile.
 ** When ALS inop, increase RVR to 55 and vis to 1 mile.
 *** When ALS inop, increase CAT AB RVR to 55 and vis to 1 mile, CAT CDE RVR to 60 and vis to 1 1/8.

MISSED APPROACH: Climb to 4000 via IAB TACAN R-012 to 15 DME (PURKE). Expect further clearance from ATC.

D ATIS 124.65 269.9	WICHITA APP CON 134.8 269.1	TOWER 127.25 291.775	GND CON 118.0 275.8
-------------------------------	---------------------------------------	--------------------------------	-------------------------------



FAF to MAP 4.5 NM					
Knots	60	90	120	150	180
Min:Sec	4:30	3:00	2:15	1:48	1:30

WICHITA, KANSAS
Amdt 4 16JUL20

37°37'N - 97°16'W

MC CONNELL AFB (KIAB)

ILS or LOC RWY 1L

NC-2, 16 JUL 2020 to 13 AUG 2020

NC-2, 16 JUL 2020 to 13 AUG 2020