

WICHITA, KANSAS

RNAV (GPS) RWY 1L

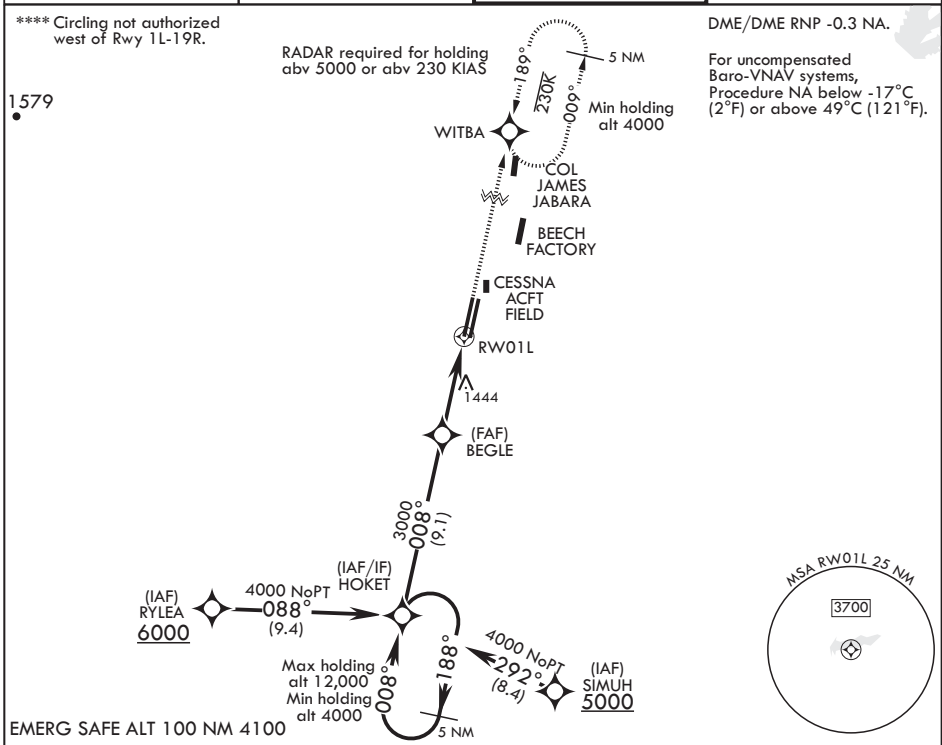
WAAS CH 71272 W01A	APCH CRS 008°	Rwy ldg TDZE Arprt Elev	12,000 1347 1372
--------------------------	------------------	-------------------------------	------------------------

AL-453 (USAF)

MC CONNELL AFB (KIAB)

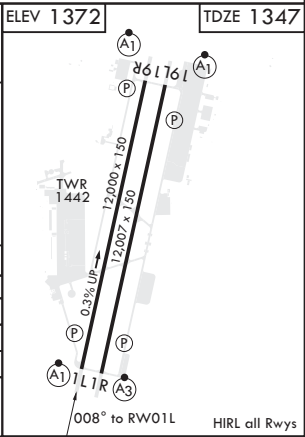
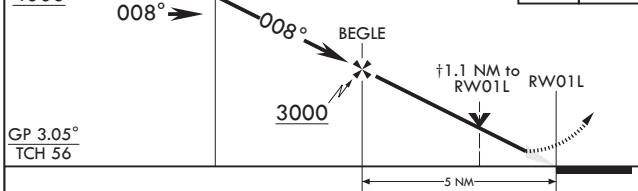
<p>⚠ * When ALS inop, increase CAT ABCDE RVR to 40, vis to 3/4 mile. ** When ALS inop, increase CAT ABCDE vis to 1 1/4 miles. *** When ALS inop, increase CAT AB RVR to 55, vis to 1 mile; CAT CDE RVR to 60, vis to 1 1/8 miles.</p>	<p>ALSF-1</p>	<p>MISSED APPROACH: Climb to 4000 direct WITBA and hold.</p>
--	---------------	--

D ATIS 124.65 269.9	WICHITA APP CON 134.8 269.1	TOWER 127.25 291.775	GND CON 118.0 275.8
------------------------	--------------------------------	-------------------------	------------------------



EMERG SAFE ALT 100 NM 4100

4000	↑	WITBA	ELEV 1372	TDZE 1347
------	---	-------	-----------	-----------



CATEGORY	A	B	C	D	E
LPV DA*	1547/24		200	(200-1/2)	
LNAV/VNAV DA**	1732/40		385	(400-7/8)	
LNAV MDA***	1740/24	393 (400-1/2)	1740/35	393	(400-5/8)
C CIRCLING****	1900-1 529 (600-1)		1900-1 1/2 529 (600-1/2)	2400-3 1029 (1100-3)	

WICHITA, KANSAS
Amdt 2 07DEC17

37°37'N - 97°16'W

MC CONNELL AFB (KIAB)

RNAV (GPS) RWY 1L

NC-2, 16 JUL 2020 to 13 AUG 2020

NC-2, 16 JUL 2020 to 13 AUG 2020