

TACAN RWY 19R

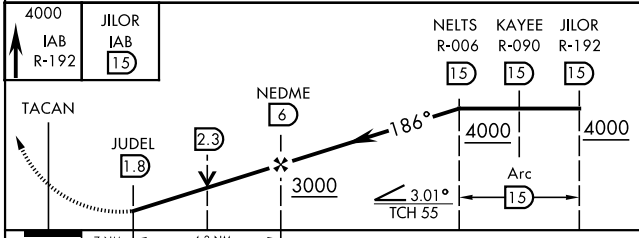
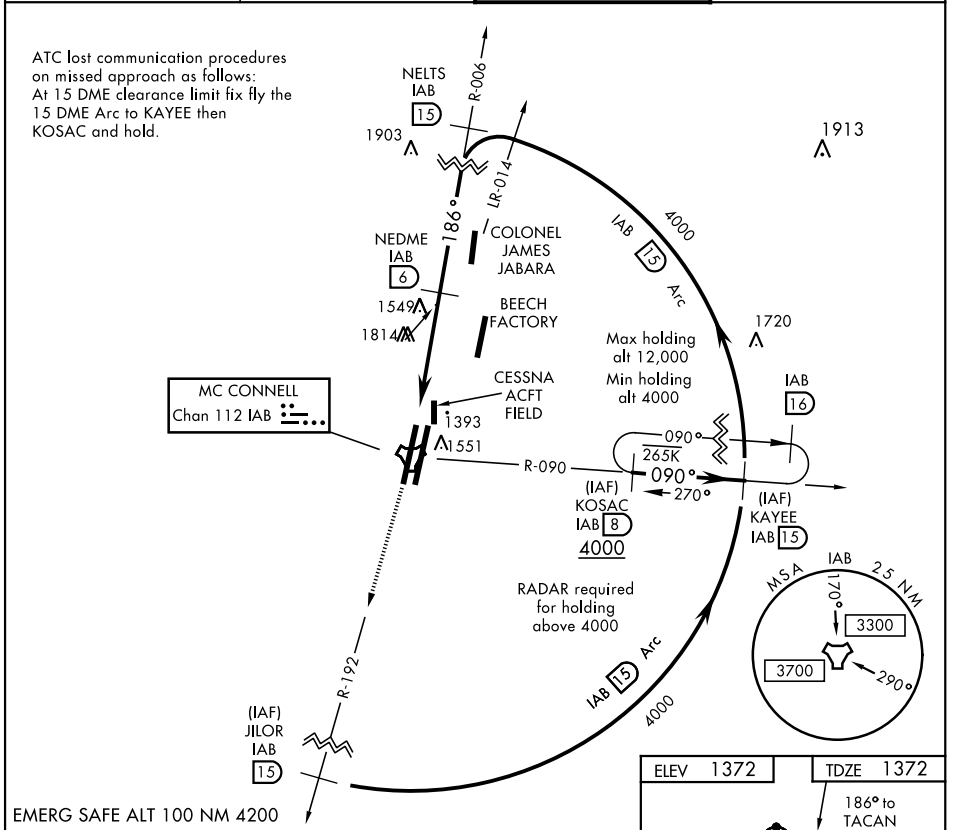
TACAN IAB Chan 112	APCH CRS 186°	Rwy Idg 12,000 TDZE 1372 Arprt Elev 1372	AL-453 [USAF]	MC CONNELL AFB (KIAB)
-----------------------	------------------	--	---------------	-----------------------

▼ * When ALS inop, increase CAT AB RVR to 55 and vis to 1 mile, CAT CDE vis to 1 3/8 miles.
 ** Circling not authorized W of Rwy 1L-19R.

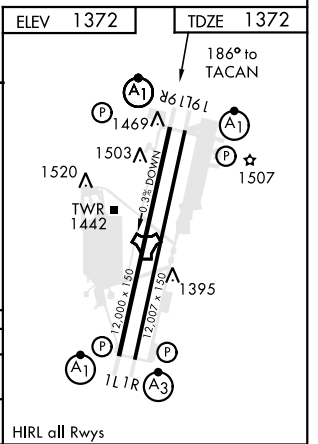
ALSF-1
A1


MISSED APPROACH: Climb to 4000 via IAB TACAN R-192 to 15 DME (JILOR). Expect further clearance from ATC.

D-ATIS 124.65 269.9	WICHITA APP CON 134.8 269.1	MC CONNELL TOWER 127.25 291.775	GND CON 118.0 275.8
------------------------	--------------------------------	------------------------------------	------------------------



CATEGORY	A	B	C	D	E
S-19R*	1820/24 448 (500-1/2)		1820/45 448 (500-7/8)		
C CIRCLING**	1900-1 529 (600-1)		1900-1 1/2 529 (600-1 1/2)	2400-3 1029 (1100-3)	



TACAN RWY 19R

NC-2, 16 JUL 2020 to 13 AUG 2020

NC-2, 16 JUL 2020 to 13 AUG 2020