

WICHITA, KANSAS

# TACAN RWY 1R

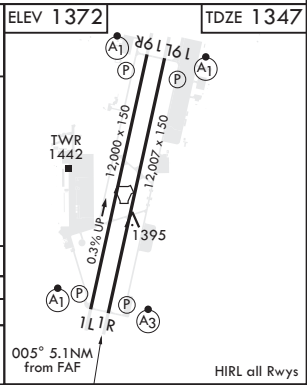
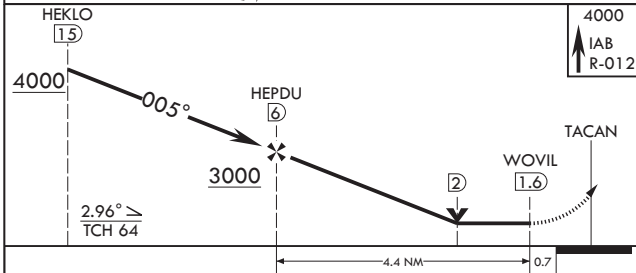
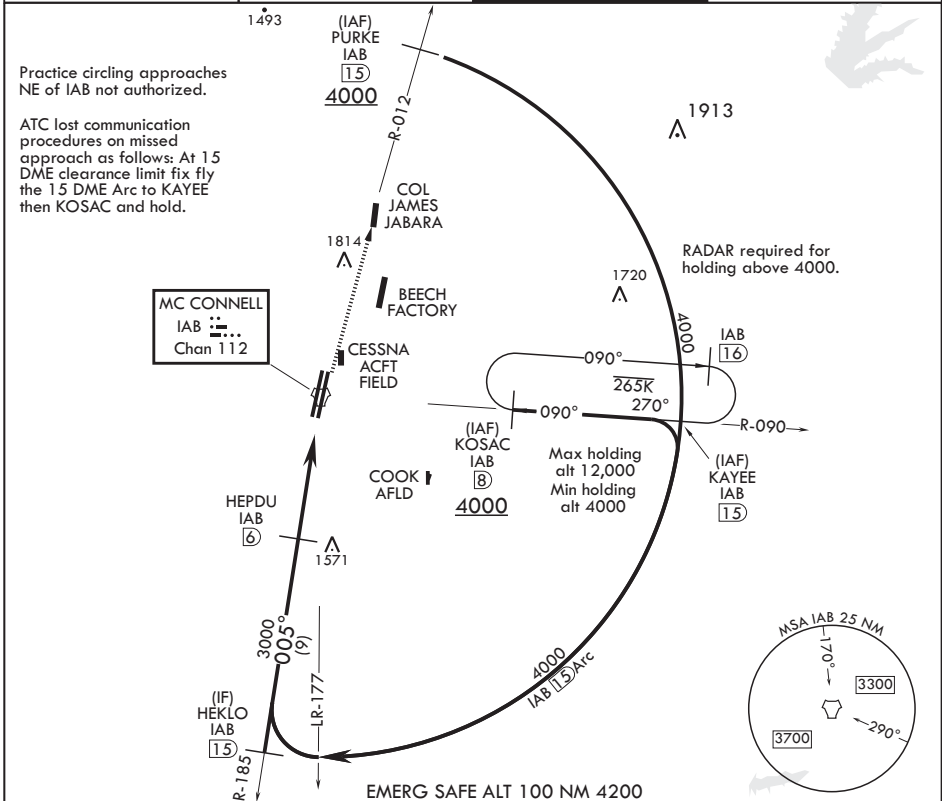
TACAN IAB Chan 112	APCH CRS 005°	Rwy Idg TDZE Arpt Elev	12,007 1347 1372
-----------------------	------------------	------------------------------	------------------------

AL-453 (USAF)

MC CONNELL AFB (KIAB)

**SSALR** MISSED APPROACH: Climb to 4000 via IAB TACAN R-012 to PURKE. Expect further clearance from ATC.  
 \* When ALS inop, increase CAT AB RVR to 55 and vis to 1 mile, CAT CDE vis to 1 1/4 miles.  
 \*\* Circling not authorized W of Rwy 1L-19R.

D ATIS 124.65 269.9	WICHITA APP CON 134.8 269.1	TOWER 127.25 291.775	GND CON 118.0 275.8
------------------------	--------------------------------	-------------------------	------------------------



CATEGORY	A	B	C	D	E
S-1R*	1760/40		413	(400-3/4)	
<b>C</b> CIRCLING**	1900-1 529 (600-1)		1900-1 1/2 529 (600-1 1/2)	2400-3 1029 (1100-3)	

WICHITA, KANSAS  
Amdt 5 16JUL20

37°37'N - 97°16'W

# MC CONNELL AFB (KIAB) TACAN RWY 1R

NC-2, 16 JUL 2020 to 13 AUG 2020

NC-2, 16 JUL 2020 to 13 AUG 2020