


LOC I-INT 110.3	APP CRS 332°	Rwy Idg 6655
		TDZE 941
		Apt Elev 969

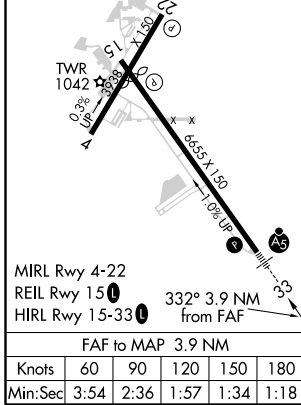
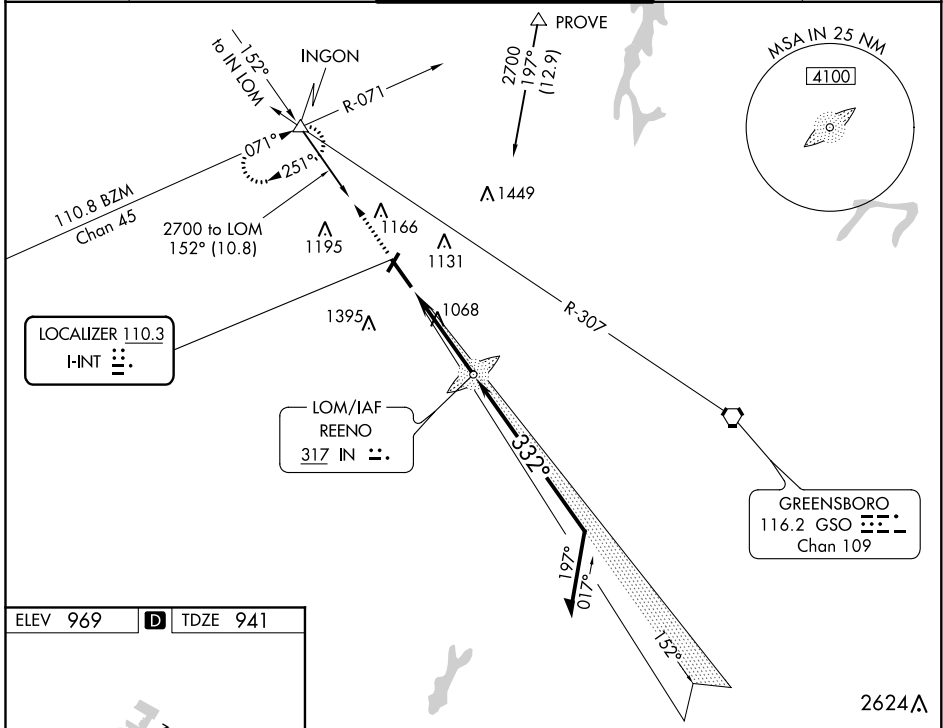
ILS or LOC RWY 33

SMITH REYNOLDS (INT)

⚠ For inoperative MALSR, when using Piedmont Triad Intl altimeter setting, increase S-ILS 33 visibility to RVR 5000 all Cats. When local altimeter setting not received, use Piedmont Triad Intl altimeter setting and increase all DA 39 feet and all MDA 40 feet; increase S-LOC 33 Cat C visibility to RVR 4000 and Circling Cat D ¼ mile. ADF Required. Circling Rwy 4, 22 NA at night.

MALSR  **MISSED APPROACH:** Climb to 3500 via 332° bearing from REENO LOM to INGON INT and hold, continue climb-in-hold to 3500.

ATIS 121.3	GREENSBORO APP CON 124.35 269.225	WINSTON-SALEM TOWER ★ 123.75 (CTAF) 0 257.8	GND CON 128.25	UNICOM 122.95
----------------------	---	---	--------------------------	-------------------------



3500	INGON	IN LOM	2212	152°	2600	Remain within 10 NM
IN 332°	△	2500	332°	3.9 NM	GS 3.00°	TCH 57
CATEGORY	A	B	C	D		
S-ILS 33		1141/24	200 (200-½)			
S-LOC 33		1320/24	379 (400-½)		NA	
CIRCLING	1480-1 511 (600-1)	1580-1 611 (700-1)	1580-1¾ 611 (700-1¾)		NA	

SE-2, 16 JUL 2020 to 13 AUG 2020

SE-2, 16 JUL 2020 to 13 AUG 2020