

APP CRS **152°**
 Rwy Idg **6069**
 TDZE **968**
 Apt Elev **969**

RNAV (GPS) RWY 15

SMITH REYNOLDS (INT)

RNP APCH.

⚠ When local altimeter setting not received, use Piedmont Triad Intl altimeter setting and increase all MDA 40 feet and Circling Cat D visibility ¼ mile. Circling Rwy 4, 22 NA at night. Rwy 15 helicopter visibility reduction below ¾ SM NA.

MISSED APPROACH:
 Climb to 3000 direct COLEB and on track 102° to GSO VORTAC and hold.

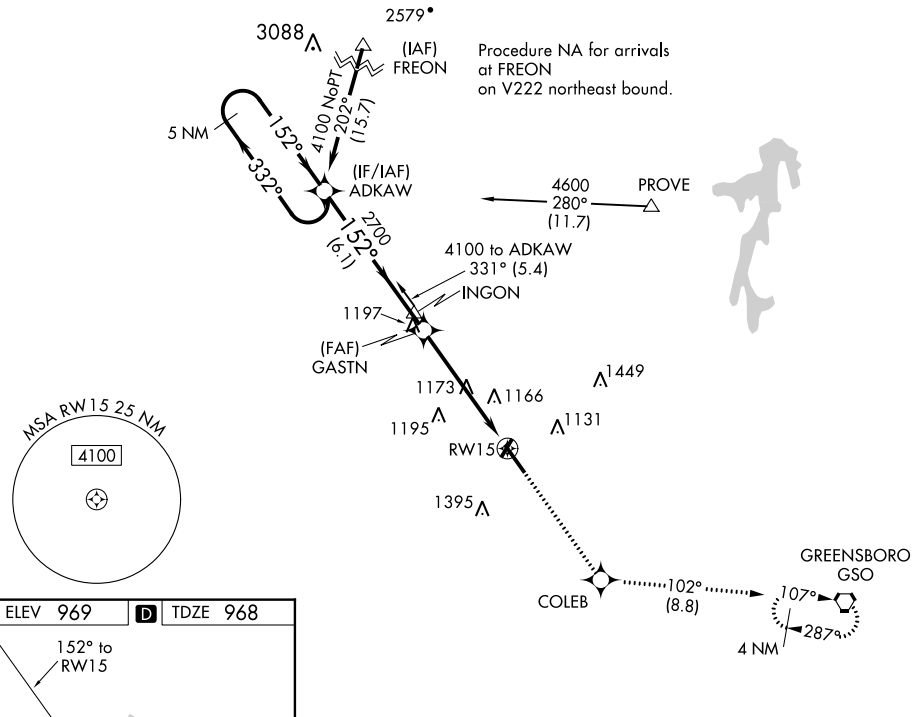
ATIS
121.3

GREENSBORO APP CON
124.35 269.225

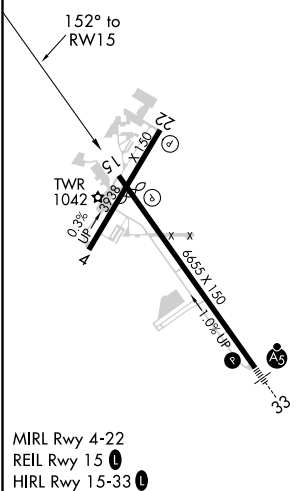
WINSTON-SALEM TOWER ★
123.75 (CTAF) 0 257.8

GND CON
128.25

UNICOM
122.95

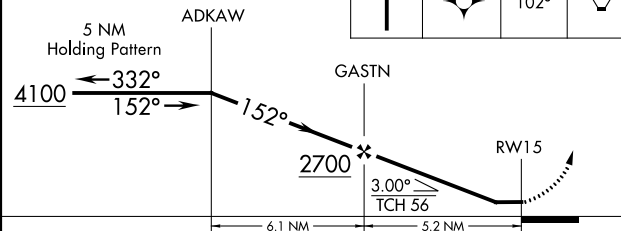


ELEV 969 **D** TDZE 968



VGSI and descent angles not coincident (VGSI Angle 3.00/TCH 38).

3000	COLEB	tr 102°	GSO
------	-------	---------	-----



CATEGORY	A	B	C	D
LNAV MDA	1440-1	472 (500-1)	1440-1 ³ / ₈	472 (500-1 ³ / ₈)
CIRCLING	1480-1 511 (600-1)	1580-1 611 (700-1)	1580-1 ³ / ₄ 611 (700-1 ³ / ₄)	1740-2 ¹ / ₂ 771 (800-2 ¹ / ₂)