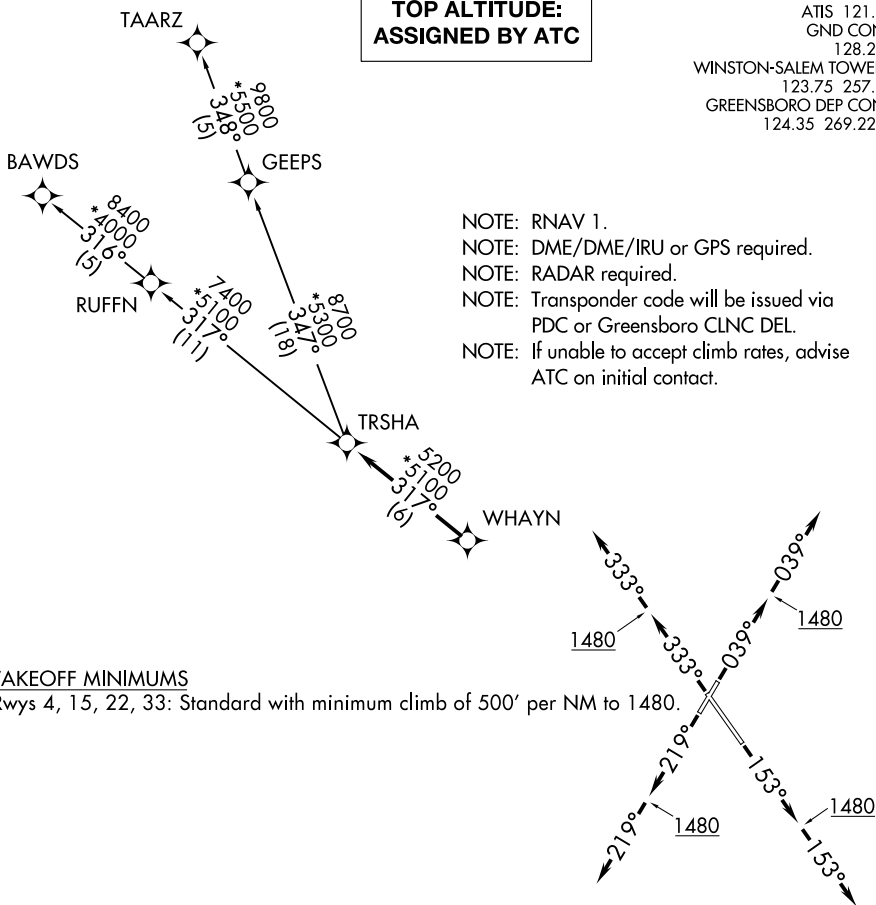


TRSHA ONE DEPARTURE (RNAV)

**TOP ALTITUDE:
ASSIGNED BY ATC**

ATIS 121.3
GND CON 128.25
WINSTON-SALEM TOWER ★ 123.75 257.8
GREENSBORO DEP CON 124.35 269.225



- NOTE: RNAV 1.
- NOTE: DME/DME/IRU or GPS required.
- NOTE: RADAR required.
- NOTE: Transponder code will be issued via PDC or Greensboro CLNC DEL.
- NOTE: If unable to accept climb rates, advise ATC on initial contact.

TAKEOFF MINIMUMS

Rwys 4, 15, 22, 33: Standard with minimum climb of 500' per NM to 1480.

NOTE: Chart not to scale.

DEPARTURE ROUTE DESCRIPTION

- TAKEOFF RWY 4: Climb heading 039° to 1480, then on heading 039°. Thence. . . .
- TAKEOFF RWY 15: Climb heading 153° to 1480, then on heading 153°. Thence. . . .
- TAKEOFF RWY 22: Climb heading 219° to 1480, then on heading 219°. Thence. . . .
- TAKEOFF RWY 33: Climb heading 333° to 1480, then on heading 333°. Thence. . . .

. . . . expect RADAR vectors to WHAYN, then on track 317° to TRSHA, then on assigned transition. Maintain altitude assigned by ATC. Expect clearance to filed altitude within ten (10) minutes after departure.

BAWDS TRANSITION (TRSHA1.BAWDS)

TAARZ TRANSITION (TRSHA1.TAARZ)

TRSHA ONE DEPARTURE (RNAV)

SE-2, 16 JUL 2020 to 13 AUG 2020

SE-2, 16 JUL 2020 to 13 AUG 2020