

VORTAC GSO	APP CRS	Rwy Idg	6069
116.2	118°	TDZE	968
Chan 109		Apt Elev	970

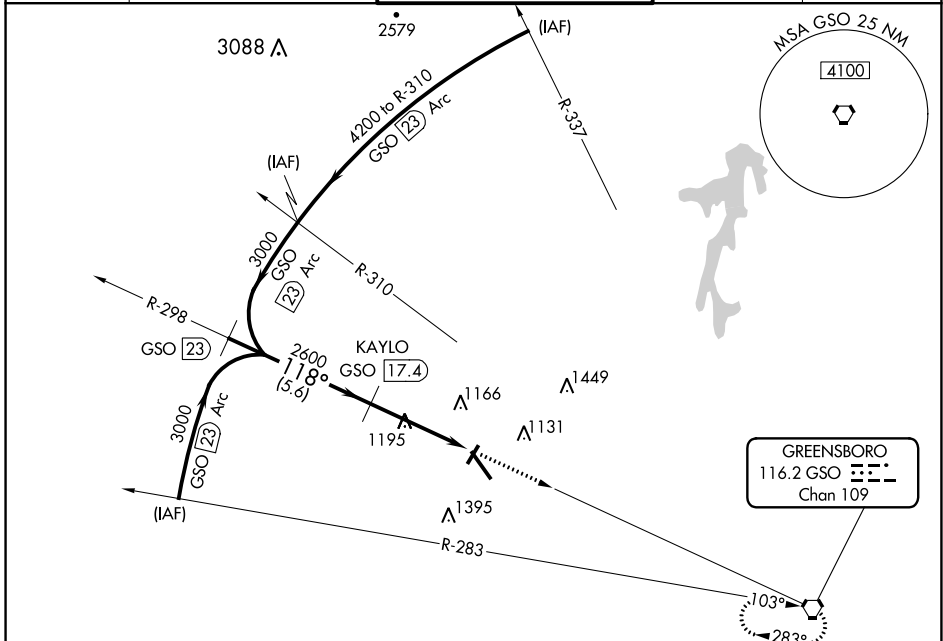
VOR RWY 15

SMITH REYNOLDS (INT)

▼ Circling Rwy 4, 22 NA at night.
▲ Rwy 15 helicopter visibility reduction below $\frac{3}{4}$ SM NA. DME required.

MISSED APPROACH: Climb to 3000 direct GSO VORTAC and hold.

ATIS	GREENSBORO APP CON	WINSTON-SALEM TOWER ★	GND CON	UNICOM
121.3	124.35 269.225	123.75 (CTAF) 257.8	128.25	122.95



DME REQUIRED

	ELEV 970	TDZE 968														
<table border="1" style="width: 100%; border-collapse: collapse;"> <tr> <td style="width: 25%;">CATEGORY</td> <td style="width: 25%;">A</td> <td style="width: 25%;">B</td> <td style="width: 25%;">C</td> <td style="width: 25%;">D</td> </tr> <tr> <td>S-15</td> <td>1500-1</td> <td>532 (600-1)</td> <td>1500-1½ 532 (600-1½)</td> <td>1500-1¾ 532 (600-1¾)</td> </tr> <tr> <td>CIRCLING</td> <td>1500-1 530 (600-1)</td> <td>1580-1 610 (700-1)</td> <td>1580-1¾ 610 (700-1¾)</td> <td>1740-2½ 770 (800-2½)</td> </tr> </table>	CATEGORY	A	B	C	D	S-15	1500-1	532 (600-1)	1500-1½ 532 (600-1½)	1500-1¾ 532 (600-1¾)	CIRCLING	1500-1 530 (600-1)	1580-1 610 (700-1)	1580-1¾ 610 (700-1¾)	1740-2½ 770 (800-2½)	<p>MIRL Rwy 4-22</p> <p>REIL Rwy 15</p> <p>HIRL Rwy 15-33</p>
CATEGORY	A	B	C	D												
S-15	1500-1	532 (600-1)	1500-1½ 532 (600-1½)	1500-1¾ 532 (600-1¾)												
CIRCLING	1500-1 530 (600-1)	1580-1 610 (700-1)	1580-1¾ 610 (700-1¾)	1740-2½ 770 (800-2½)												

SE-2, 16 JUL 2020 to 13 AUG 2020

SE-2, 16 JUL 2020 to 13 AUG 2020